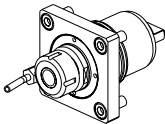
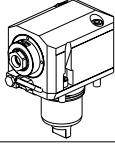

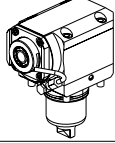
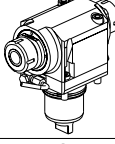
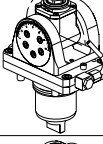
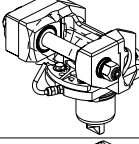
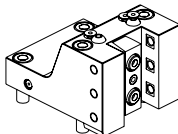
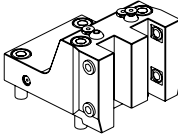
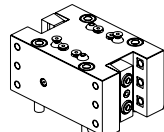
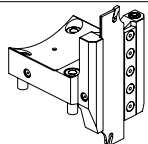
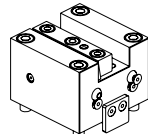
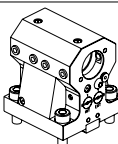
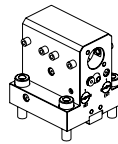
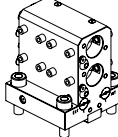
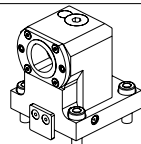
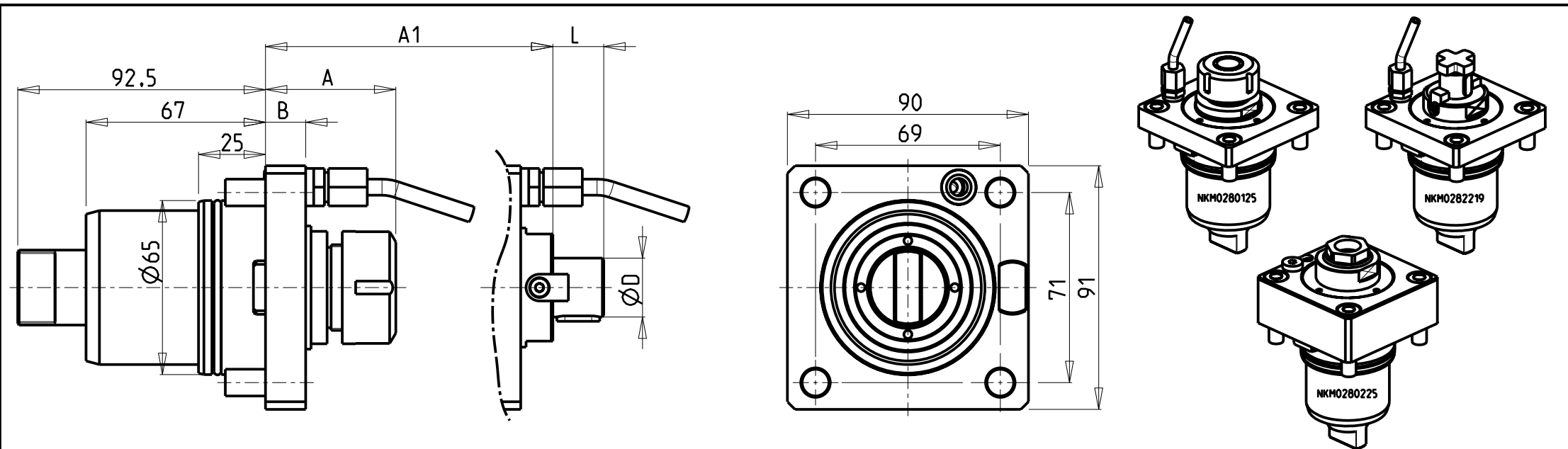


		PAGINA Page Seite
MODULO MOTORIZZATO RADIALE Radial driven tool Radial angetriebenes Werkzeug		CCM010.1.00 NEW
MODULO MOTORIZZATO RADIALE RIDOTTO I=2:1 DISASSATO IN Z 68mm Radial geared-down I=2:1 driven tool re-directed in Z by 68mm Radial angetriebenes Werkzeug untersetzt I=2:1 achsversetzt in Z um 68mm		CCM030.1.20 NEW
MODULO MOTORIZZ. RADIALE MOLTIPLICATO I=1:2 DISASSATO IN Z 68mm Radial geared-up I=1:2 driven tool re-directed in Z by 68mm Radial angetriebenes Werkzeug uebersetzt I=1:2 achsversetzt in Z um 68mm		CCM033.1.30 NEW
MODULO MOTORIZZATO ASSIALE H=55mm Axial driven tool H=55mm Axial angetriebenes Werkzeug H=55mm		CCM150.1.10 NEW
MODULO MOTORIZZATO ASSIALE H=65mm Axial driven tool H=65mm Axial angetriebenes Werkzeug H=65mm		CCM150.1.20 NEW
MODULO MOTORIZZATO ASSIALE H=65mm Axial driven tool H=65mm Axial angetriebenes Werkzeug H=65mm		CCM150.1.21 NEW
MODULO MOTORIZZATO ASSIALE MOLTIPLICATO I=1:2 Axial geared-up I=1:2 driven tool Axial angetriebenes Werkzeug uebersetzt I=1:2		CCM200.1.10 NEW
MODULO MOTORIZZATO ASSIALE BISPORGENTE H=65mm Axial opposite face twin driven tool H=65mm Axial angetriebenes Werkzeug halb vorspringend H=65mm		CCM240.1.10 NEW
MODULO MOTORIZZATO ORIENTABILE ±90° ±90° adjustable angle driven tool Angetriebenes Werkzeug schwenkbar ±90°		CCM335.1.00 NEW
MODULO MOTORIZZATO ORIENTABILE +/-90° MOLTIPLICATO I=1:2 +/-90° adjustable angle driven tool geared-up I=1:2 Angetriebenes Werkzeug schwenkbar +/-90° uebersetzt I=1:2		CCM336.1.00 NEW
MODULO MOTORIZZATO PORTACREATORE Driven gear hobber Angetriebenes Zahnradwaelzfraes-Werkzeug		CCM340.1.00 NEW
MODULO MOTORIZZATO STOZZATORE Slotting driven tool Keilnutenstossmaschine		CCM360.1.00 NEW

		PAGINA Page Seite
PORTAUTENSILE RADIALE SINGOLO Radial single static tool Radial Single-Werkzeughalter		CCM423.1.00 NEW
PORTAUTENSILE RADIALE SOVRAPPOSTO Radial single side twin static tool Radial Werkzeughalter ueberlagert		CCM440.1.00 NEW
PORTAUTENSILE RADIALE DOPPIO Radial double static tool Radial Doppel-Werkzeughalter		CCM453.1.00 NEW
PORTAUTENSILE RADIALE PER LAMA Radial blade holder Radial Abstechhalter		CCM510.1.00 NEW
PORTAUTENSILE ASSIALE SINGOLO Axial single static tool Axial Single-Werkzeughalter		CCM552.1.00 NEW
PORTAUTENSILE ASSIALE PER BARENO $\varnothing 32\text{mm} / \varnothing 40\text{mm}$ H=75mm Axial single boring bar holder $\varnothing 32\text{mm} / \varnothing 40\text{mm}$ H=75mm Axial Bohrhalter $\varnothing 32\text{mm} / \varnothing 40\text{mm}$ H=75mm		CCM650.1.10 NEW
PORTAUTENSILE ASSIALE PER BARENO $\varnothing 25\text{mm} / \varnothing 1"$ H=75mm Axial single boring bar holder $\varnothing 25\text{mm} / \varnothing 1"$ H=75mm Axial Bohrhalter $\varnothing 25\text{mm} / \varnothing 1"$ H=75mm		CCM670.1.10 NEW
PORTAUTENSILE ASSIALE PER BARENO 2 POSIZIONI $\varnothing 25\text{mm} / \varnothing 1"$ Axial double boring bar holder $\varnothing 25\text{mm} / \varnothing 1"$ Axial Bohrhalter 2 Positionen $\varnothing 25\text{mm} / \varnothing 1"$		CCM864.1.00 NEW

PORTAUTENSILE ASSIALE SINGOLO COROMANT CAPTO® Axial single static tool COROMANT CAPTO® Axial Single-Werkzeughalter COROMANT CAPTO®		CCM550.A.40 NEW
---	---	--------------------



Cod. MT	Mandrino Spindle Spindel	I	RPM	Coppia Max Max Torque Max Drehmoment	Lubrificazione int. Coolant through Innenkuehlung	Lubrificazione est. Ext. coolant Aussenkuehlung	A	A1	B	D	L	CHIAVI NON INCLUSE Keys not included Schluessel nicht einbegriffen		
NKM0280125	ER25	1:1	6000	70Nm		X	48.66	-	15	-	-	CHUB42	CHSTER25	NEW
NKM0280132	ER32	1:1	6000	70Nm		X	52.16	-	15	-	-	CHUB40	CHSTER32	NEW
NKM0280332	ER32	1:1	6000	70Nm	P=30bar	X	71.66	-	35	-	-	CHUB40	CHSTER32	NEW
NKM0280225	ER A 25	1:1	6000	70Nm	P=30bar	X	59.03	-	35	-	-	CHUB40	CHUB27	NEW
NKM0280232	ER A 32	1:1	6000	70Nm	P=30bar	X	67.53	-	35	-	-	CHUB46	CHUB32	NEW
NKM0281617	Ø16x17	1:1	6000	70Nm		X	-	25	15	16	17	CHUB42	CH_VTCROCE_M08	NEW
NKM0282219	Ø22x19	1:1	6000	70Nm		X	-	27	15	22	19	CHUB40	CH_VTCROCE_M10	NEW
NKM0282721	Ø27x21	1:1	6000	70Nm		X	-	28	15	27	21	CHUB40	CH_VTCROCE_M12	NEW
NKM0281919	Ø3/4"x3/4"	1:1	6000	70Nm		X	-	25	15	3/4"	3/4"	CHUB42	CH_VTCROCE_M08	NEW
NKM0282519	Ø1"x19	1:1	6000	70Nm		X	-	29	15	1"	19	CHUB40	CH_VTCROCE_M12	NEW

- Chiave inclusa
- Key included
- Schluessel inbegriffen

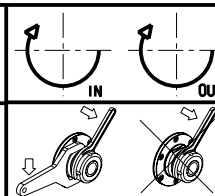
CHIAH CHYUN

MOD: CT2-52 / CT2-52YM / CT2-52Y2M(S) / CT3-52Y2M / CT2-65 / CT2-65YM / CT2-65Y2M(S) / CT3-65Y2M

MODULO MOTORIZZATO RADIALE

Radial driven tool

Radial angetriebenes Werkzeug



M.T. srl

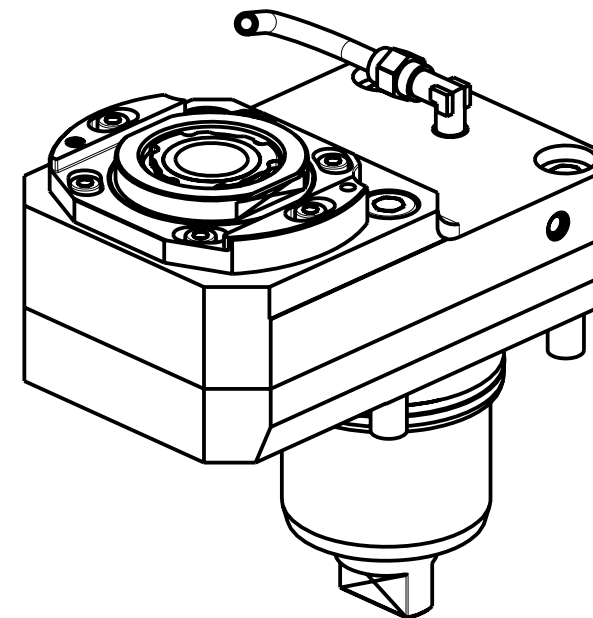
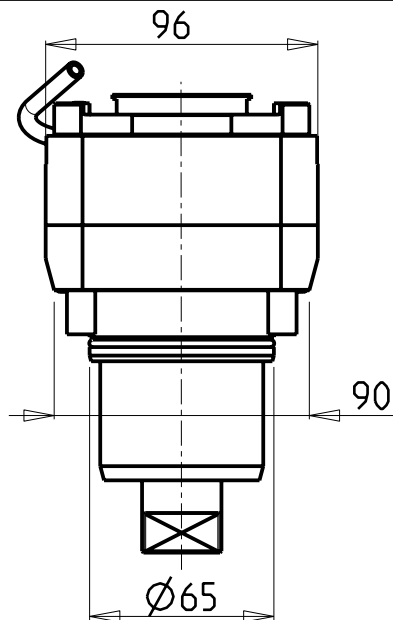
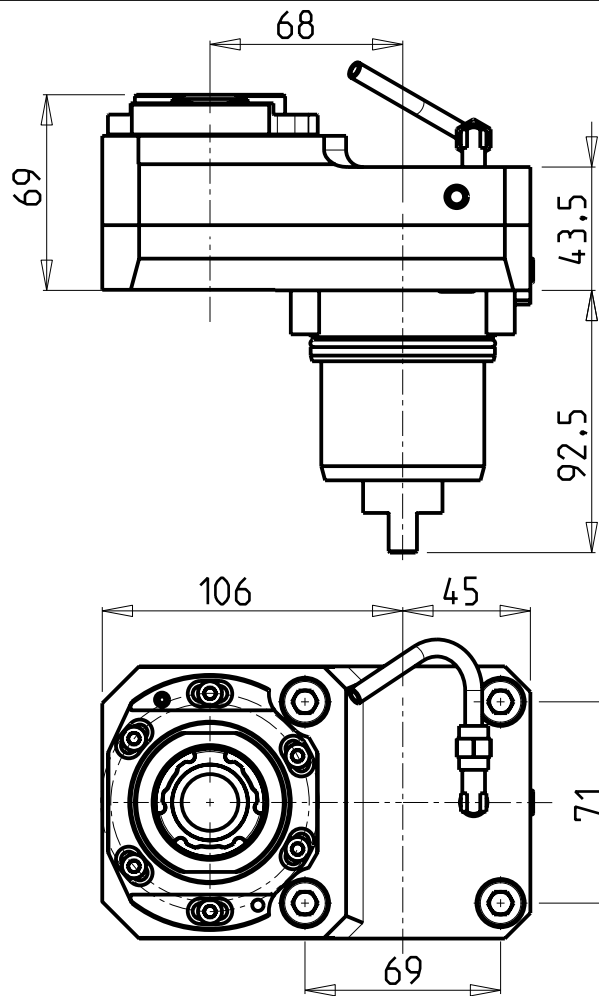
Via Casino Albini 480
Tel. 0541/956034-957884
Fax 0541/956341

47842 S. GIOVANNI IN M. (RN)
e-mail: mtma@mtmarchetti.com
http://www.mtmarchetti.com

PRODUZIONE MODULI ROTANTI



PAGINA CCM010-1-00



Cod. MT	Mandrino Spindle Spindel	I	RPM	Coppia Max Max Torque Max Drehmoment	Reversibile lato mandrino/contromandrino Reversible sub/main spindle side Umkehrbare Spindel-seite/ Gegenspindel-seite	Lubr.esterna Ext. coolant Aussenkuehlung	CHIAVI NON INCLUSE Keys not included Schluessel nicht einbegriffen		
NKM0752132	ERA32	2:1	3000	70Nm	X	X	CHUB30	CHTAER32ZC	OKU0650004

- Chiave inclusa
- Key included
- Schluessel inbegriffen

NEW

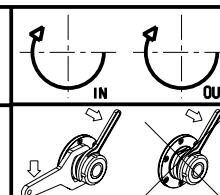
CHIAH CHYUN

MOD: CT2-52 / CT2-52YM / CT2-52Y2M(S) / CT3-52Y2M / CT2-65 / CT2-65YM / CT2-65Y2M(S) / CT3-65Y2M

MODULO MOTORIZZATO RADIALE RIDOTTO I=2:1 DISASSATO IN Z 68mm

Radial geared-down I=2:1 driven tool re-directed in Z by 68mm

Radial angetriebenes Werkzeug untersetzt I=2:1 achsversetzt in Z um 68mm



M.T. srl

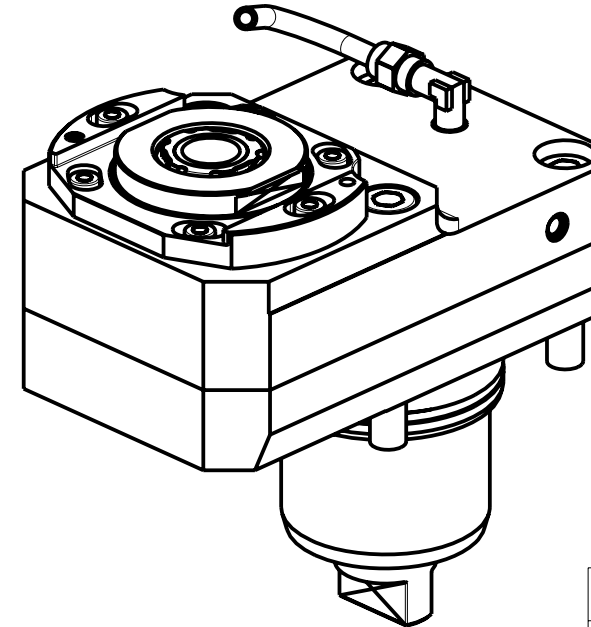
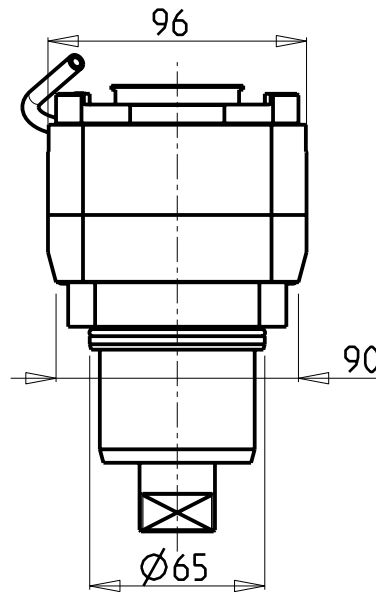
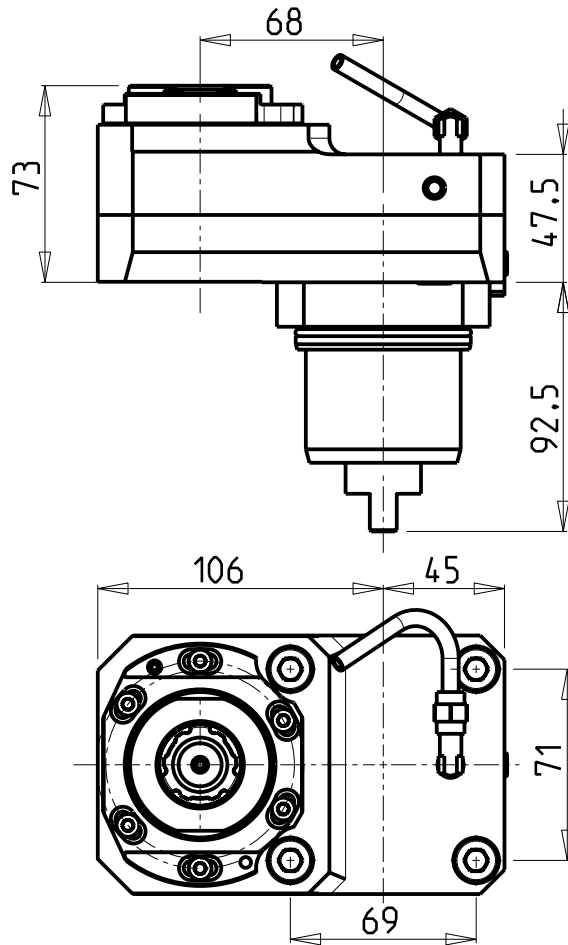
Via Casino Albini 480
Tel. 0541/956034-957884
Fax 0541/956341

47842 S. GIOVANNI IN M. (RN)
e-mail: mtma@mtmarchetti.com
http://www.mtmarchetti.com

PRODUZIONE MODULI ROTANTI



PAGINA CCM030-1-20



- Chiave inclusa
- Key included
- Schluessel inbegriffen

Cod. MT	Mandrino Spindle Spindel	i	RPM MAX	Coppia Max Max Torque Max Drehmoment	Reversibile lato mandrino/contromandrino Reversible sub/main spindle side Umkehrbare Spindel-seite/ Gegenspindel-seite	Lubr. interna Coolant through Innenkuehlung	Lubrificazione est. Ext. coolant Aussenkuehlung	CHIAVI NON INCLUSE Keys not included Schluessel nicht einbegriffen			
								CHUB27	CHTAER25ZC	OKU0650004	
NKM0852132	ER A 25	1:2	12000	30Nm	X	-	X	CHUB27	CHTAER25ZC	OKU0650004	NEW
NKM0854225	ER A 25	1:2	12000	30Nm	X	P=70bar	X	CHUB27	CHTAER25ZC	OKU0650004	NEW

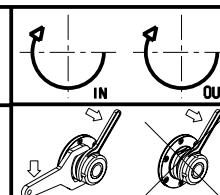
CHIAH CHYUN

MOD: CT2-52 / CT2-52YM / CT2-52Y2M(S) / CT3-52Y2M / CT2-65 / CT2-65YM / CT2-65Y2M(S) / CT3-65Y2M

MODULO MOTORIZZATO RADIALE MOLTIPLICATO I=1:2 DISASSATO IN Z 68mm

Radial geared-up I=1:2 driven tool re-directed in Z by 68mm

Radial angetriebenes Werkzeug uebersetzt I=1:2 achsversetzt in Z um 68mm



M.T. srl

Via Casio Albini 480
Tel. 0541/956034-957884

Fax 0541/956341

47842 S. GIOVANNI IN M. (RN)

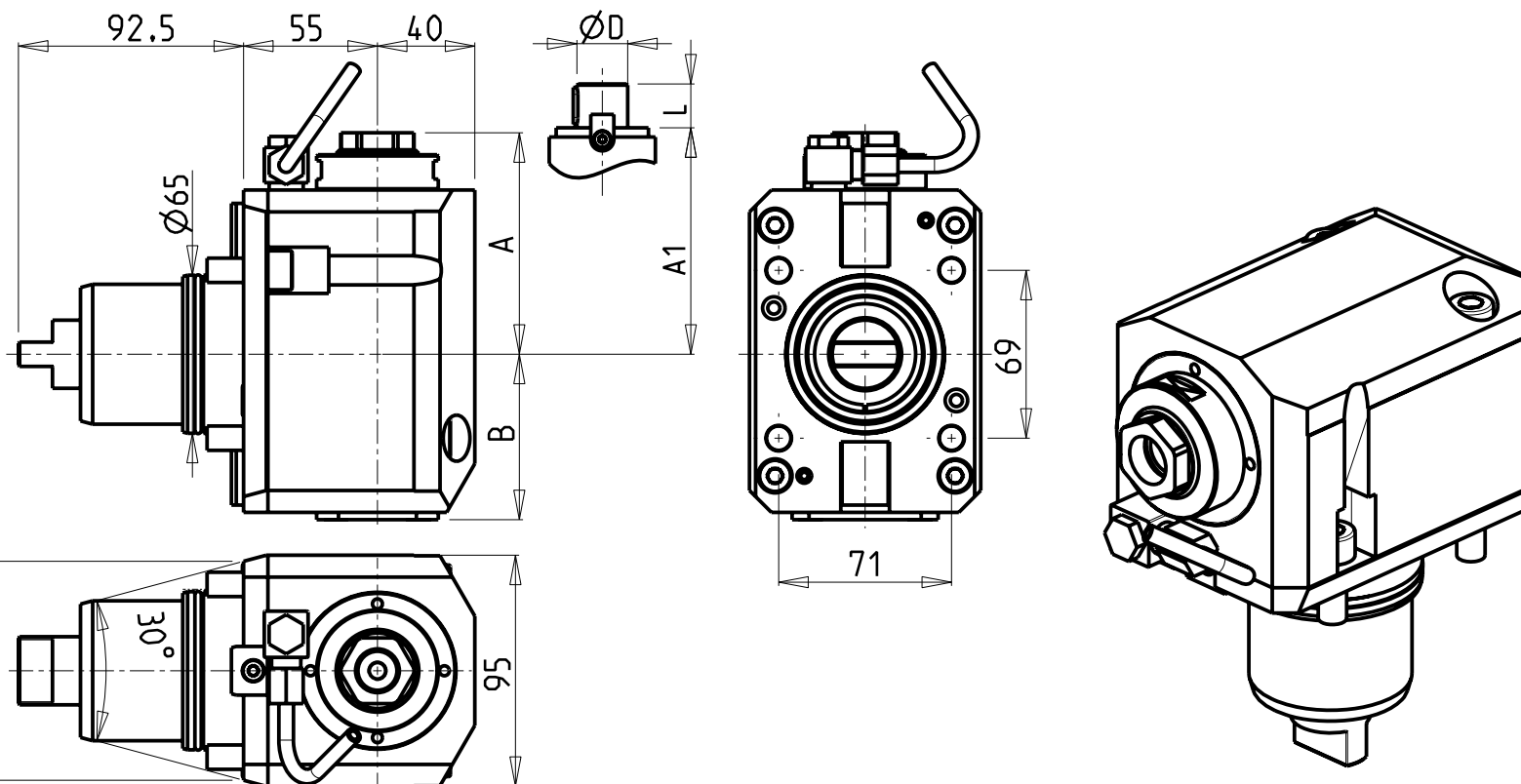
e-mail: mtma@mtmarchetti.com

http://www.mtmarchetti.com

PRODUZIONE MODULI ROTANTI



PAGINA CCM033-1-30



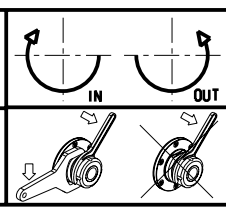
ATTENZIONE - ATTENTION - ACHTUNG

- Per lo smontaggio degli utensili utilizzare sempre la chiave di contrasto come indicato nel manuale d'uso.
- For disassembly of the tools use always the contrast key as mentioned in the user instructions.
- Fuer das Abmontieren der Werkzeuge immer den Gegenschlüssel benutzen wie in der Bedienungsanleitung erwäehnt.

- Chiave inclusa
- Key included
- Schlüssel inbegriffen


Cod. MT	Mandrino Spindel	I	RPM	Coppia Max Max Torque Max Drehmoment	Reversibile lato mandrino/contromandrino Reversible sub/main spindle side Umkehrbare Spindel-seite/ Gegenspindel-seite	Lubr.interna Coolant through Innenkuehlung	Lubr.esterna Ext. coolant Aussenkuehlung	A	A1	B	D	L	CHIAVI NON INCLUDE Keys not included Schlüssel nicht einbegriffen		
NKM0290125	ER A 25	1:1	6000	70Nm	X		X	91.03	-	68	-	-	CHUB46	CHUB27	NEW
NKM0290132	ER A 32	1:1	6000	70Nm	X		X	94.53	-	68	-	-	CHUB46	CHUB32	NEW
NKM0290225	ER A 25	1:1	6000	70Nm	X	P=70bar	X	91.03	-	91.5	-	-	CHUB46	CHUB27	NEW
NKM0290232	ER A 32	1:1	6000	70Nm	X	P=70bar	X	94.53	-	91.5	-	-	CHUB46	CHUB32	NEW
NKM0292219	Ø22x19	1:1	6000	70Nm	X		X	-	80	68	22	19	CHUB46	CH_VTCROCE_M10	NEW

CHIAH CHYUN
 MOD: CT2-52 / CT2-52YM / CT2-52Y2M(S) / CT3-52Y2M / CT2-65 / CT2-65YM / CT2-65Y2M(S) / CT3-65Y2M
 MODULO MOTORIZZATO ASSIALE H=55mm
 Axial driven tool H=55mm
 Axial angetriebenes Werkzeug H=55mm

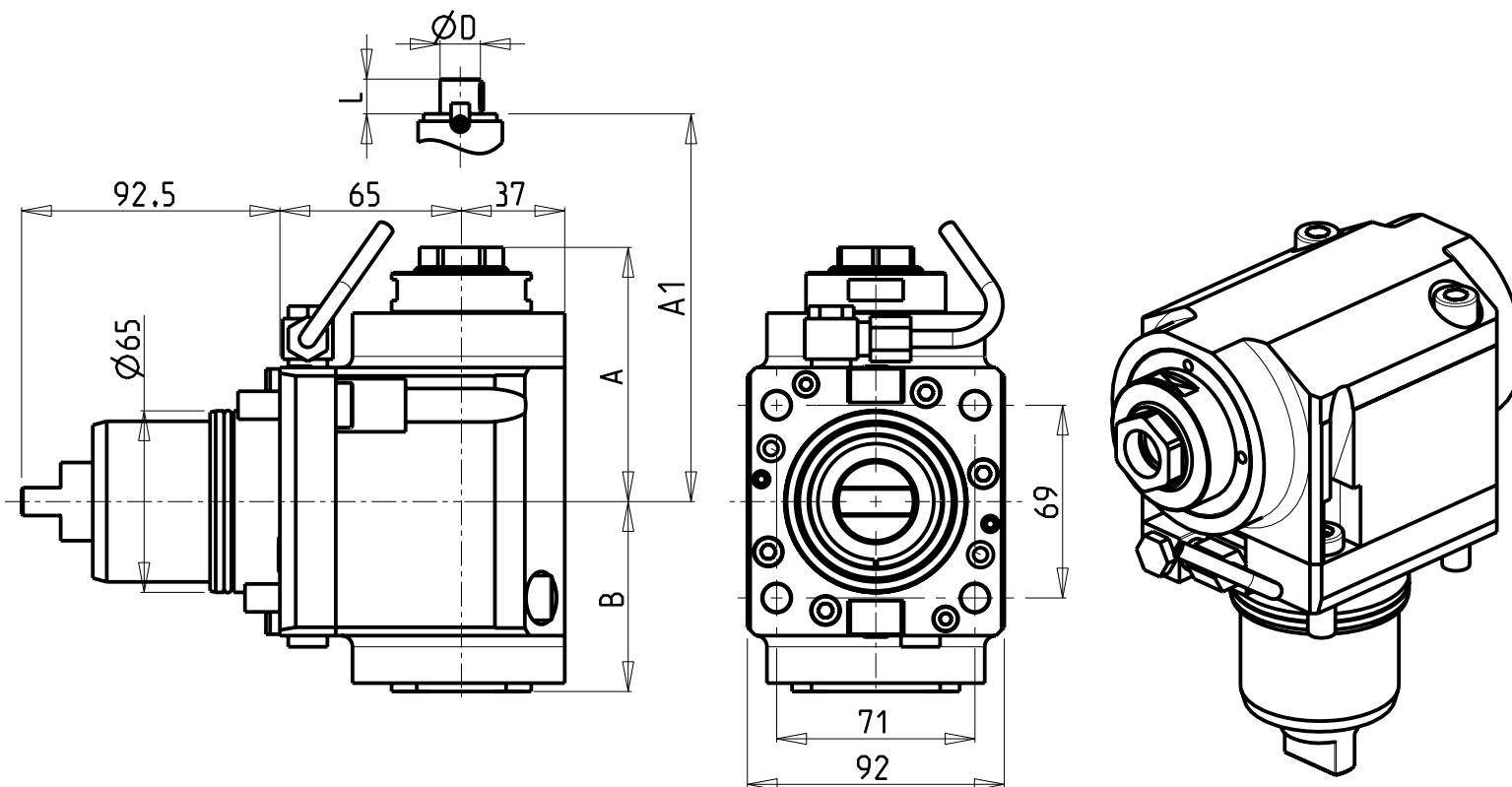


M.T. srl
 Via Casino Albini 480
 Tel. 0541/956034-957884
 Fax 0541/956341
 47842 S. GIOVANNI IN M. (RN)
 e-mail: mtma@mtmarchetti.com
 http://www.mtmarchetti.com

PRODUZIONE MODULI ROTANTI



PAGINA CCM150-1-10



ATTENZIONE - ATTENTION - ACHTUNG

- Per lo smontaggio degli utensili utilizzare sempre la chiave di contrasto come indicato nel manuale d'uso.
- For disassembly of the tools use always the contrast key as mentioned in the user instructions.
- Fuer das Abmontieren der Werkzeuge immer den Gegenschlüssel benutzen wie in der Bedienungsanleitung erwäehnt.

ATTENZIONE - ATTENTION - ACHTUNG

- FINO AD ESAURIMENTO SCORTE
- clearance sale
- solange vorrat

• Chiave inclusa

• Key included

• Schlüssel inbegriffen

Cod. MT	Mandrino Spindle Spindel	I	RPM	Coppia Max Max Torque Max Drehmoment	Reversibile lato mandrino/contromandrino Reversible sub/main spindle side Umkehrbare Spindel-seite/ Gegenspindel-seite	Lubr.interna Coolant through Innenkuehlung	Lubr.esterna Ext. coolant Aussenkuehlung	A	A1	B	CHIAVI NON INCLUSE Keys not included Schlüssel nicht einbegriffen	
NKM0610125	ER A 25	1:1	6000	70Nm	X		X	91.03	-	68	CHUB46	CHUB27
NKM0610132	ER A 32	1:1	6000	70Nm	X		X	94.53	-	68	CHUB46	CHUB32
NKM0610225	ER A 25	1:1	6000	70Nm	X	P=70bar	X	91.03	-	91.5	CHUB46	CHUB27
NKM0610232	ER A 32	1:1	6000	70Nm	X	P=70bar	X	94.53	-	91.5	CHUB46	CHUB32
NKM0612219	Ø22x19	1:1	6000	70Nm	X		X	-	80	68	CHUB46	CH_VTCROCE_M10

NEW

NEW

NEW

NEW

NEW

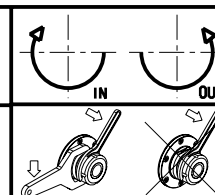
CHIAH CHYUN

MOD: CT2-52 / CT2-52YM / CT2-52Y2M(S) / CT3-52Y2M / CT2-65 / CT2-65YM / CT2-65Y2M(S) / CT3-65Y2M

MODULO MOTORIZZATO ASSIALE H=65mm

Axial driven tool H=65mm

Axial angetriebenes Werkzeug H=65mm



M.T. srl

Via Casino Albini 480
Tel. 0541/956034-957884

Fax 0541/956341

47842 S. GIOVANNI IN M. (RN)

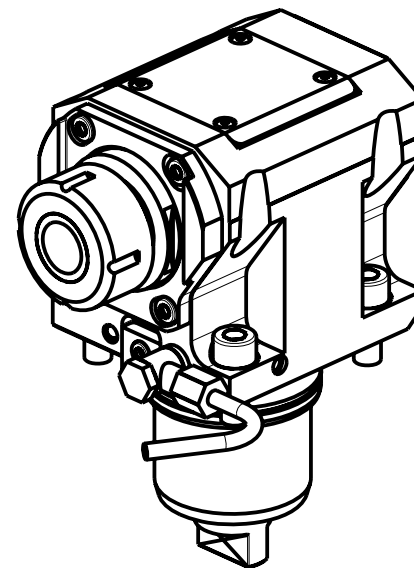
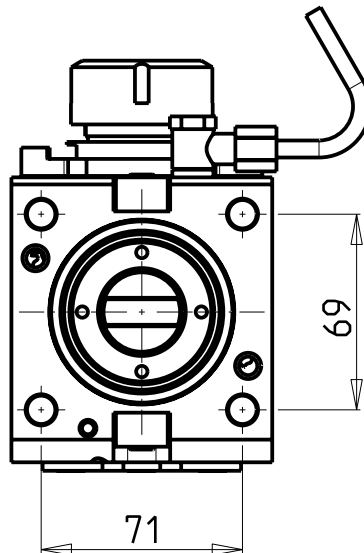
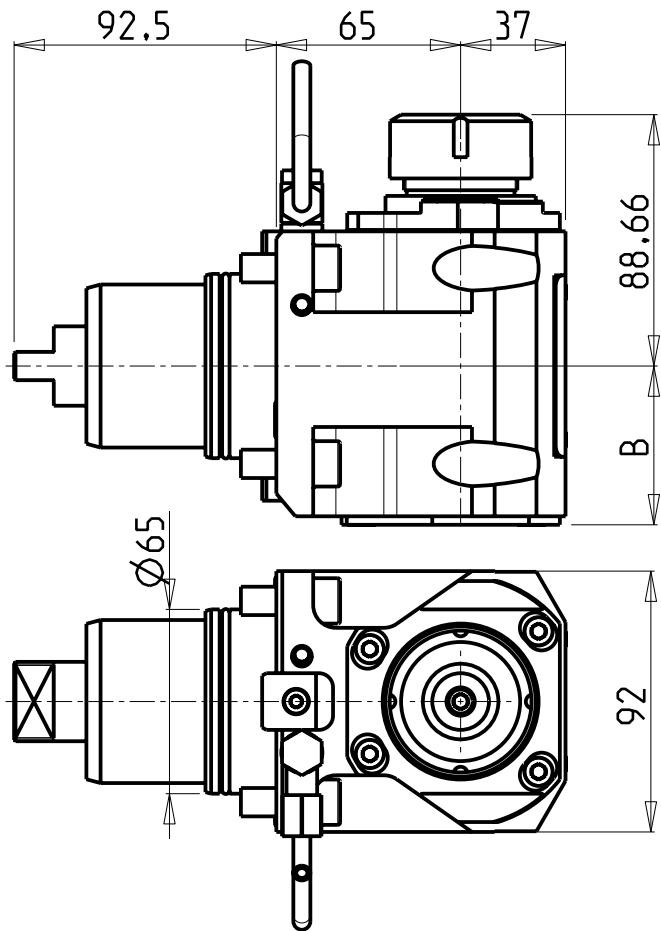
e-mail: mtma@mtmarchetti.com

http://www.mtmarchetti.com

PRODUZIONE MODULI ROTANTI



PAGINA CCM150-1-20



ATTENZIONE - ATTENTION - ACHTUNG

- Per lo smontaggio degli utensili utilizzare sempre la chiave di contrasto come indicato nel manuale d'uso.
- For disassembly of the tools use always the contrast key as mentioned in the user instructions.
- Fuer das Abmontieren der Werkzeuge immer den Gegenschlüssel benutzen wie in der Bedienungsanleitung erwäehnt.

Cod. MT	Mandrino Spindle Spindel	I	RPM	Coppia Max Max Torque Max Drehmoment	Reversibile lato mandrino/contromandrino Reversible sub/main spindle side Umkehrbare Spindel-seite/ Gegenspindel-seite	Lubr.interna Coolant through Innenkuehlung	Lubr.esterna Ext. coolant Aussenkuehlung	B	CHIAVI NON INCLUSE Keys not included Schluessel nicht einbegriffen
NKM0740132	ER32	1:1	6000	70Nm	X		X	56	CHSTER32 OKU0650004
NKM0740232	ER32	1:1	6000	70Nm	X	P=70bar	X	67	CHSTER32 OKU0650004

- Chiave inclusa
- Key included
- Schluessel inbegriffen

NEW
NEW

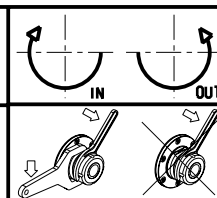
CHIAH CHYUN

MOD: CT2-52 / CT2-52YM / CT2-52Y2M(S) / CT3-52Y2M / CT2-65 / CT2-65YM / CT2-65Y2M(S) / CT3-65Y2M

MODULO MOTORIZZATO ASSIALE H=65mm

Axial driven tool H=65mm

Axial angetriebenes Werkzeug H=65mm



M.T. srl

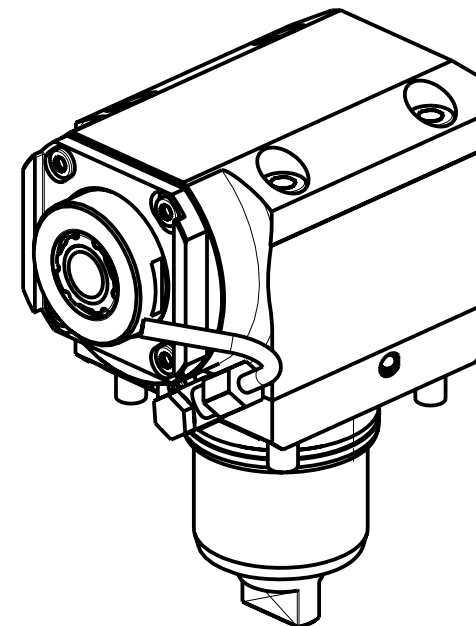
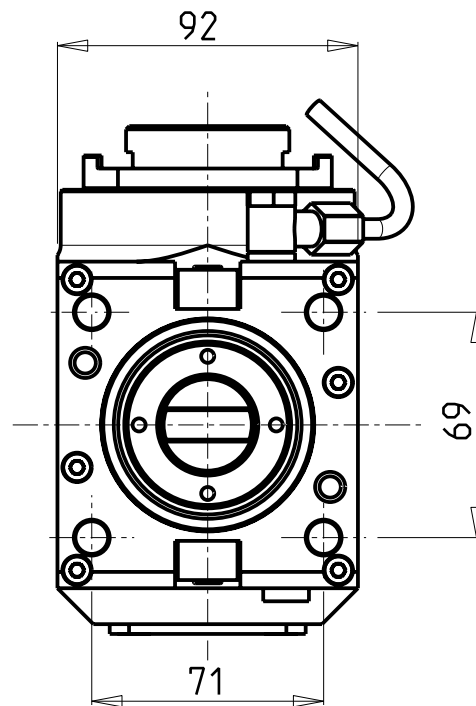
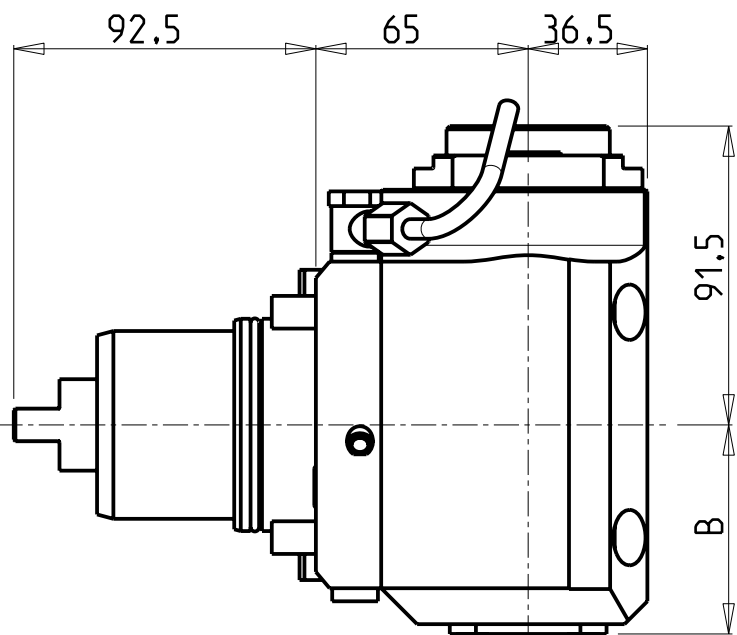
Via Casino Albini 480
Tel. 0541/956034-957884
Fax 0541/956341

47842 S. GIOVANNI IN M. (RN)
e-mail: mtma@mtmarchetti.com
http://www.mtmarchetti.com

PRODUZIONE MODULI ROTANTI



PAGINA CCM150-1-21



Cod. MT	Mandrino Spindle Spindel	I	RPM	Coppia Max Max Torque Max Drehmoment	Reversibile lato mandrino/contromandrino Reversible sub/main spindle side Umkehrbare Spindel-seite/Gegenspindel-seite	Lubrificazione int. Coolant through Innenkuehlung	Lubrificazione est. Ext. coolant Aussenkuehlung	B	CHIAVI NON INCLUSE Keys not included Schluessel nicht einbegriffen			
NKM0860325	ER A 25	1:2	12000	30Nm	X		X	64	CHUB27	CHTAER25ZC	OKU0650004	NEW
NKM0860425	ER A 25	1:2	12000	30Nm	X	P=70bar	X	74	CHUB27	CHTAER25ZC	OKU0650004	NEW

- Chiave inclusa
- Key included
- Schluessel inbegriffen

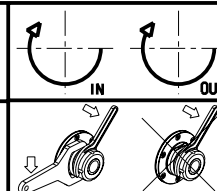
CHIAH CHYUN

MOD: CT2-52 / CT2-52YM / CT2-52Y2M(S) / CT3-52Y2M / CT2-65 / CT2-65YM / CT2-65Y2M(S) / CT3-65Y2M

MODULO MOTORIZZATO ASSIALE MOLTIPLICATO I=1:2

Axial geared-up I=1:2 driven tool

Axial angetriebenes Werkzeug uebersetzt I=1:2



M.T. srl

Via Casino Albini 480
Tel. 0541/956034-957884
Fax 0541/956341

47842 S. GIOVANNI IN M. (RN)
e-mail: mtma@mtmarchetti.com
http://www.mtmarchetti.com

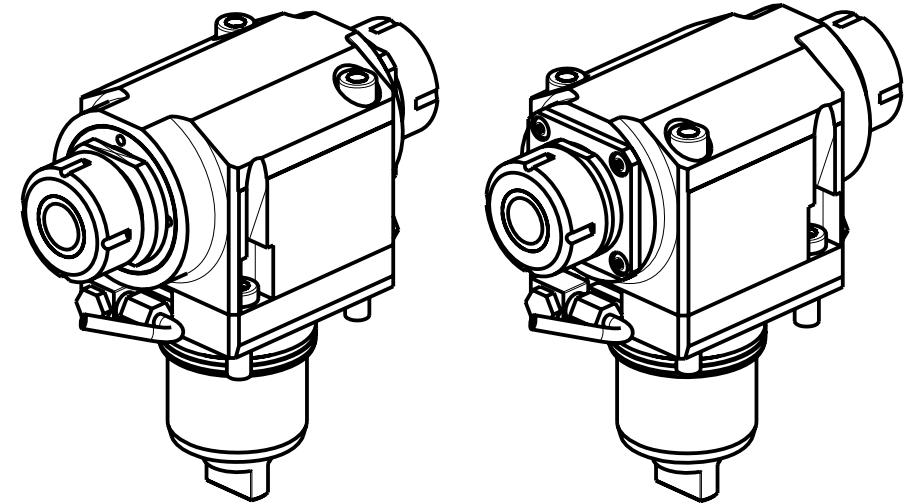
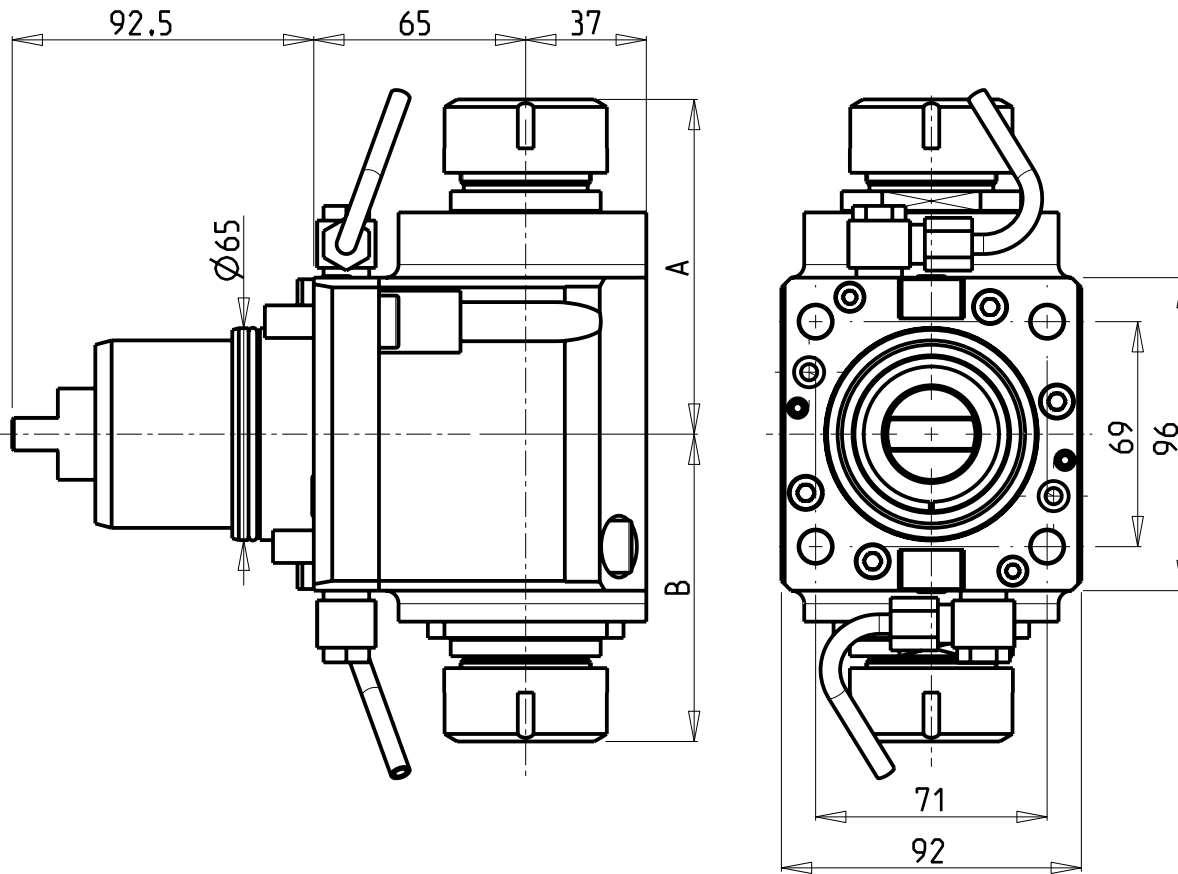
PRODUZIONE MODULI ROTANTI



PAGINA CCM200-1-10

ATTENZIONE - ATTENTION - ACHTUNG

- Per lo smontaggio degli utensili utilizzare sempre la chiave di contrasto come indicato nel manuale d'uso.
- For disassembly of the tools use always the contrast key as mentioned in the user instructions.
- Fuer das Abmontieren der Werkzeuge immer den Gegenschlüssel benutzen wie in der Bedienungsanleitung erwäehnt.



Cod. MT	Mandrino Spindle Spindel	I	RPM	Coppia Max Max Torque Max Drehmoment	Reversibile lato mandrino/contromandrino Reversible sub/main spindle side Umkehrbare Spindel-seite/ Gegenspindel-seite	Lubrificazione est. Ext. coolant Aussenkuehlung	A	B	CHIAVI NON INCLUSE Keys not included Schluessel nicht einbegriffen	
NKM0600232	ER32+ER32	1:1	6000	70Nm	X	X	102.66	94.26	CHSTER32	CHUB46

NEW

CHIAH CHYUN

MOD: CT2-52 / CT2-52YM / CT2-52Y2M(S) / CT3-52Y2M / CT2-65 / CT2-65YM / CT2-65Y2M(S) / CT3-65Y2M

MODULO MOTORIZZATO ASSIALE BISPORGENTE H=65mm

Axial opposite face twin driven tool H=65mm

Axial angetriebenes Werkzeug halb vorspringend H=65mm

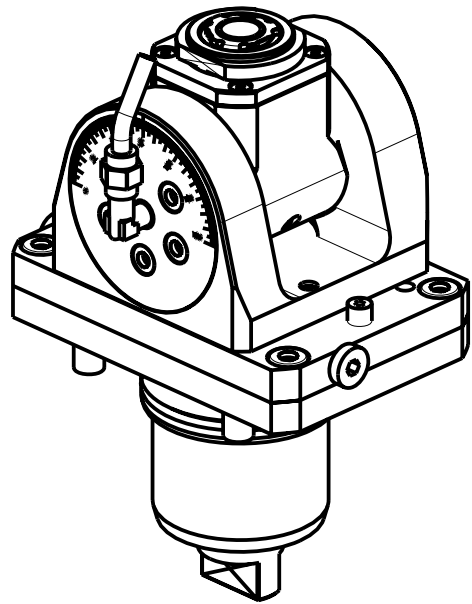
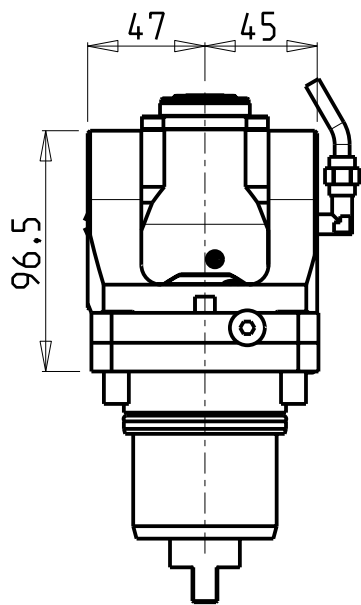
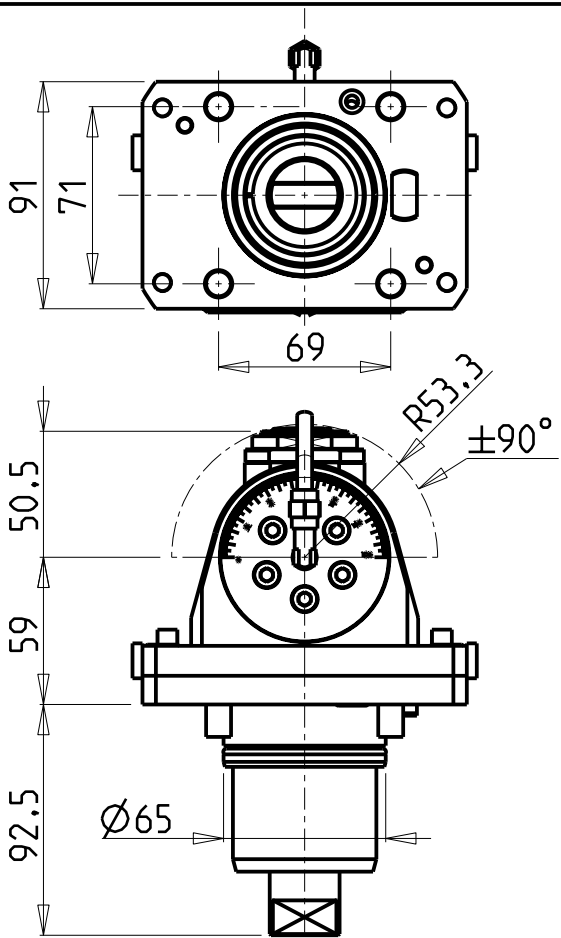
M.T. srl

Via Casino Albini 480
Tel. 0541/956034-957884
Fax 0541/956341
47842 S. GIOVANNI IN M. (RN)
e-mail: mtma@mtmarchetti.com
http://www.mtmarchetti.com

PRODUZIONE MODULI ROTANTI



PAGINA CCM240-1-10



ATTENZIONE - ATTENTION - ACHTUNG

- Per lo smontaggio degli utensili utilizzare sempre la chiave di contrasto come indicato nel manuale d'uso.
- For disassembly of the tools use always the contrast key as mentioned in the user instructions.
- Fuer das Abmontieren der Werkzeuge immer den Gegenschlüssel benutzen wie in der Bedienungsanleitung erwäohnt.

ATTENZIONE - ATTENTION - ACHTUNG

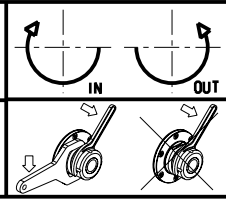
- Verificare la tabella sottostante per possibile interferenza su alcuni modelli di macchine
- Please check the table below for possible interferences on some machine models
- Die untenstehende tabelle unbedingt auf eventuelle interferenzen auf eingen maschinen modellen überprüfen

Cod. MT	Mandrino Spindle Spindel	I	RPM	Coppia Max Max Torque Max Drehmoment	Reversibile lato mandrino/contromandrino Reversible sub/main spindle side Umkehrbare Spindel-seite/ Gegenspindel-seite	Lubr.interna Coolant through Innenkuehlung	Lubrificazione est. Ext. coolant Aussenkuehlung	CHIAVI INCLUSE Keys included Schluessel inbegriffen					
								CHUB22	CHUB36	CHESL05	CHESL07	CHTAER20ZC	
NKM0810120	ERA20	1:1	6000	30Nm	X		X	CHUB22	CHUB36	CHESL05	CHESL07	CHTAER20ZC	NEW
NKM0810220	ERA20	1:1	6000	30Nm	X	P=70bar	X	CHUB22	CHUB36	CHESL05	CHESL07	CHTAER20ZC	NEW

CHIAH CHYUN


MOD: CT2-52 / CT2-52YM / CT2-52Y2M(S) / CT3-52Y2M / CT2-65 / CT2-65YM / CT2-65Y2M(S) / CT3-65Y2M

MODULO MOTORIZZATO ORIENTABILE ±90°
 ±90° adjustable angle driven tool
 Angetriebenes Werkzeug schwenkbar ±90°

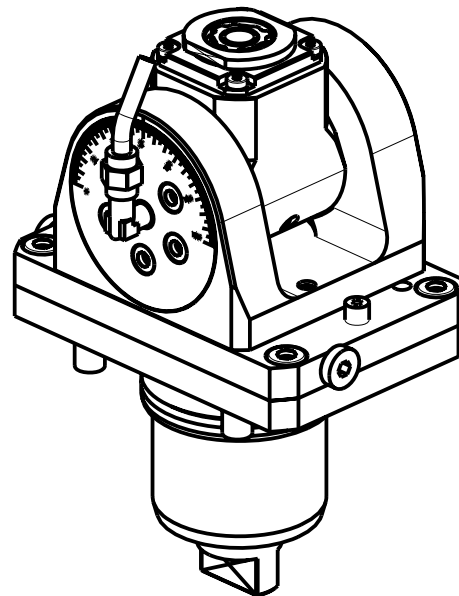
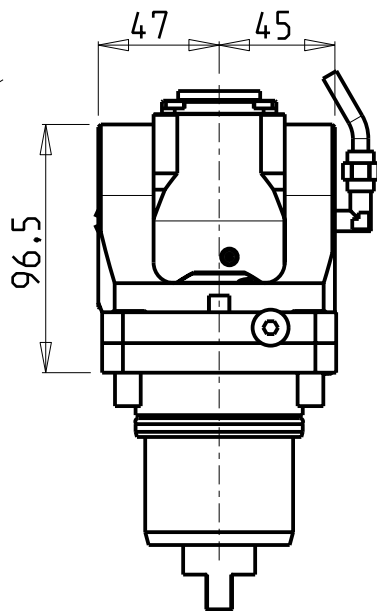
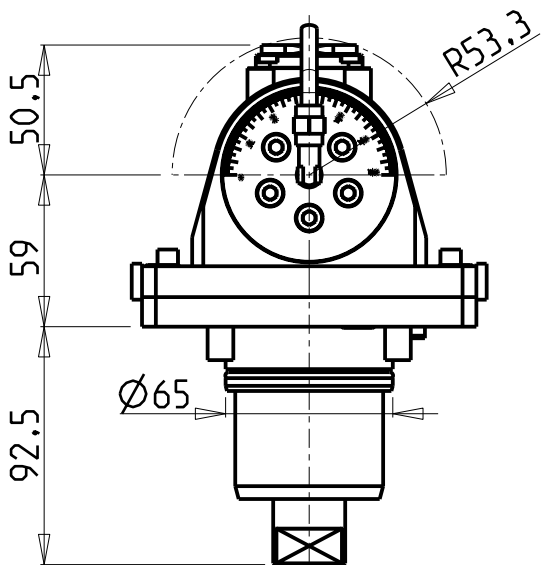
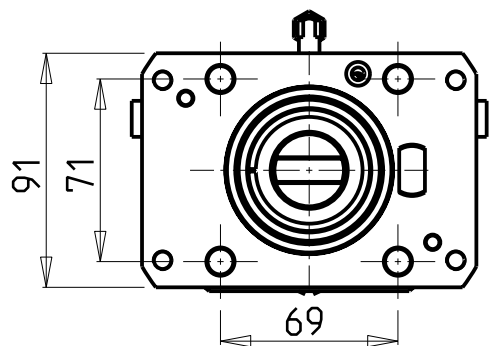


M.T. srl
 Via Casino Albini 480
 Tel. 0541/956034-957884
 Fax 0541/956341
 47842 S. GIOVANNI IN M. (RN)
 e-mail: mtma@mtmarchetti.com
 http://www.mtmarchetti.com

PRODUZIONE MODULI ROTANTI



PAGINA CCM335-1-00



ATTENZIONE - ATTENTION - ACHTUNG

- Per lo smontaggio degli utensili utilizzare sempre la chiave di contrasto come indicato nel manuale d'uso.
- For disassembly of the tools use always the contrast key as mentioned in the user instructions.
- Fuer das Abmontieren der Werkzeuge immer den Gegenschlüssel benutzen wie in der Bedienungsanleitung erwäehnt.

ATTENZIONE - ATTENTION - ACHTUNG

- Verificare la tabella sottostante per possibile interferenza su alcuni modelli di macchine
- Please check the table below for possible interferences on some machine models
- Die untenstehende tabelle unbedingt auf eventuelle interferenzen auf eingen maschinen modellen überprüfen

Cod. MT	Mandrino Spindle Spindel	I	RPM	Coppia Max Max Torque Max Drehmoment	Reversibile lato mandrino/contromandrino Reversible sub/main spindle side Umkehrbare Spindel-seite/ Gegenspindel-seite	Lubr.interna Coolant through Innenkuehlung	Lubrificazione est. Ext. coolant Aussenkuehlung	CHIAVI INCLUSE Keys included Schlüssel inbegriffen					
NKM0810316	ERA16	1:2	12000	8Nm	X		X	CHUB19_SP3	CHUB32	CHESL05	CHESL07	CHTAER16ZC	NEW
NKM0810416	ERA16	1:2	12000	8Nm	X	P=70bar	X	CHUB19_SP3	CHUB32	CHESL05	CHESL07	CHTAER16ZC	NEW

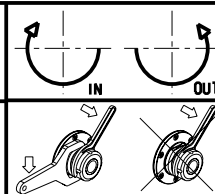
CHIAH CHYUN

MOD: CT2-52 / CT2-52YM / CT2-52Y2M(S) / CT3-52Y2M / CT2-65 / CT2-65YM / CT2-65Y2M(S) / CT3-65Y2M

MODULO MOTORIZZATO ORIENTABILE +/-90° MOLTIPLICATO I=1:2

+/-90° adjustable angle driven tool geared-up I=1:2

Angetriebenes Werkzeug schwenkbar +/-90° uebersetzt I=1:2



M.T. srl

Via Casino Albini 480
Tel. 0541/956034-957884

Fax 0541/956341

47842 S. GIOVANNI IN M. (RN)

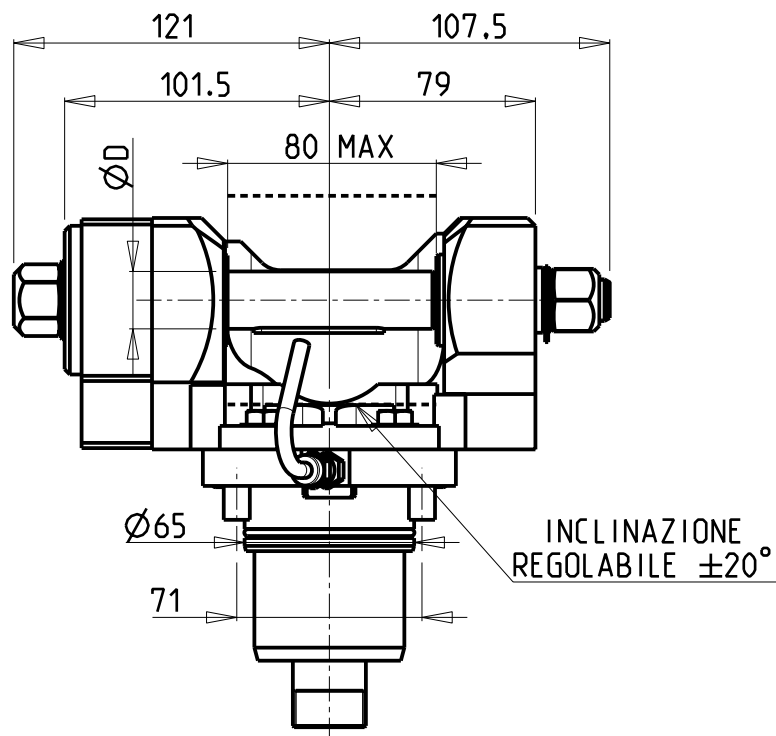
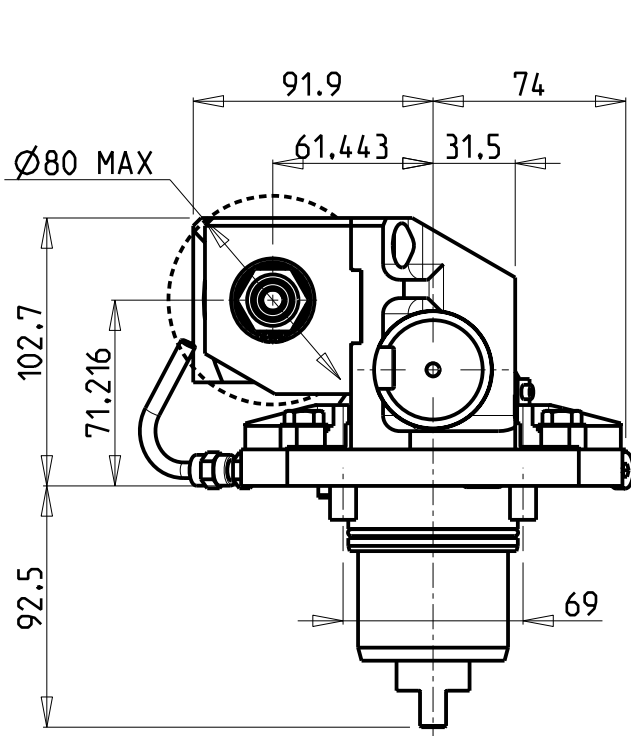
e-mail: mtma@mtmarchetti.com

http://www.mtmarchetti.com

PRODUZIONE MODULI ROTANTI

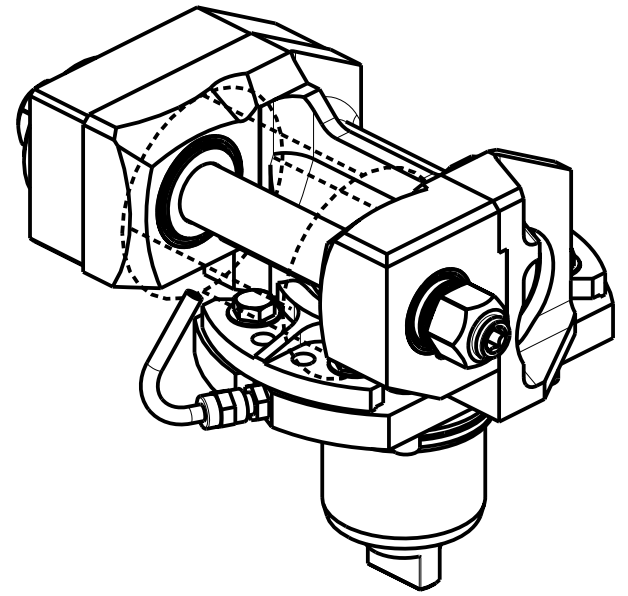


PAGINA CCM336-1-00



ATTENZIONE - ATTENTION - ACHTUNG

- FUORI VOLTEGGIO!
- OUT OF MAXIMUM SWING!
- WERKZEUG AUSSER INTERFERENZ!



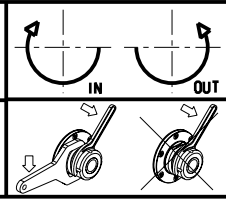
DOTAZIONI - SUPPLIED WITH - AUSSTATTUNG

mm / inch	- N°1 ALBERO + DISTANZIALI - N°1 SHAFT + SPACER - N°1 DORN + ABSTANDSSTUECK
-----------	---

PER ALBERI E DISTANZIALI VEDI PAG. TBL250-1-00
FOR SHAFT END SPACER SEE PAGE TBL250-1-00
FUER DORN UND ABSTANDSSTUECK SEITE TBL250-1-00


Cod. MT	I	RPM max	Coppia Max Max Torque Max Drehmoment	Reversibile lato mandrino/contromandrino Reversible sub/main spindle side Umkehrbare Spindel-seite/ Gegenspindel-seite	Lubrificazione est. Ext. coolant Aussenkuehlung	D (mm)	D (Inch)	CHIAVI INCLUSE Keys included Schluesssel inbegriffen				
								CHUB13	CHUB24	CHESL08	CHESL07	
NKM0331100	1:1	6000	60Nm	X	X	16-22-27-32	3/4"-1"-1 1/4"	CHUB13	CHUB24	CHESL08	CHESL07	NEW
NKM0332100	2:1	3000	80Nm	X	X	16-22-27-32	3/4"-1"-1 1/4"	CHUB13	CHUB24	CHESL08	CHESL07	NEW

CHIAH CHYUN
 MOD: CT2-52 / CT2-52YM / CT2-52Y2M(S) / CT3-52Y2M / CT2-65 / CT2-65YM / CT2-65Y2M(S) / CT3-65Y2M
 MODULO MOTORIZZATO PORTACREATORE
 Driven gear hobber
 Angetriebenes Zahnradwaelzfraes-Werkzeug

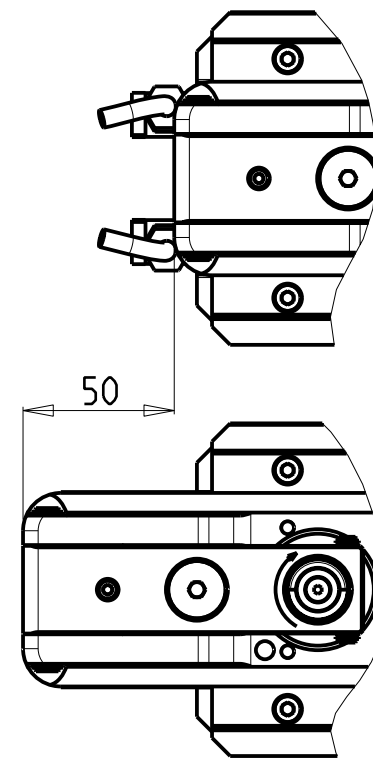
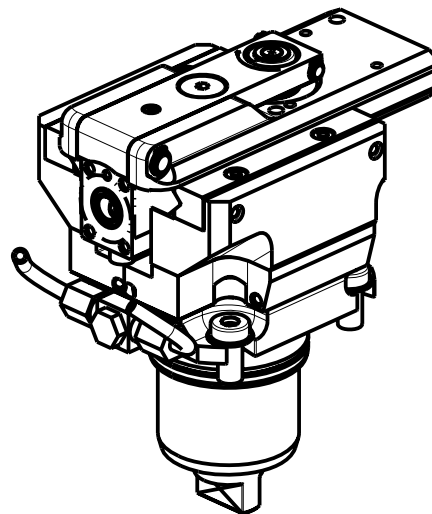
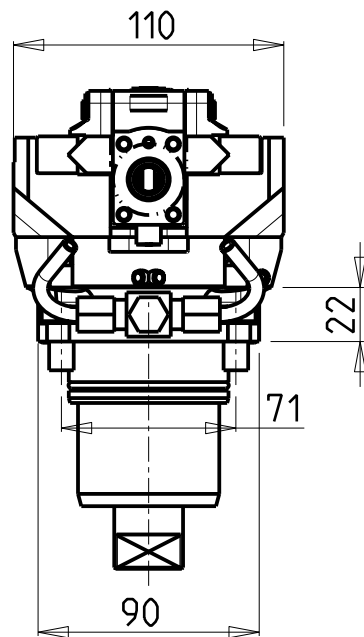
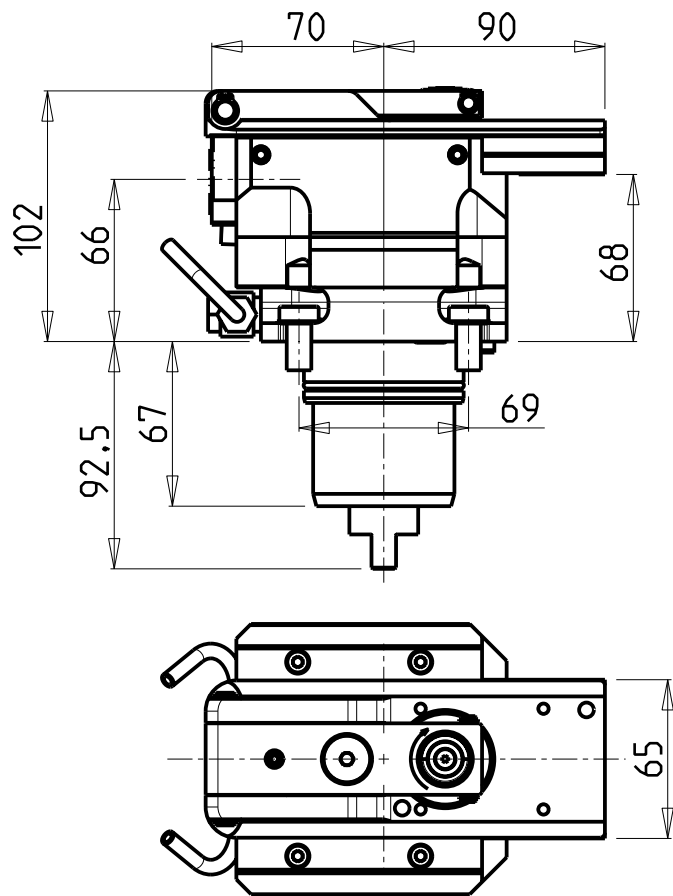


M.T. srl
 Via Casino Albini 480
 Tel. 0541/956034-957884
 Fax 0541/956341
 47842 S. GIOVANNI IN M. (RN)
 e-mail: mtma@mtmarchetti.com
 http://www.mtmarchetti.com

PRODUZIONE MODULI ROTANTI



PAGINA CCM340-1-00



Cod. MT	I	RPM MAX	Reversibile lato mandrino/contromandrino Reversible sub/main spindle side Umkehrbare Spindel-seite/ Gegenspindel-seite	Lubr. esterna Ext. coolant Aussenkuehlung
NKM0940100	4:1	2000	X	X

NEW

PER UTENSILI STOZZATORI VEDI PAG. TBL400-1-00
 FOR DRIVEN SLOTTING TOOL CUTTING-TOOLS SEE PAGE TBL400-1-00
 FÜR NUTENSTOSS-WERKZEUG SCHNEIDWERKZEUGE SIEHE SEITE TBL400-1-00

CHIAH CHYUN

MOD: CT2-52 / CT2-52YM / CT2-52Y2M(S) / CT3-52Y2M / CT2-65 / CT2-65YM / CT2-65Y2M(S) / CT3-65Y2M

MODULO MOTORIZZATO STOZZATORE

Slotting driven tool

Keilnutenstossmaschine

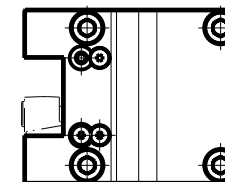
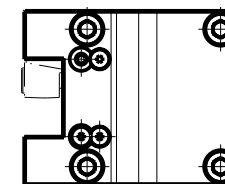
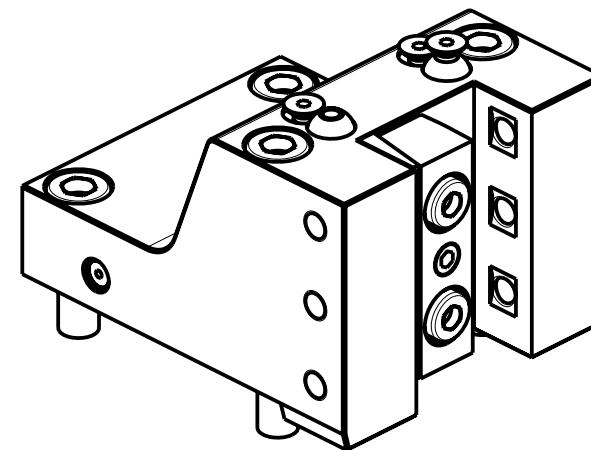
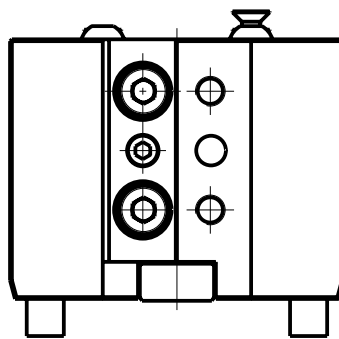
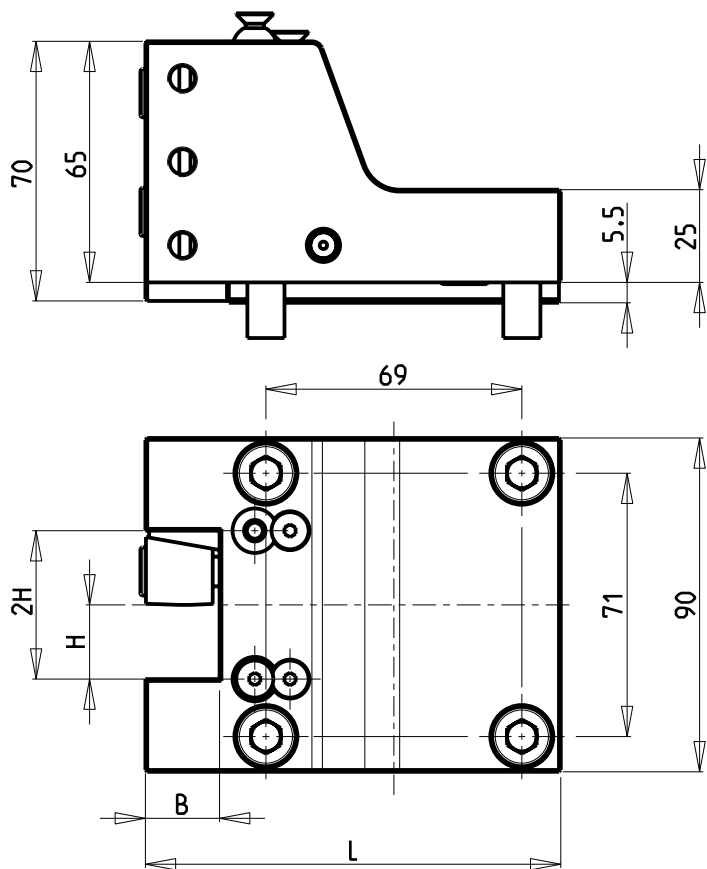
M.T. srl

Via Casino Albini 480
 Tel. 0541/956034-957884
 Fax 0541/956341
 47842 S. GIOVANNI IN M. (RN)
 e-mail: mtma@mtmarchetti.com
 http://www.mtmarchetti.com

PRODUZIONE MODULI ROTANTI



PAGINA CCM360-1-00



Cod. MT	N°Utensili N°Tools N°Werkzeuge	Reversibile lato mandrino/contromandrino Reversible sub/main spindle side Umkehrbare Spindel-seite/ Gegenspindel-seite	L	B	H	
NKM0412000	1/2	X	112	20	20	NEW
NKM0412500	1/2	X	117	25	25	NEW

CHIAH CHYUN

MOD: CT2-52 / CT2-52YM / CT2-52Y2M(S) / CT3-52Y2M / CT2-65 / CT2-65YM / CT2-65Y2M(S) / CT3-65Y2M

PORTAUTENSILE RADIALE SINGOLO

Radial single static tool

Radial Single-Werkzeughalter

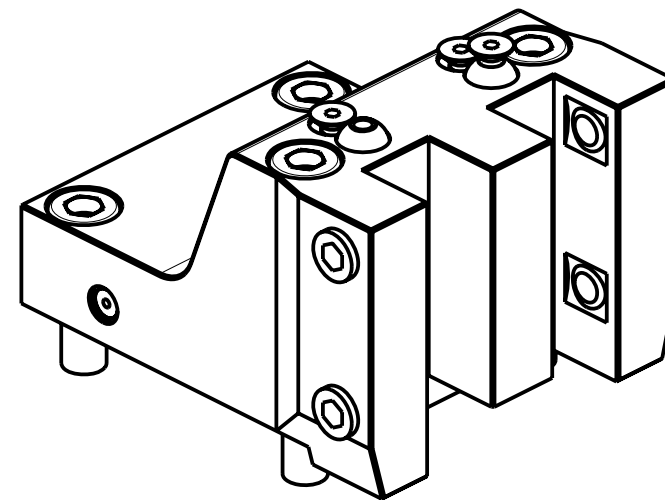
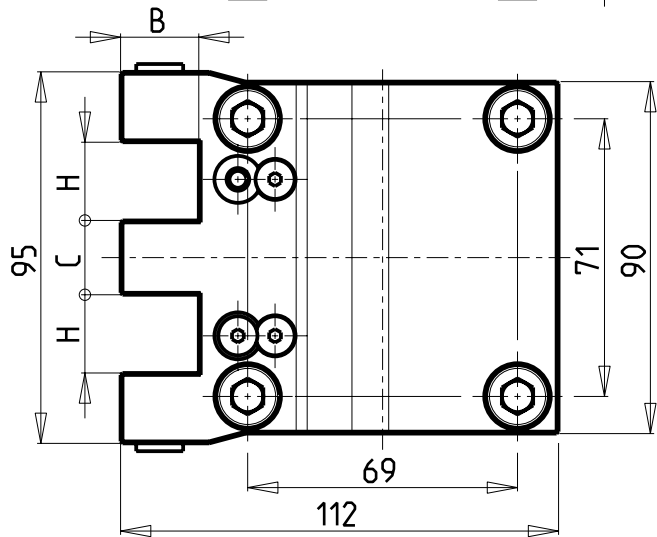
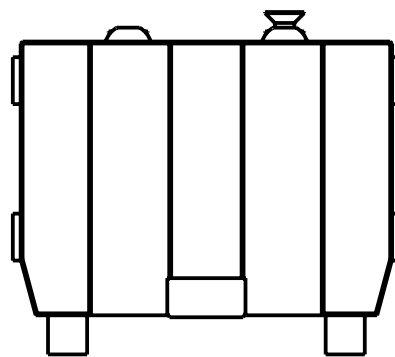
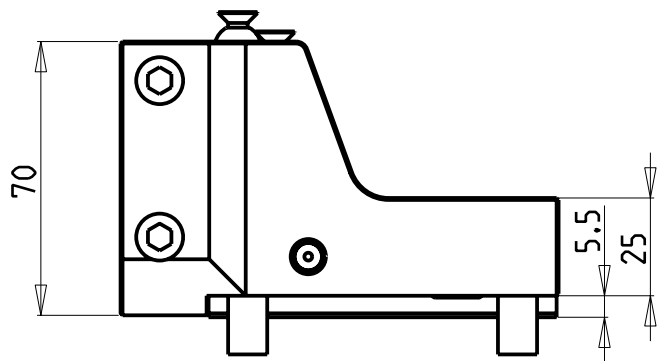
M.T. srl

Via Casino Albini 480
Tel. 0541/956034-957884
Fax 0541/956341
47842 S. GIOVANNI IN M. (RN)
e-mail: mtma@mtmarchetti.com
http://www.mtmarchetti.com

PRODUZIONE MODULI ROTANTI



PAGINA CCM423-1-00



Cod. MT	N°Utensili N°Tools N°Werkzeuge	Reversibile lato mandrino/contromandrino Reversible sub/main spindle side Umkehrbare Spindelseite/ Gegenspindelseite	Misure Dimensions Masse	B	H	C	
NKM0362000	2	X	mm	20	20	19	NEW
NKM0361905	2	X	inch	3/4"	3/4"	19 (mm)	NEW

CHIAH CHYUN

MOD: CT2-52 / CT2-52YM / CT2-52Y2M(S) / CT3-52Y2M / CT2-65 / CT2-65YM / CT2-65Y2M(S) / CT3-65Y2M

PORTAUTENSILE RADIALE SOVRAPPOSTO

Radial single side twin static tool

Radial Werkzeughalter ueberlagert

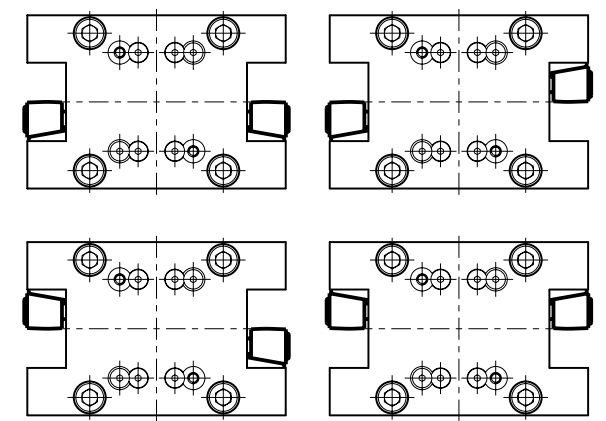
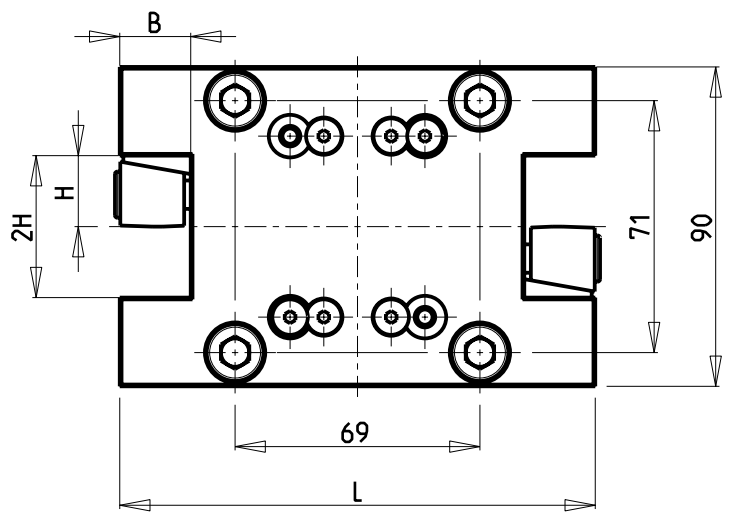
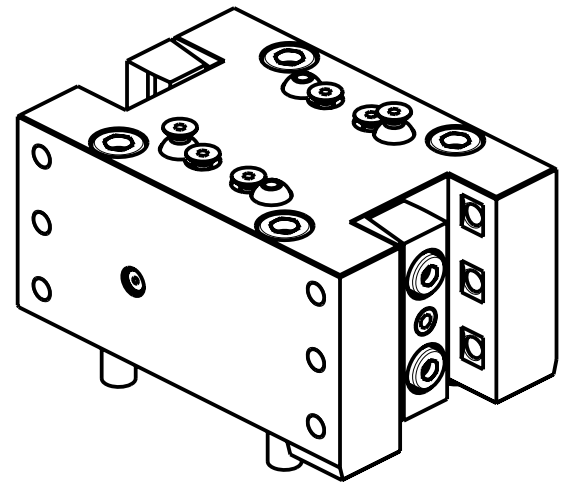
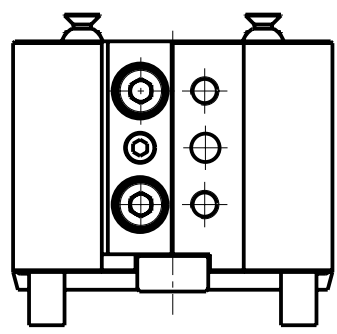
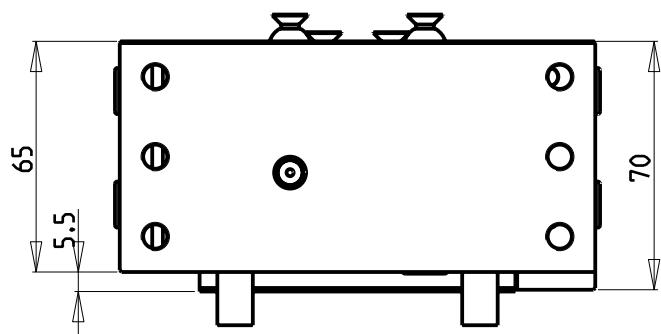
M.T. srl

Via Casino Albini 480
Tel. 0541/956034-957884
Fax 0541/956341
47842 S. GIOVANNI IN M. (RN)
e-mail: mtma@mtmarchetti.com
http://www.mtmarchetti.com

PRODUZIONE MODULI ROTANTI



PAGINA CCM440-1-00



Cod. MT	N°Utensili N°Tools N°Werkzeuge	Reversibile lato mandrino/contromandrino Reversible sub/main spindle side Umkehrbare Spindel-seite/ Gegenspindel-seite	L	B	H	
NKM0422000	2	X	134	20	20	NEW
NKM0422500	2	X	144	25	25	NEW

CHIAH CHYUN

MOD: CT2-52 / CT2-52YM / CT2-52Y2M(S) / CT3-52Y2M / CT2-65 / CT2-65YM / CT2-65Y2M(S) / CT3-65Y2M

PORTAUTENSILE RADIALE DOPPIO

Radial double static tool

Radial Doppel-Werkzeughalter

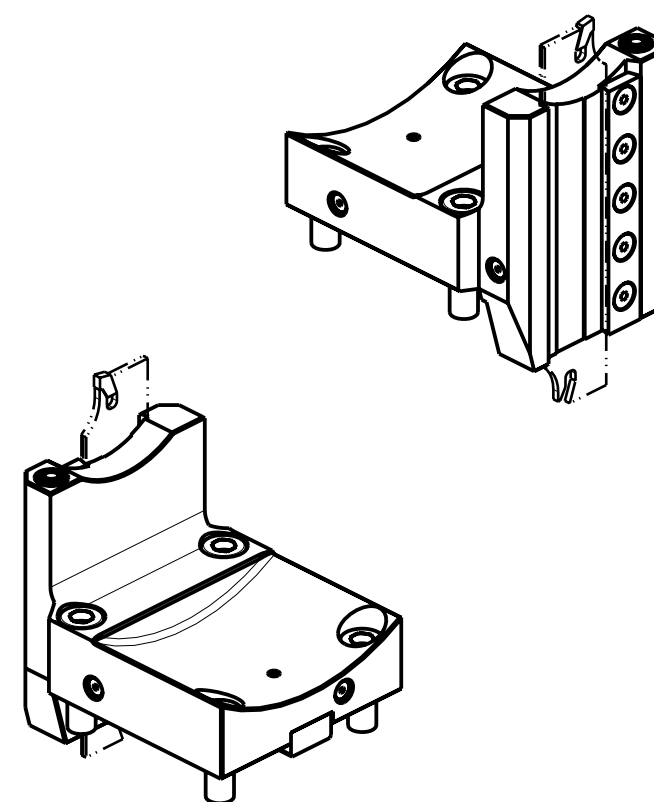
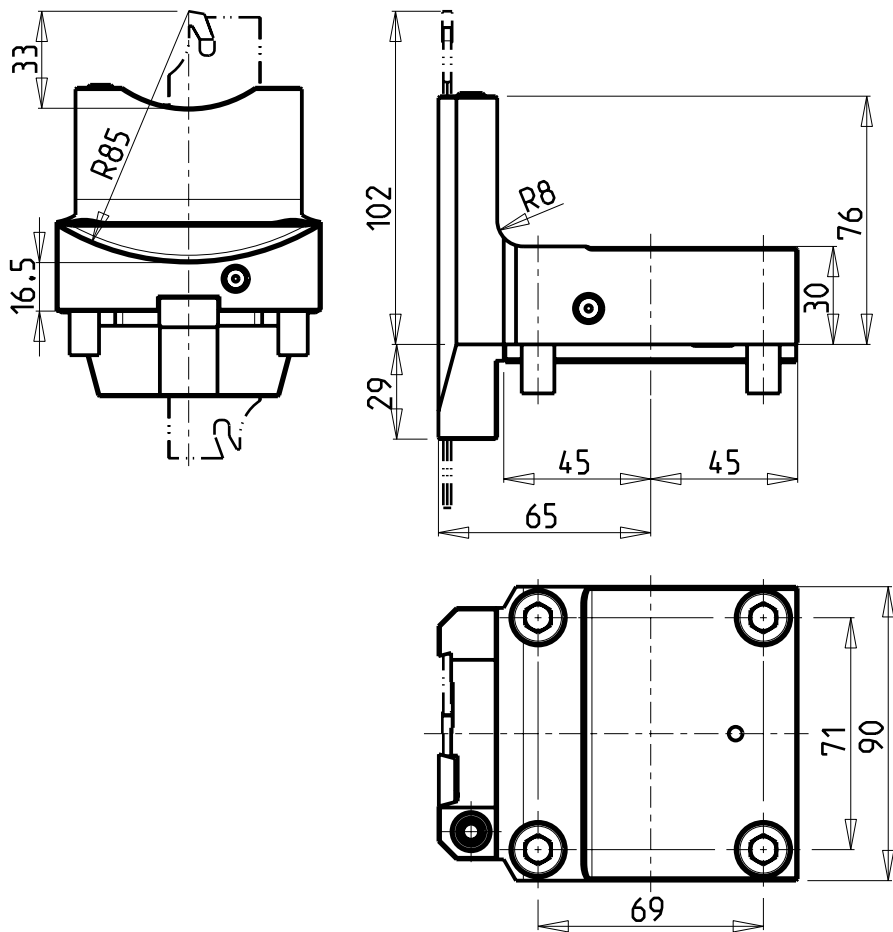
M.T. srl

Via Casino Albini 480
Tel. 0541/956034-957884
Fax 0541/956341
47842 S. GIOVANNI IN M. (RN)
e-mail: mtma@mtmarchetti.com
http://www.mtmarchetti.com

PRODUZIONE MODULI ROTANTI



PAGINA CCM453-1-00



DOTAZIONI - SUPPLIED WITH - AUSSTATTUNG

N°1 - LAMA - BLADE - KLINGE ISCAR H=32 Sp. 3/4mm
(KENNAMETAL OPTIONAL)

N°10 - INSERTI - INSERTS - EINLAGEN

N°1 - CHIAVE A T PER MONTAGGIO INSERTI
- T-WRENCH FOR INSERT SET UP
- T-SCHLUESSEL FUER EINSATZSTUECK-MONTAGE

Cod. MT	N°Utensili N°Tools N°Werkzeuge	Reversibile lato mandrino/contromandrino Reversible sub/main spindle side Umkehrbare Spindel-seite/ Gegenspindel-seite
NKM0400132	1	X

NEW

CHIAH CHYUN

MOD: CT2-52 / CT2-52YM / CT2-52Y2M(S) / CT3-52Y2M / CT2-65 / CT2-65YM / CT2-65Y2M(S) / CT3-65Y2M

PORTAUTENSILE RADIALE PER LAMA

Radial blade holder

Radial Abstechhalter

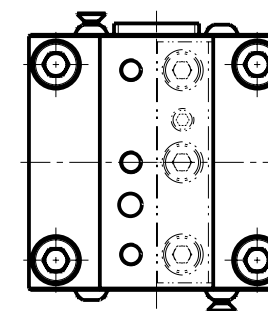
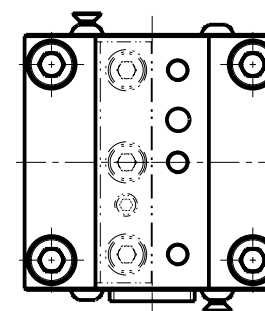
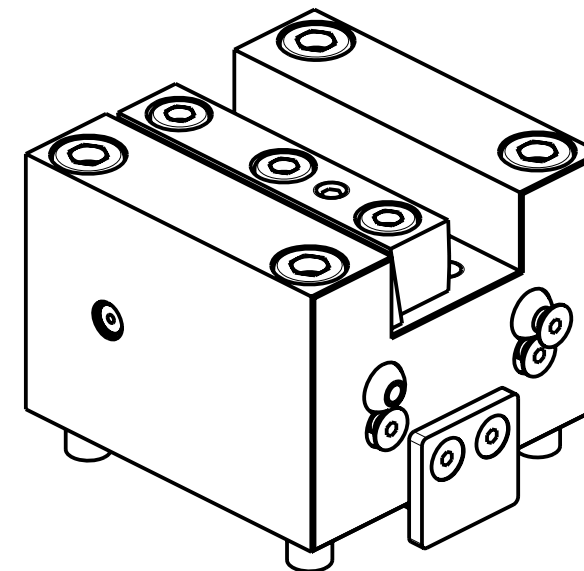
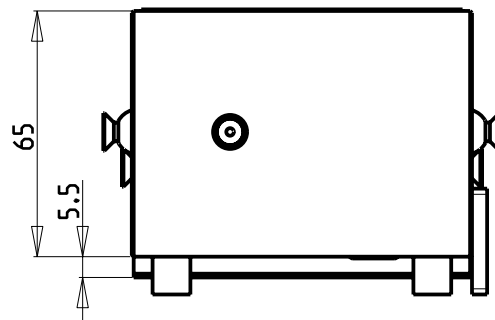
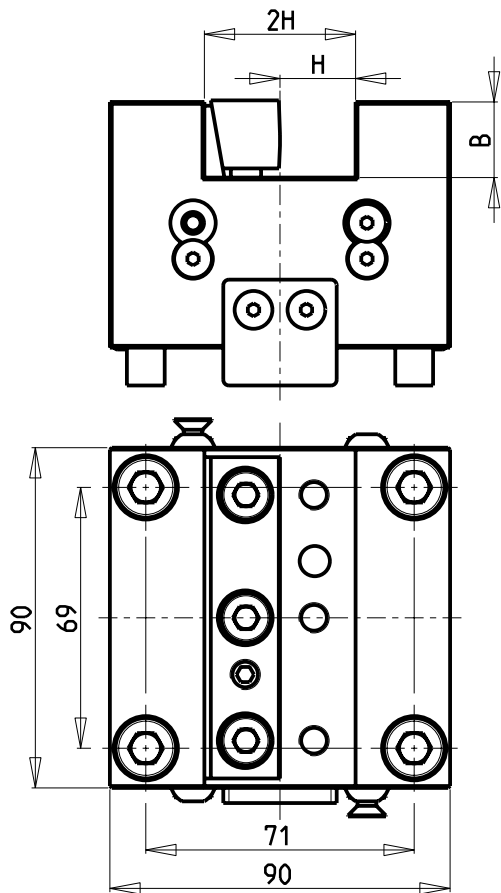
M.T. srl

Via Casino Albini 480
Tel. 0541/956034-957884
Fax 0541/956341
47842 S. GIOVANNI IN M. (RN)
e-mail: mtma@mtmarchetti.com
http://www.mtmarchetti.com

PRODUZIONE MODULI ROTANTI



PAGINA CCM510-1-00



Cod. MT	N°Utensili N°Tools N°Werkzeuge	Reversibile lato mandrino/contromandrino Reversible sub/main spindle side Umkehrbare Spindel-seite/ Gegenspindel-seite	Misure Dimensions Masse	B	H	
NKM0432000	1	X	mm	20	20	NEW
NKM0432500	1	X	mm	25	25	NEW

CHIAH CHYUN

MOD: CT2-52 / CT2-52YM / CT2-52Y2M(S) / CT3-52Y2M / CT2-65 / CT2-65YM / CT2-65Y2M(S) / CT3-65Y2M

PORTAUTENSILE ASSIALE SINGOLO

Axial single static tool

Axial Single-Werkzeughalter

M.T. srl

Via Casino Albini 480
Tel. 0541/956034-957884
Fax 0541/956341
47842 S. GIOVANNI IN M. (RN)
e-mail: mtma@mtmarchetti.com
http://www.mtmarchetti.com

PRODUZIONE MODULI ROTANTI



PAGINA CCM552-1-00