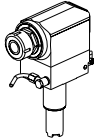
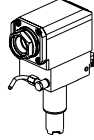

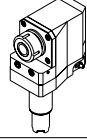
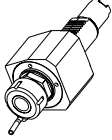
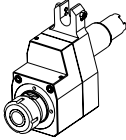
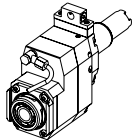


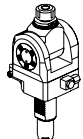
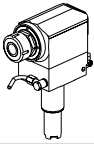
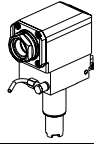
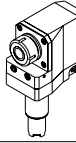
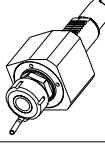
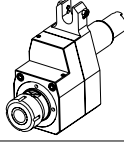
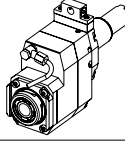
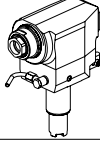
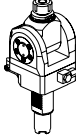


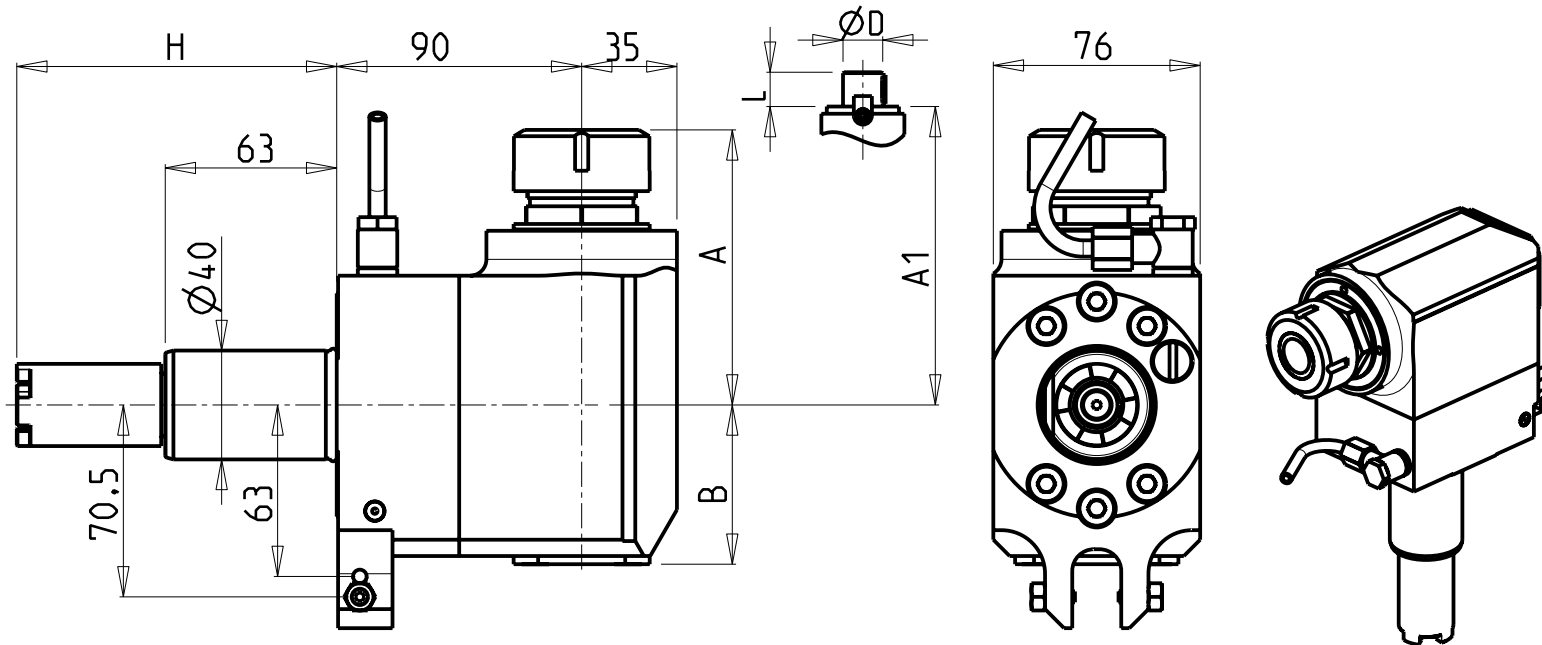
		PAGINA Page Seite
MODULO MOTORIZZATO RADIALE VD140 Radial driven tool VD140 Radial angetriebenes Werkzeug VD140		HAS013.1.20
MODULO MOTORIZZATO RADIALE MTSK VD140 Radial MTSK driven tool VD140 Radial MTSK angetriebenes Werkzeug VD140	 	HAS013.1.20.K
MODULO MOTORIZZATO RADIALE ARRETRATO VD140 Radial rear-set driven tool VD140 Radial angetriebenes Werkzeug zuruekversetzt VD140		HAS015.1.00
MODULO MOTORIZZATO ASSIALE VD140 Axial driven tool VD140 Axial angetriebenes Werkzeug VD140		HAS150.1.10
MODULO MOTORIZZATO ASSIALE DISASSATO 42mm VD140 Axial driven tool re-directed by 42mm VD140 Axial angetriebenes Werkzeug achsversetzt um 42mm VD140		HAS160.1.00
MODULO MOTORIZZ. ASSIALE MOLTIPLICATO I=1:2 DISASSATO 42mm VD140 Axial geared-up I=1:2 driven tool re-directed by 42mm VD140 Axial angetriebenes Werkzeug uebersetzt I=1:2 achsversetzt um 42mm VD140	 	HAS160.1.20
MODULO MOTORIZZATO RADIALE MOLTIPLICATO I=1:2 VD140 Radial geared-up I=1:2 driven tool VD140 Radial angetriebenes Werkzeug uebersetzt I=1:2 VD140		HAS203.1.10
MODULO MOTORIZZATO ORIENTABILE 0-90° VD140 0-90° adjustable angle driven tool VD140 Angetriebenes Werkzeug schwenkbar 0-90° VD140		HAS330.1.00

		PAGINA Page Seite
<p>MODULO MOTORIZZATO RADIALE VDI40 Radial driven tool VDI40 Radial angetriebenes Werkzeug VDI40</p>		HAS013.2.20
<p>MODULO MOTORIZZATO RADIALE MTSK VDI40 Radial MTSK driven tool VDI40 Radial MTSK angetriebenes Werkzeug VDI40</p>		HAS013.2.20.K NEW
<p>MODULO MOTORIZZATO RADIALE ARRETRATO VDI40 Radial rear-set driven tool VDI40 Radial angetriebenes Werkzeug zuruekversetzt VDI40</p>		HAS015.2.00
<p>MODULO MOTORIZZATO ASSIALE VDI40 Axial driven tool VDI40 Axial angetriebenes Werkzeug VDI40</p>		HAS150.2.10
<p>MODULO MOTORIZZATO ASSIALE DISASSATO 42mm VDI40 Axial driven tool re-directed by 42mm VDI40 Axial angetriebenes Werkzeug achsversetzt um 42mm VDI40</p>		HAS160.2.00
<p>MODULO MOTORIZZ. ASSIALE MOLTIPLICATO I=1:2 DISASSATO 42mm VDI40 Axial geared-up I=1:2 driven tool re-directed by 42mm VDI40 Axial angetriebenes Werkzeug uebersetzt I=1:2 achsversetzt um 42mm VDI40</p>		HAS160.2.20 NEW
<p>MODULO MOTORIZZATO RADIALE MOLTIPLICATO I=1:2 VDI40 Radial geared-up I=1:2 driven tool VDI40 Radial angetriebenes Werkzeug uebersetzt I=1:2 VDI40</p>		HAS203.2.10
<p>MODULO MOTORIZZATO ORIENTABILE 0-90° VDI40 0-90° adjustable angle driven tool VDI40 Angetriebenes Werkzeug schwenkbar 0-90° VDI40</p>		HAS330.2.00

		PAGINA Page Seite
MODULO MOTORIZZATO RADIALE VD140 Radial driven tool VD140 Radial angetriebenes Werkzeug VD140		HAS013.3.20
MODULO MOTORIZZATO RADIALE MTSK VD140 Radial MTSK driven tool VD140 Radial MTSK angetriebenes Werkzeug VD140	 NEW	HAS013.3.20.K
MODULO MOTORIZZATO RADIALE ARRETRATO VD140 Radial rear-set driven tool VD140 Radial angetriebenes Werkzeug zuruekversetzt VD140		HAS015.3.00
MODULO MOTORIZZATO ASSIALE VD140 Axial driven tool VD140 Axial angetriebenes Werkzeug VD140		HAS150.3.10
MODULO MOTORIZZATO ASSIALE DISASSATO 42mm VD140 Axial driven tool re-directed by 42mm VD140 Axial angetriebenes Werkzeug achsversetzt um 42mm VD140		HAS160.3.00
MODULO MOTORIZZ. ASSIALE MOLTIPLICATO I=1:2 DISASSATO 42mm VD140 Axial geared-up I=1:2 driven tool re-directed by 42mm VD140 Axial angetriebenes Werkzeug uebersetzt I=1:2 achsversetzt um 42mm VD140	 NEW	HAS160.3.20
MODULO MOTORIZZATO RADIALE MOLTIPLICATO I=1:2 VD140 Radial geared-up I=1:2 driven tool VD140 Radial angetriebenes Werkzeug uebersetzt I=1:2 VD140	 NEW	HAS203.3.10
MODULO MOTORIZZATO ASSIALE BISPORGENTE DISASSATO 160mm VD140 Axial rear-set opposite face twin driven tool re-directed by 160mm VD140 Axial angetriebenes Werkzeug halb vospringend achsversetzt um 160mm VD140	 NEW	HAS243.3.10
MODULO MOTORIZZATO RADIALE 2 USCITE IN Y VD140 Radial single side twin head driven tool in Y VD140 Radial angetriebenes Werkzeug 2 Ausgaenge in Y VD140		HAS263.3.10
MODULO MOTORIZZATO ORIENTABILE 0-90° VD140 0-90° adjustable angle driven tool VD140 Angetriebenes Werkzeug schwenkbar 0-90° VD140		HAS330.3.00

ATTENZIONE - ATTENTION - ACHTUNG

- Per lo smontaggio degli utensili utilizzare sempre la chiave di contrasto come indicato nel manuale d'uso.
- For disassembly of the tools use always the contrast key as mentioned in the user instructions.
- Fuer das Abmontieren der Werkzeuge immer den Gegenschlüssel benutzen wie in der Bedienungsanleitung erwäehnt.



- Chiave inclusa
- Key included
- Schlüssel inbegriffen

Cod. MT	Mandrino Spindle Spindel	I	RPM	Coppia Max Max Torque Max Drehmoment	Lubrificazione int. Coolant through Innenkühlung	Lubrificazione est. Ext. coolant Aussenkühlung	A	A1	B	H	Tipo Torretta Turret type Revolver typ	CHIAVI NON INCLUSE Keys not included Schlüssel nicht einbegriffen	
HAS0130132	ER32	1:1	4000	70Nm		X	101.1	-	58.5	104.85	VDI STANDARD	CHUB41	CHSTER32
HAS0130232	ER32	1:1	4000	70Nm	P=70bar	X	101.1	-	82	104.85	VDI STANDARD	CHUB41	CHSTER32
HAS0132219	Ø22x19	1:1	4000	70Nm		X	-	78.5	58.5	104.85	VDI STANDARD	CHUB41	CH_VTCROCE_M10 ▪
HAS0132721	Ø27x21	1:1	4000	70Nm		X	-	78.5	58.5	104.85	VDI STANDARD	CHUB41	CH_VTCROCE_M12 ▪
HAS0140132	ER32	1:1	4000	70Nm		X	101.1	-	58.5	117.55	HYBRID TURRET	CHUB41	CHSTER32
HAS0140232	ER32	1:1	4000	70Nm	P=70bar	X	101.1	-	82	117.55	HYBRID TURRET	CHUB41	CHSTER32
HAS0142219	Ø22x19	1:1	4000	70Nm		X	-	78.5	58.5	117.55	HYBRID TURRET	CHUB41	CH_VTCROCE_M10 ▪
HAS0142721	Ø27x21	1:1	4000	70Nm		X	-	78.5	58.5	117.55	HYBRID TURRET	CHUB41	CH_VTCROCE_M12 ▪

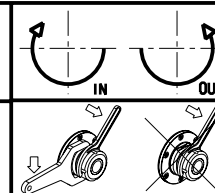
HAAS

MOD: SL10/20/30

MODULO MOTORIZZATO RADIALE VD140

Radial driven tool VD140

Radial angetriebenes Werkzeug VD140



M.T. srl

Via Casino Albini 480
Tel. 0541/956034-957884

Fax 0541/956341

47842 S. GIOVANNI IN M. (RN)

e-mail: mtma@mtmarchetti.com

http://www.mtmarchetti.com

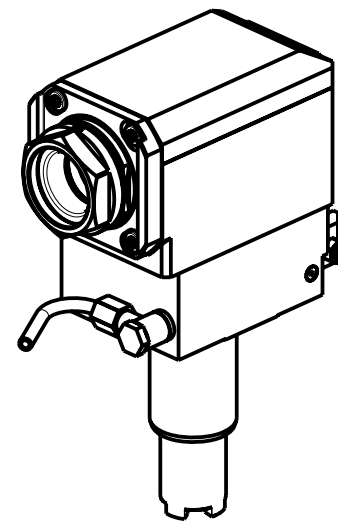
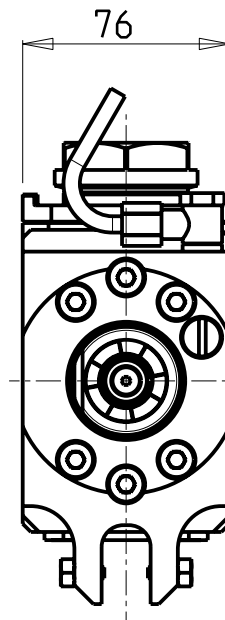
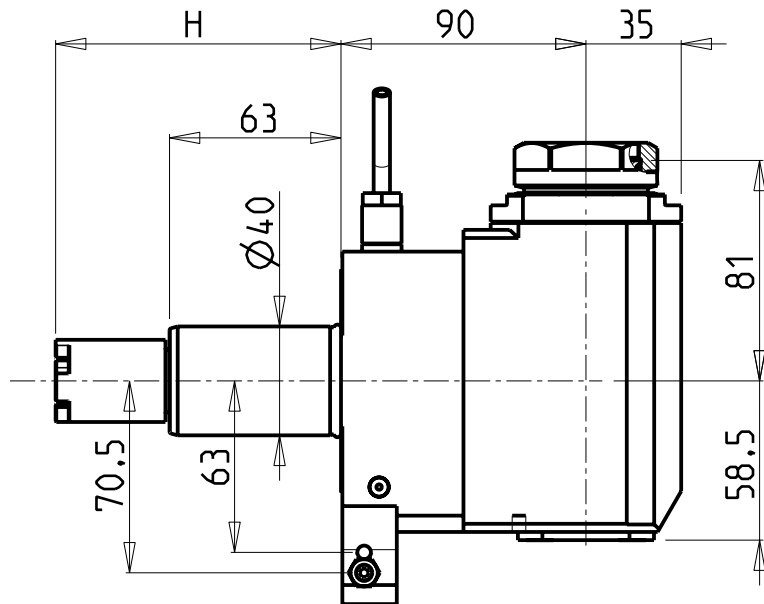
PRODUZIONE MODULI ROTANTI



PAGINA HAS013-1-20

ATTENZIONE - ATTENTION - ACHTUNG

- Per lo smontaggio degli utensili utilizzare sempre la chiave di contrasto come indicato nel manuale d'uso.
- For disassembly of the tools use always the contrast key as mentioned in the user instructions.
- Fuer das Abmontieren der Werkzeuge immer den Gegenschlüssel benutzen wie in der Bedienungsanleitung erwäehnt.



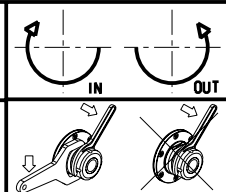
PER PORTAUTENSILI MODULARI MTSK-40 VEDI PAG. TBL300-1-40
 FOR MTSK-40 QUIK CHANGE TOOLHOLDERS CLAMPINGS SEE PAGE TBL300-1-40
 FUER MTSK-40 MODULARE WERKZEUGAUFNAHMEN SIEHE SEITE TBL300-1-40

Cod. MT	Mandrino Spindle Spindel	I	RPM	Coppia Max Max Torque Max Drehmoment	Lubrificazione est. Ext. coolant Aussenkuehlung	H	Tipo Torretta Turret type Revolver typ	CHIAVI NON INCLUSE Keys not included Schluesssel nicht einbegriffen	
HAS0270140	MTSK-40	1:1	4000	70Nm	X	104.85	VDI STANDARD	CHUB46	OKU0650004 •
HAS0280140	MTSK-40	1:1	4000	70Nm	X	117.55	HYBRID TURRET	CHUB46	OKU0650004 •

- Chiave inclusa
- Key included
- Schluesssel inbegriffen

NEW
NEW

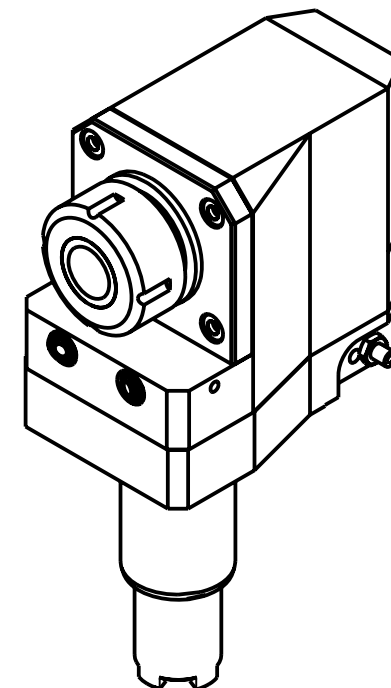
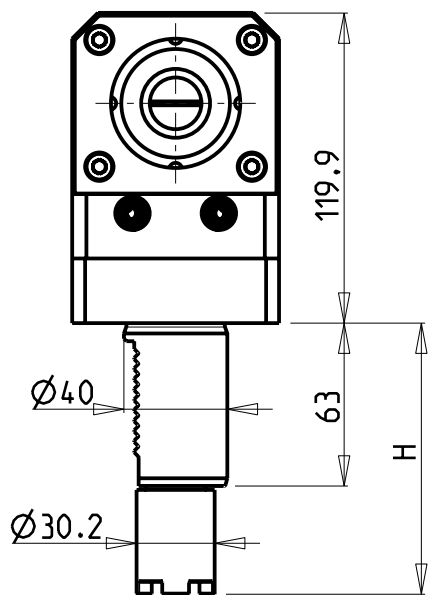
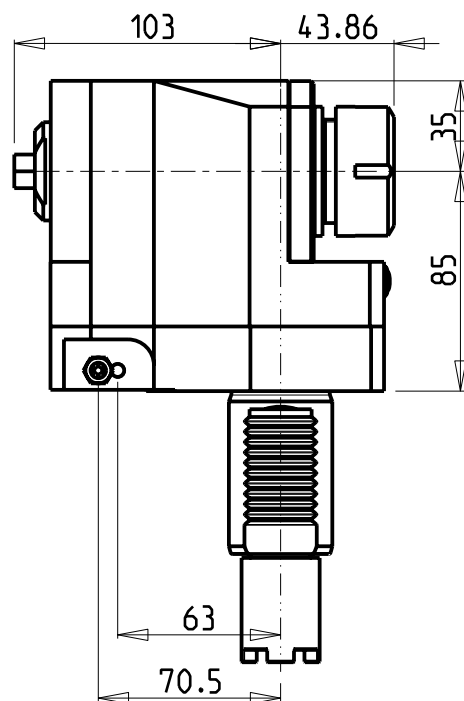
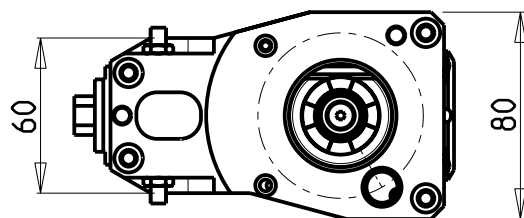
HAAS
 MOD: SL10/20/30
 MODULO MOTORIZZATO RADIALE MTSK VDI40
 Radial MTSK driven tool VDI40
 Radial MTSK angetriebenes Werkzeug VDI40



M.T. srl
 Via Casino Albini 480
 Tel. 0541/956034-957884
 Fax 0541/956341
 47842 S. GIOVANNI IN M. (RN)
 e-mail: mtma@mtmarchetti.com
 http://www.mtmarchetti.com

PRODUZIONE MODULI ROTANTI

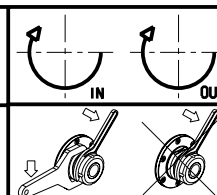
PAGINA HAS013-1-20-K



Cod. MT	Mandrino Spindle Spindel	I	RPM	Coppia Max Max Torque Max Drehmoment	Lubrificazione est. Ext. coolant Ausseukuehlung	H	Tipo Torretta Turret Type Revolver Typ	CHIAVI NON INCLUSE Keys not included Schluessel nicht einbegriffen	
HAS0030232	ER32	1:1	4000	70Nm	X	104.85	VDI STANDARD	CHUB13	CHSTER32
HAS0040232	ER32	1:1	4000	70Nm	X	117.55	HYBRID TURRET	CHUB13	CHSTER32

HAAS
MOD: SL10/20/30

MODULO MOTORIZZATO RADIALE ARRETRATO VDI40
Radial rear-set driven tool VDI40
Radial angetriebenes Werkzeug zurueckversetzt VDI40

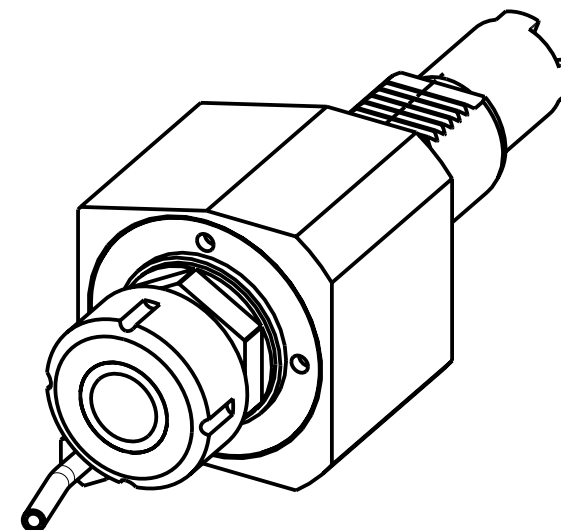
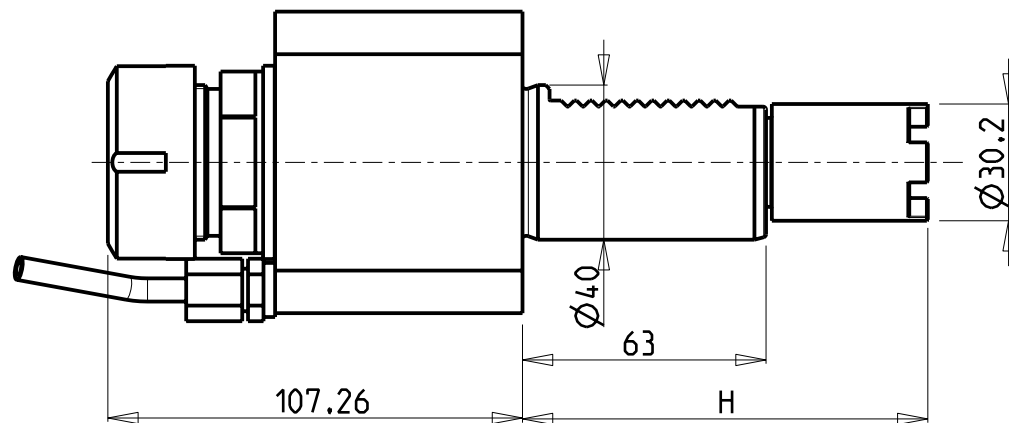
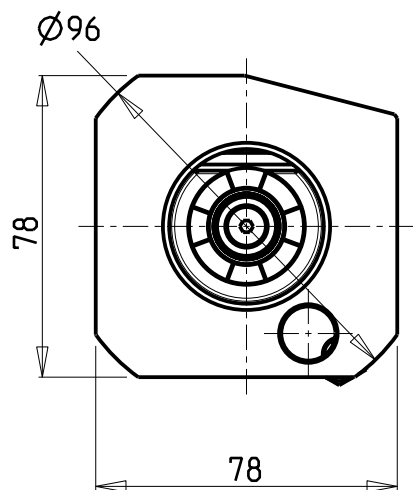


M.T. srl
Via Casino Albini 480
Tel. 0541/956034-957884
Fax 0541/956341
47842 S. GIOVANNI IN M. (RN)
e-mail: mtma@mtmarchetti.com
http://www.mtmarchetti.com

PRODUZIONE MODULI ROTANTI



PAGINA HAS015-1-00



Cod. MT	Mandrino Spindle Spindel	I	RPM	Coppia Max Max Torque Max Drehmoment	Lubrificazione est. Ext. coolant Aussenkühlung	H	Tipo Torretta Turret Type Revolver Typ	CHIAVI NON INCLUSE Keys not included Schlüssel nicht einbegriffen	
								CHUB41	CHSTER32
HAS0010232	ER32	1:1	4000	70Nm	X	104.85	VDI STANDARD	CHUB41	CHSTER32
HAS0020232	ER32	1:1	4000	70Nm	X	117.55	HYBRID TURRET	CHUB41	CHSTER32

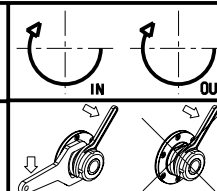
HAAS

MOD: SL10/20/30

MODULO MOTORIZZATO ASSIALE VDI40

Axial driven tool VDI40

Axial angetriebenes Werkzeug VDI40



M.T. srl

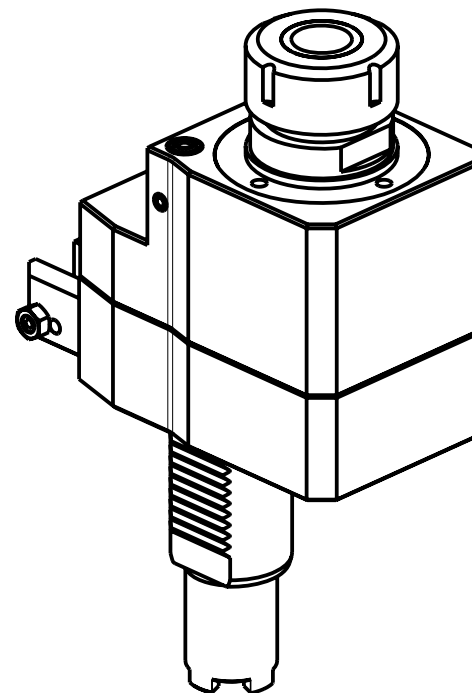
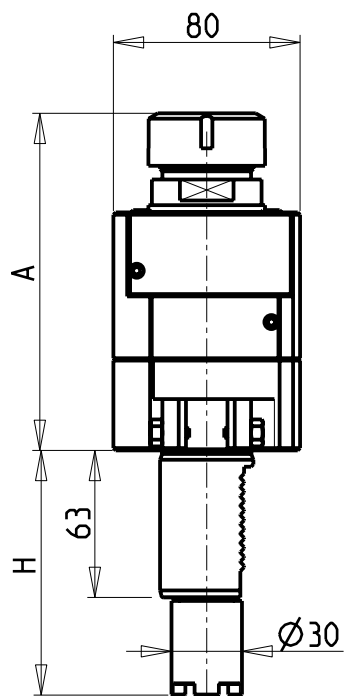
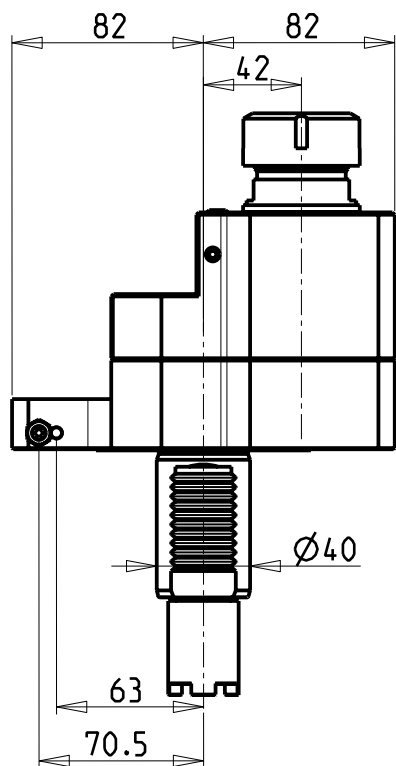
Via Casino Albini 480
Tel. 0541/956034-957884
Fax 0541/956341

47842 S. GIOVANNI IN M. (RN)
e-mail: mtma@mtmarchetti.com
http://www.mtmarchetti.com

PRODUZIONE MODULI ROTANTI



PAGINA HAS150-1-10



Cod. MT	Mandrino Spindle Spindel	I	RPM	Coppia Max Max Torque Max Drehmoment	Lubrificazione int. Coolant through Innenkühlung	Lubrificazione est. Ext. coolant Aussenkühlung	A	H	Tipo Torretta Turret Type Revolver Typ	CHIAVI NON INCLUSE Keys not included Schlüsselnicht einbegriffen	
HAS0070032	ER32	1:1	4000	70Nm		X	144.66	104.85	VDI STANDARD	CHUB41	CHSTER32
HAS0071132	ER32	1:1	4000	70Nm	P=30bar		164.96	104.85	VDI STANDARD	CHUB38	CHSTER32
HAS0072132	ER32	2:1	2000	100Nm		X	144.66	104.85	VDI STANDARD	CHUB41	CHSTER32
HAS0074232	ER32	2:1	2000	100Nm	P=30bar		164.96	104.85	VDI STANDARD	CHUB38	CHSTER32
HAS0080032	ER32	1:1	4000	70Nm		X	144.66	117.55	HYBRID TURRET	CHUB41	CHSTER32
HAS0081132	ER32	1:1	4000	70Nm	P=30bar		164.96	117.55	HYBRID TURRET	CHUB38	CHSTER32
HAS0082132	ER32	2:1	2000	100Nm		X	144.66	117.55	HYBRID TURRET	CHUB41	CHSTER32
HAS0084232	ER32	2:1	2000	100Nm	P=30bar		164.96	117.55	HYBRID TURRET	CHUB38	CHSTER32

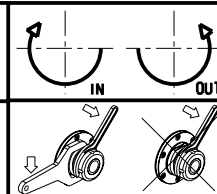
HAAS

MOD: SL10/20/30

MODULO MOTORIZZATO ASSIALE DISASSATO 42mm VDI40

Axial driven tool re-directed by 42mm VDI40

Axial angetriebenes Werkzeug achsversetzt um 42mm VDI40



M.T. srl

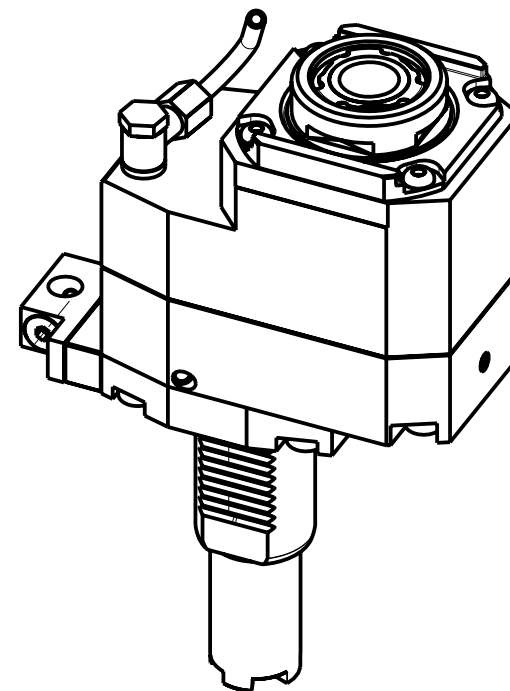
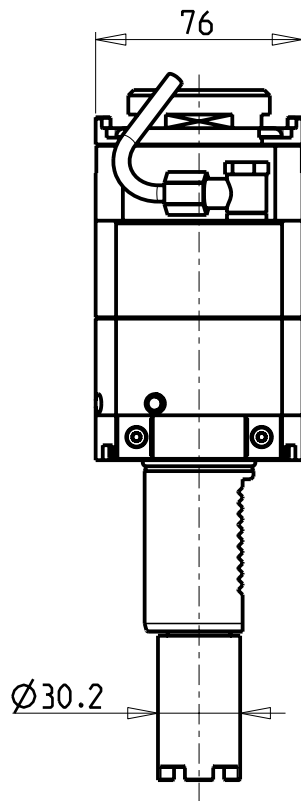
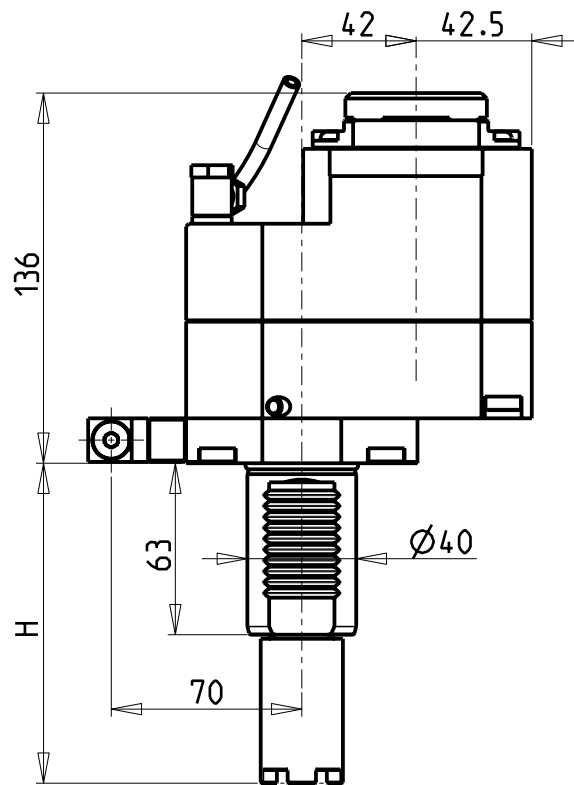
Via Casino Albini 480
Tel. 0541/956034-957884
Fax 0541/956341

47842 S. GIOVANNI IN M. (RN)
e-mail: mtma@mtmarchetti.com
http://www.mtmarchetti.com

PRODUZIONE MODULI ROTANTI



PAGINA HAS160-1-00



- Chiave inclusa
- Key included
- Schluessel inbegriffen

Cod. MT	Mandrino Spindle Spindel	I	RPM	Coppia Max Max Torque Max Drehmoment	Lubrificazione int. Coolant through Innenkühlung	Lubrificazione est. Ext. coolant Aussenkühlung	H	Tipo Torretta Turret Type Revolver Typ	CHIAVI NON INCLUSE Keys not included Schluessel nicht einbegriffen			
HAS0307132	ERA32	1:2	8000	45Nm	-	X	104.85	VDI STANDARD	C HUB30	CHTAER32Z	OKU0650004	NEW
HAS0307232	ERA32	1:2	8000	45Nm	P=30bar	X	104.85	VDI STANDARD	C HUB30	CHTAER32Z	OKU0650004	NEW
HAS0317132	ERA32	1:2	8000	45Nm	-	X	117.55	HYBRID TURRET	C HUB30	CHTAER32Z	OKU0650004	NEW
HAS0317232	ERA32	1:2	8000	45Nm	P=30bar	X	117.55	HYBRID TURRET	C HUB30	CHTAER32Z	OKU0650004	NEW

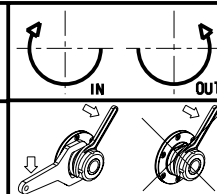
HAAS

MOD: SL10/20/30

MODULO MOTORIZZATO ASSIALE MOLTIPLICATO I=1:2 DISASSATO 42mm VDI40

Axial geared-up I=1:2 driven tool re-directed by 42mm VDI40

Axial angetriebenes Werkzeug uebersetzt I=1:2 achsversetzt um 42mm VDI40



M.T. srl

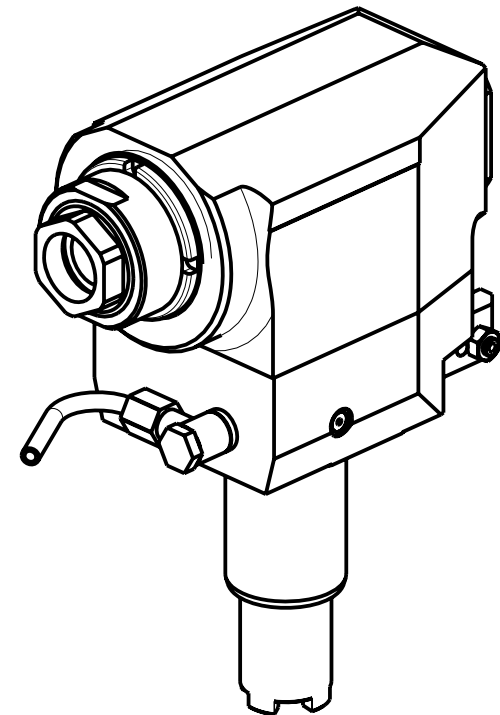
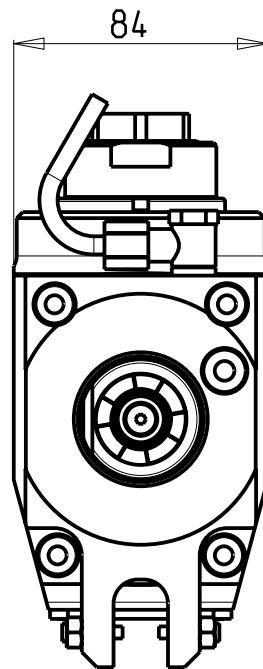
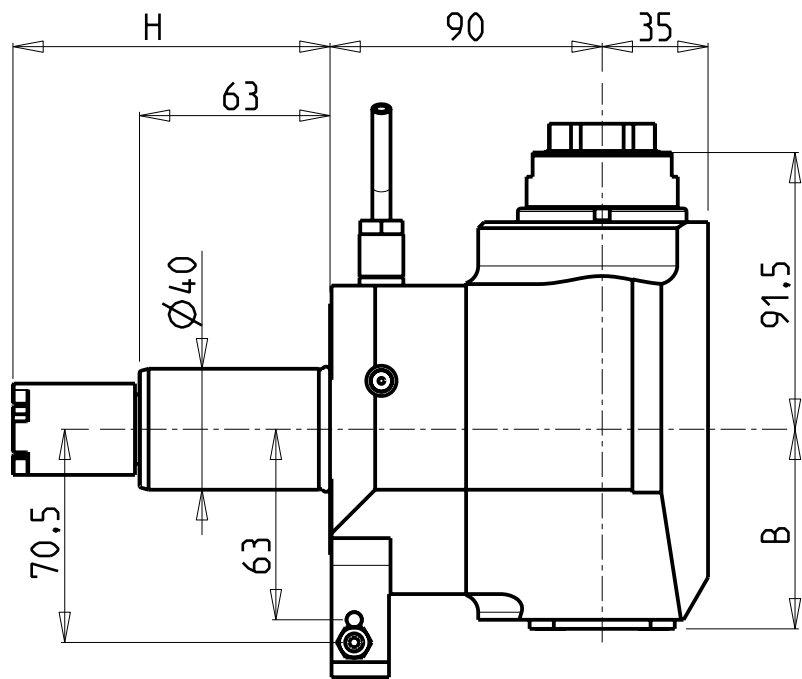
Via Casino Albini 480
Tel. 0541/956034-957884
Fax 0541/956341

47842 S. GIOVANNI IN M. (RN)
e-mail: mtma@mtmarchetti.com
http://www.mtmarchetti.com

PRODUZIONE MODULI ROTANTI



PAGINA HAS160-1-20



Cod. MT	Mandrino Spindle Spindel	I	RPM	Coppia Max Max Torque Max Drehmoment	Lubrificazione int. Coolant through Innenkühlung	Lubrificazione est. Ext. coolant Aussenkühlung	B	H	Tipo Torretta Turret type Revolver typ	CHIAVI NON INCLUSE Keys not included Schlüssel nicht einbegriffen	
										CHUB41	CHUB32
HAS0150132	ERA32	1:2	8000	30Nm		X	66	104.85	VDI STANDARD	CHUB41	CHUB32
HAS0150232	ERA32	1:2	8000	30Nm	P=70bar	X	76	104.85	VDI STANDARD	CHUB41	CHUB32
HAS0160132	ERA32	1:2	8000	30Nm		X	66	117.55	HYBRID TURRET	CHUB41	CHUB32
HAS0160232	ERA32	1:2	8000	30Nm	P=70bar	X	76	117.55	HYBRID TURRET	CHUB41	CHUB32

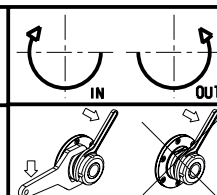
HAAS

MOD: SL10/20/30

MODULO MOTORIZZATO RADIALE MOLTIPLICATO I=1:2 VDI40

Radial geared-up I=1:2 driven tool VDI40

Radial angetriebenes Werkzeug uebersezt I=1:2 VDI40



M.T. srl

Via Casino Albini 480
Tel. 0541/956034-957884

Fax 0541/956341

47842 S. GIOVANNI IN M. (RN)

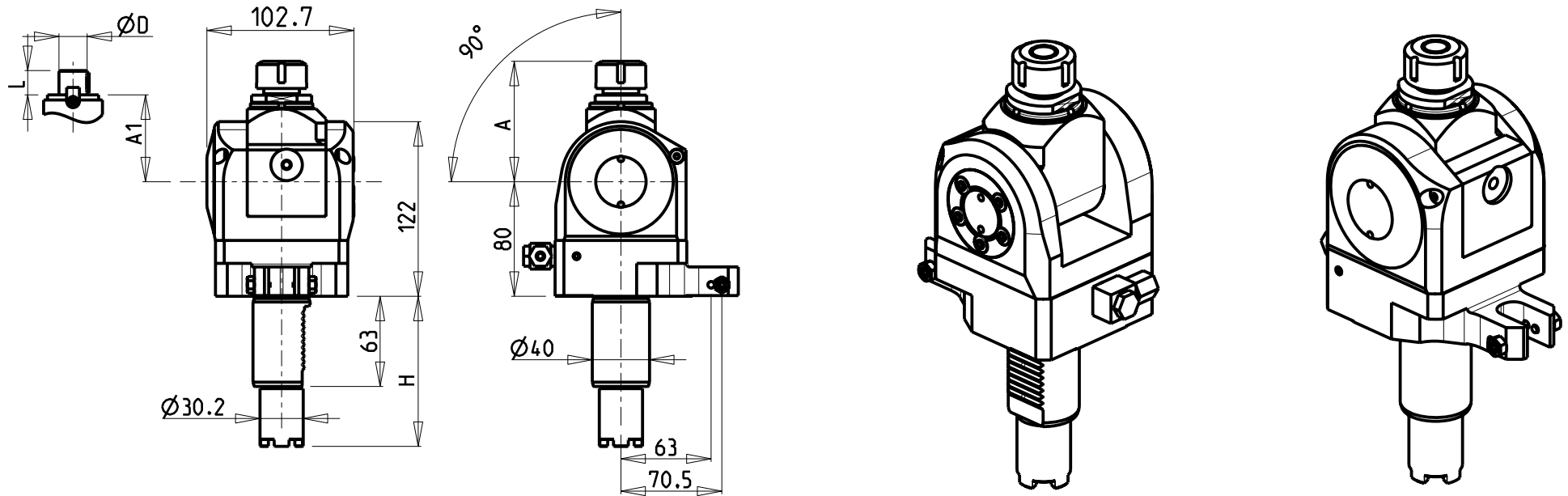
e-mail: mtma@mtmarchetti.com

http://www.mtmarchetti.com

PRODUZIONE MODULI ROTANTI



PAGINA HAS203-1-10



Cod. MT	Mandrino Spindle Spindel	I	RPM	Coppia Max Max Torque Max Drehmoment	Lubrificazione est. Ext. coolant Ausseukuehlung	A	A1	D	L	H	Tipo Torretta Turret Type Revolver Typ	CHIAVI INCLUSE Keys included Schluessel inbegriffen	
HAS0050020	ER20	1:1	4000	40Nm	X	84.16	-	-	-	104.85	VDI STANDARD	CHUB36	CHSTER20
HAS0060020	ER20	1:1	4000	40Nm	X	84.16	-	-	-	117.55	HYBRID TURRET	CHUB36	CHSTER20
HAS0050025	ER25	1:1	4000	40Nm	X	85.66	-	-	-	104.85	VDI STANDARD	CHUB36	CHSTER25
HAS0060025	ER25	1:1	4000	40Nm	X	85.66	-	-	-	117.55	HYBRID TURRET	CHUB36	CHSTER25
HAS0051617	Ø16x17	1:1	4000	40Nm	X	-	65	16	17	104.85	VDI STANDARD	CHUB36	CH_VTCROCE_M08
HAS0061617	Ø16x17	1:1	4000	40Nm	X	-	65	16	17	117.55	HYBRID TURRET	CHUB36	CH_VTCROCE_M08
HAS0052219	Ø22x19	1:1	4000	40Nm	X	-	66	22	19	104.85	VDI STANDARD	CHUB36	CH_VTCROCE_M10
HAS0062219	Ø22x19	1:1	4000	40Nm	X	-	66	22	22	117.55	HYBRID TURRET	CHUB36	CH_VTCROCE_M10
HAS0051905	Ø3/4"x3/4"	1:1	4000	40Nm	X	-	65	3/4"	3/4"	104.85	VDI STANDARD	CHUB36	CH_VTCROCE_M08
HAS0061905	Ø3/4"x3/4"	1:1	4000	40Nm	X	-	65	3/4"	3/4"	117.55	HYBRID TURRET	CHUB36	CH_VTCROCE_M08

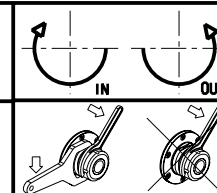
HAAS

MOD: SL10/20/30

MODULO MOTORIZZATO ORIENTABILE 0-90° VDI40

0-90° adjustable angle driven tool VDI40

Angetriebenes Werkzeug schwenkbar 0-90° VDI40



M.T. srl

Via Casino Albini 480
Tel. 0541/956034-957884

Fax 0541/956341

47842 S. GIOVANNI IN M. (RN)

e-mail: mtma@mtmarchetti.com

http://www.mtmarchetti.com

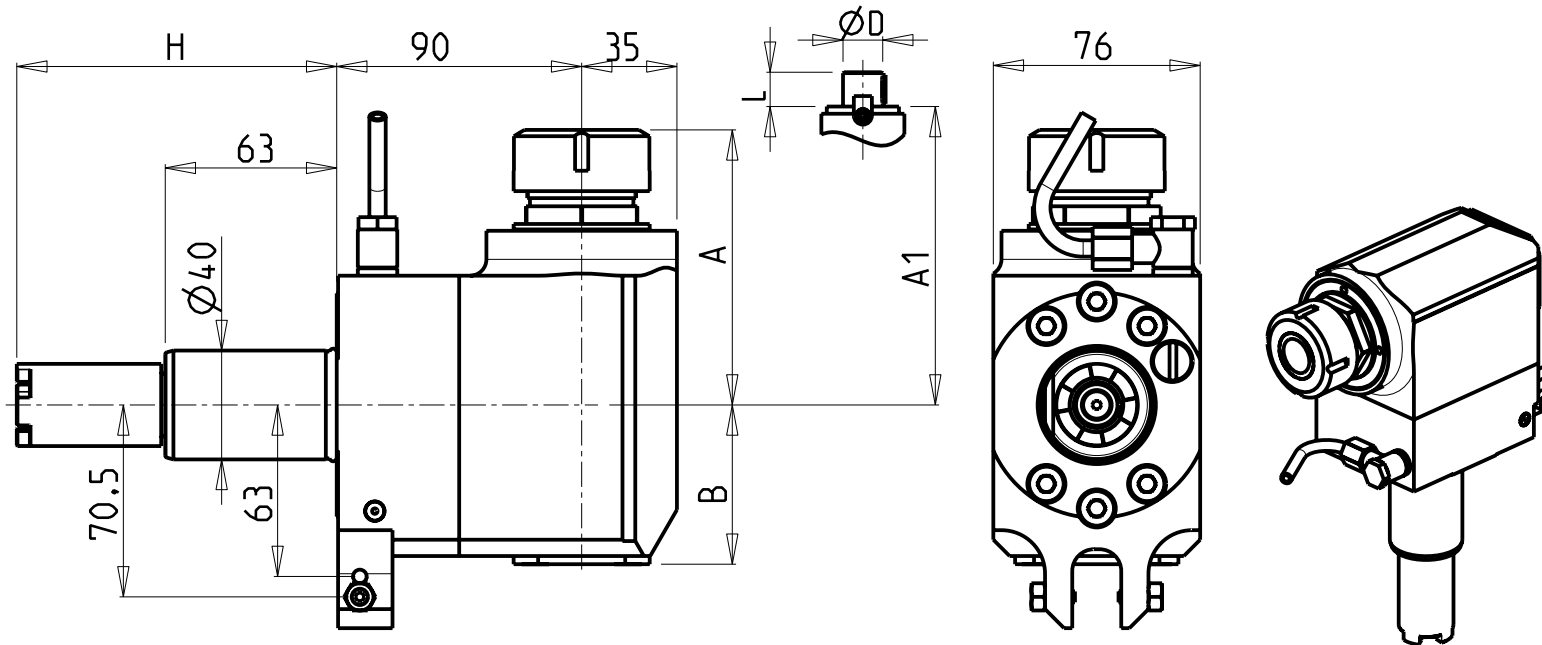
PRODUZIONE MODULI ROTANTI



PAGINA HAS330-1-00

ATTENZIONE - ATTENTION - ACHTUNG

- Per lo smontaggio degli utensili utilizzare sempre la chiave di contrasto come indicato nel manuale d'uso.
- For disassembly of the tools use always the contrast key as mentioned in the user instructions.
- Fuer das Abmontieren der Werkzeuge immer den Gegenschlüssel benutzen wie in der Bedienungsanleitung erwäehnt.



- Chiave inclusa
- Key included
- Schlüssel inbegriffen

Cod. MT	Mandrino Spindle Spindel	I	RPM	Coppia Max Max Torque Max Drehmoment	Lubrificazione int. Coolant through Innenkühlung	Lubrificazione est. Ext. coolant Aussenkühlung	A	A1	B	H	Tipo Torretta Turret type Revolver typ	CHIAVI NON INCLUSE Keys not included Schlüssel nicht einbegriffen	
HAS0140132	ER32	1:1	4000	70Nm		X	101.1	-	58.5	117.55	VDI STANDARD	CHUB41	CHSTER32
HAS0140232	ER32	1:1	4000	70Nm	P=70bar	X	101.1	-	82	117.55	VDI STANDARD	CHUB41	CHSTER32
HAS0142219	Ø22x19	1:1	4000	70Nm		X	-	78.5	58.5	117.55	VDI STANDARD	CHUB41	CH_VTCROCE_M10 ▪
HAS0142721	Ø27x21	1:1	4000	70Nm		X	-	78.5	58.5	117.55	VDI STANDARD	CHUB41	CH_VTCROCE_M12 ▪
HAS0180132	ER32	1:1	4000	70Nm		X	101.1	-	58.5	130.25	HYBRID TURRET	CHUB41	CHSTER32
HAS0180232	ER32	1:1	4000	70Nm	P=70bar	X	101.1	-	82	130.25	HYBRID TURRET	CHUB41	CHSTER32
HAS0182219	Ø22x19	1:1	4000	70Nm		X	-	78.5	58.5	130.25	HYBRID TURRET	CHUB41	CH_VTCROCE_M10 ▪
HAS0182721	Ø27x21	1:1	4000	70Nm		X	-	78.5	58.5	130.25	HYBRID TURRET	CHUB41	CH_VTCROCE_M12 ▪

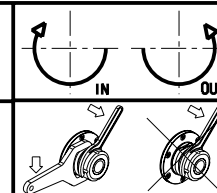
HAAS

MOD: SL40

MODULO MOTORIZZATO RADIALE VD140

Radial driven tool VD140

Radial angetriebenes Werkzeug VD140



M.T. srl

Via Casino Albini 480
Tel. 0541/956034-957884

Fax 0541/956341

47842 S. GIOVANNI IN M. (RN)

e-mail: mtma@mtmarchetti.com

http://www.mtmarchetti.com

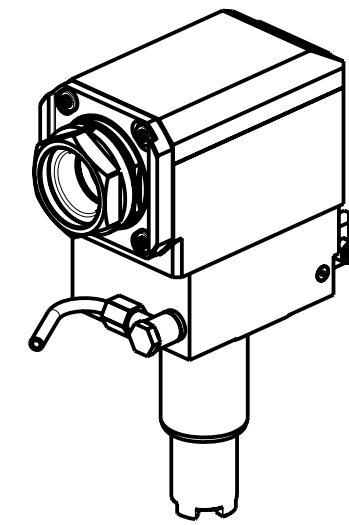
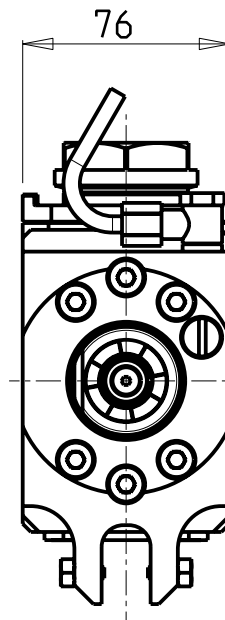
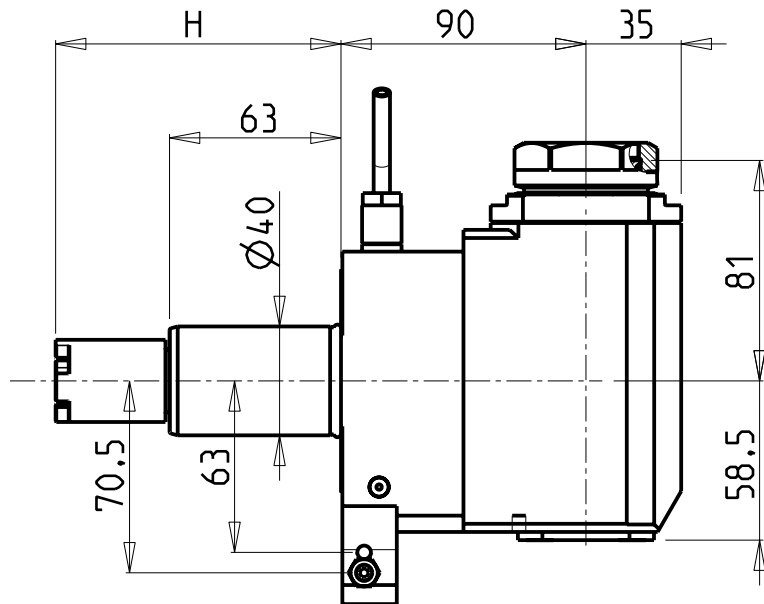
PRODUZIONE MODULI ROTANTI



PAGINA HAS013-2-20

ATTENZIONE - ATTENTION - ACHTUNG

- Per lo smontaggio degli utensili utilizzare sempre la chiave di contrasto come indicato nel manuale d'uso.
- For disassembly of the tools use always the contrast key as mentioned in the user instructions.
- Fuer das Abmontieren der Werkzeuge immer den Gegenschlüssel benutzen wie in der Bedienungsanleitung erwäehnt.



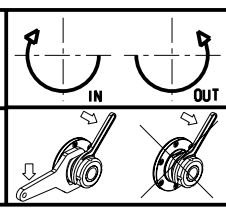
PER PORTAUTENSILI MODULARI MTSK-40 VEDI PAG. TBL300-1-40
 FOR MTSK-40 QUIK CHANGE TOOLHOLDERS CLAMPINGS SEE PAGE TBL300-1-40
 FUER MTSK-40 MODULARE WERKZEUGAUFNAHMEN SIEHE SEITE TBL300-1-40

Cod. MT	Mandrino Spindle Spindel	I	RPM	Coppia Max Max Torque Max Drehmoment	Lubrificazione est. Ext. coolant Aussenkuehlung	H	Tipo Torretta Turret type Revolver typ	CHIAVI NON INCLUSE Keys not included Schluesssel nicht einbegriffen	
HAS0280140	MTSK-40	1:1	4000	70Nm	X	117.55	VDI STANDARD	CHUB46	OKU0650004 •
HAS0260140	MTSK-40	1:1	4000	70Nm	X	130.25	HYBRID TURRET	CHUB46	OKU0650004 •

- Chiave inclusa
- Key included
- Schluesssel inbegriffen

NEW
NEW

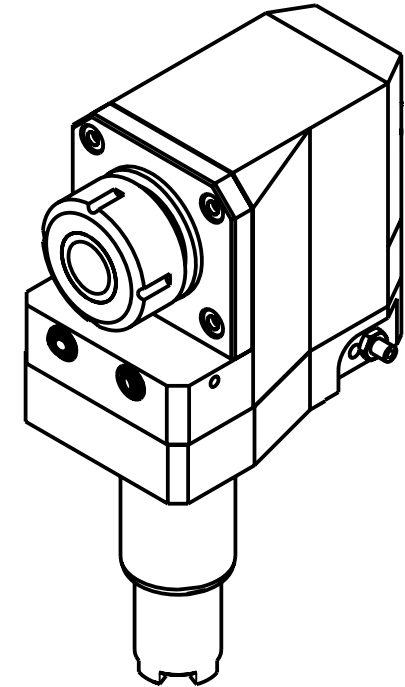
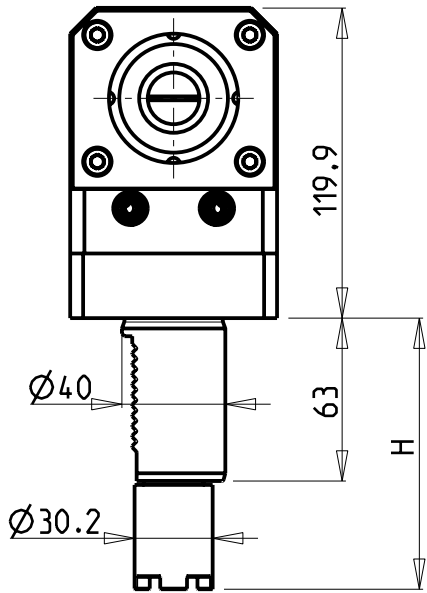
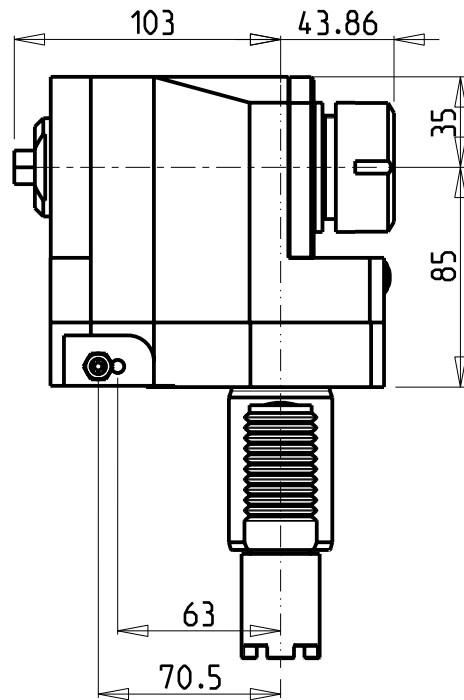
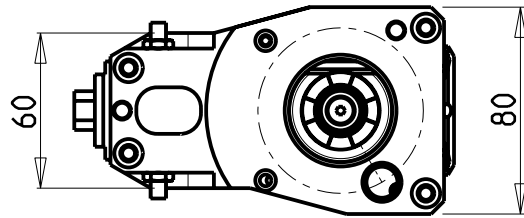
HAAS
 MOD: SL40
 MODULO MOTORIZZATO RADIALE MTSK VDI40
 Radial MTSK driven tool VDI40
 Radial MTSK angetriebenes Werkzeug VDI40



M.T. srl
 Via Casino Albini 480
 Tel. 0541/956034-957884
 Fax 0541/956341
 47842 S. GIOVANNI IN M. (RN)
 e-mail: mtma@mtmarchetti.com
 http://www.mtmarchetti.com

PRODUZIONE MODULI ROTANTI

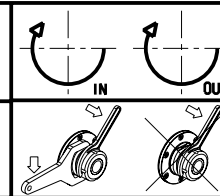
PAGINA HAS013-2-20-K



Cod. MT	Mandrino Spindle Spindel	I	RPM	Coppia Max Max Torque Max Drehmoment	Lubrificazione est. Ext. coolant Ausseukuehlung	H	Tipo Torretta Turret Type Revolver Typ	CHIAVI NON INCLUSE Keys not included Schluessel nicht einbegriffen	
HAS0040232	ER32	1:1	4000	70Nm	X	117.55	VDI STANDARD	CHUB13	CHSTER32
HAS0190232	ER32	1:1	4000	70Nm	X	130.25	HYBRID TURRET	CHUB13	CHSTER32

HAAS
MOD: SL40

MODULO MOTORIZZATO RADIALE ARRETRATO VDI40
Radial rear-set driven tool VDI40
Radial angetriebenes Werkzeug zurueckversetzt VDI40

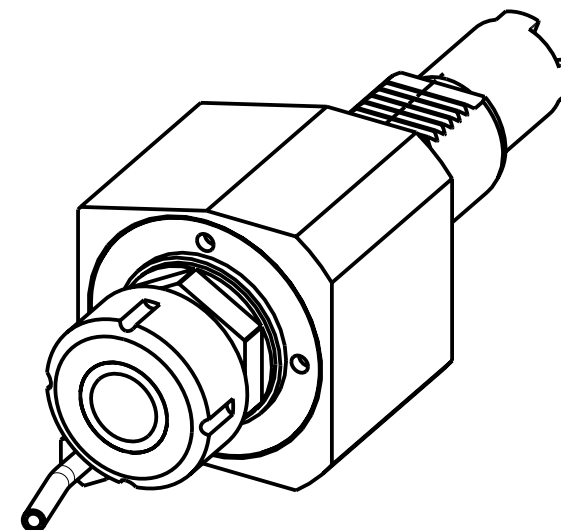
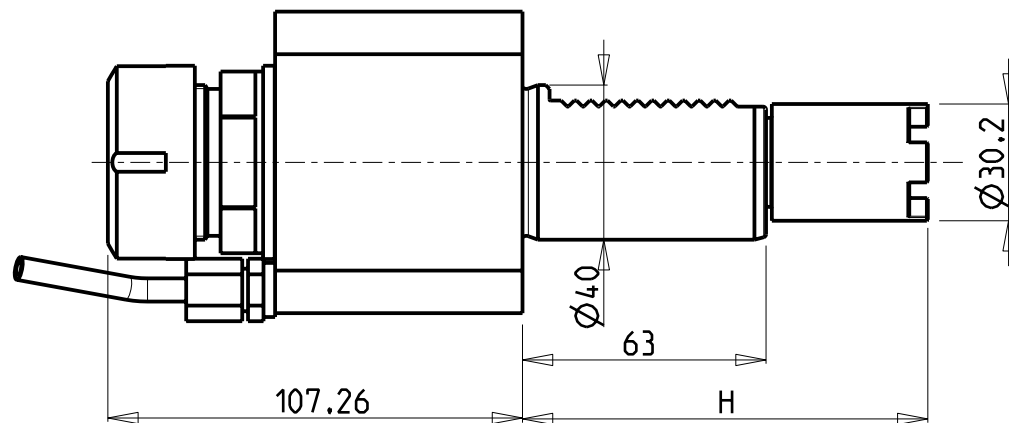
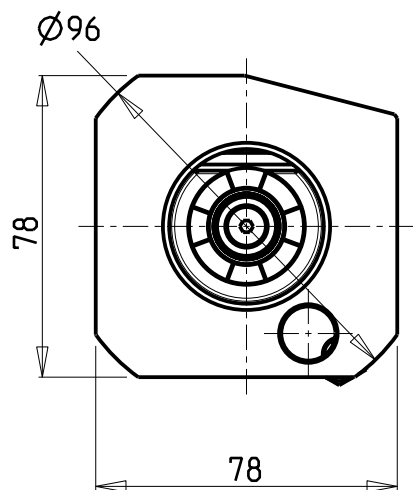


M.T. srl
Via Casino Albini 480
Tel. 0541/956034-957884
Fax 0541/956341
47842 S. GIOVANNI IN M. (RN)
e-mail: mtma@mtmarchetti.com
http://www.mtmarchetti.com

PRODUZIONE MODULI ROTANTI



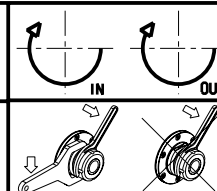
PAGINA HAS015-2-00



Cod. MT	Mandrino Spindle Spindel	I	RPM	Coppia Max Max Torque Max Drehmoment	Lubrificazione est. Ext. coolant Ausseinkühlung	H	Tipo Torretta Turret Type Revolver Typ	CHIAVI NON INCLUSE Keys not included Schlüssel nicht einbegriffen	
HAS0020232	ER32	1:1	4000	70Nm	X	117.55	VDI STANDARD	CHUB41	CHSTER32
HAS0170232	ER32	1:1	4000	70Nm	X	130.25	HYBRID TURRET	CHUB41	CHSTER32

HAAS
MOD: SL40

MODULO MOTORIZZATO ASSIALE VDI40
Axial driven tool VDI40
Axial angetriebenes Werkzeug VDI40



M.T. srl

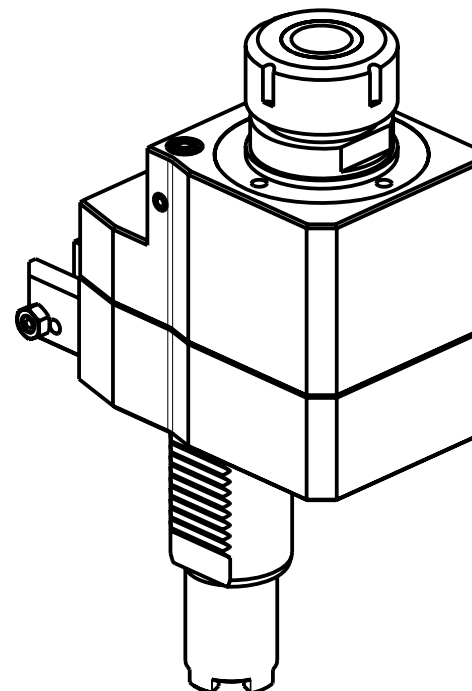
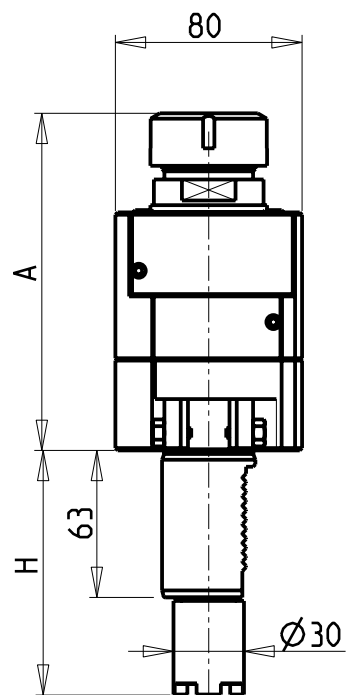
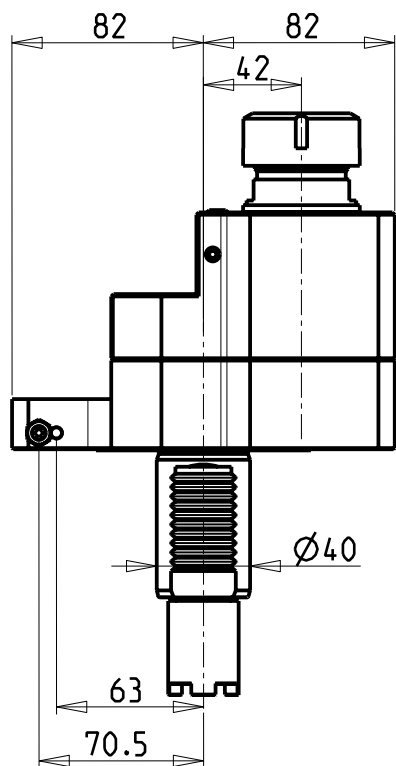
Via Casino Albini 480
Tel. 0541/956034-957884
Fax 0541/956341

47842 S. GIOVANNI IN M. (RN)
e-mail: mtma@mtmarchetti.com
http://www.mtmarchetti.com

PRODUZIONE MODULI ROTANTI



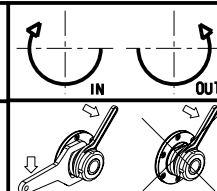
PAGINA HAS150-2-10



Cod. MT	Mandrino Spindle Spindel	I	RPM	Coppia Max Max Torque Max Drehmoment	Lubrificazione int. Coolant through Innenkühlung	Lubrificazione est. Ext. coolant Aussenkühlung	A	H	Tipo Torretta Turret Type Revolver Typ	CHIAVI NON INCLUSE Keys not included Schlüssel nicht einbegriffen	
HAS0080032	ER32	1:1	4000	70Nm		X	144.66	117.55	VDI STANDARD	CHUB41	CHSTER32
HAS0081132	ER32	1:1	4000	70Nm	P=30bar		164.96	117.55	VDI STANDARD	CHUB38	CHSTER32
HAS0082132	ER32	2:1	2000	100Nm		X	144.66	117.55	VDI STANDARD	CHUB41	CHSTER32
HAS0084232	ER32	2:1	2000	100Nm	P=30bar		164.96	117.55	VDI STANDARD	CHUB38	CHSTER32
HAS0200032	ER32	1:1	4000	70Nm		X	144.66	130.25	HYBRID TURRET	CHUB41	CHSTER32
HAS0201132	ER32	1:1	4000	70Nm	P=30bar		164.96	130.25	HYBRID TURRET	CHUB38	CHSTER32
HAS0202132	ER32	2:1	2000	100Nm		X	144.66	130.25	HYBRID TURRET	CHUB41	CHSTER32
HAS0204232	ER32	2:1	2000	100Nm	P=30bar		164.96	130.25	HYBRID TURRET	CHUB38	CHSTER32

HAAS
MOD: SL40

MODULO MOTORIZZATO ASSIALE DISASSATO 42mm VDI40
Axial driven tool re-directed by 42mm VDI40
Axial angetriebenes Werkzeug achsversetzt um 42mm VDI40



M.T. srl

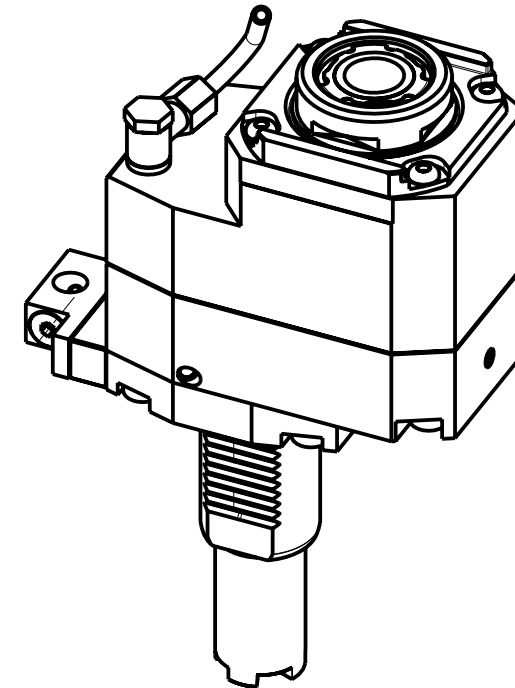
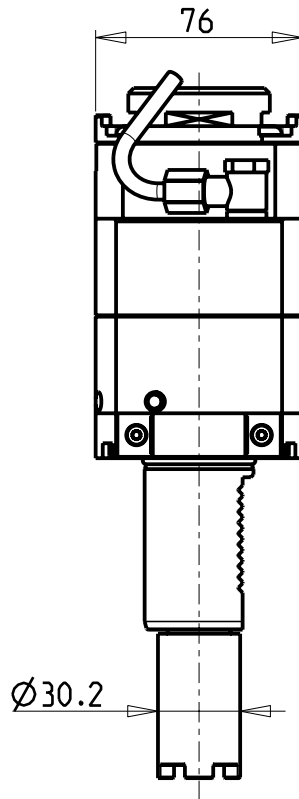
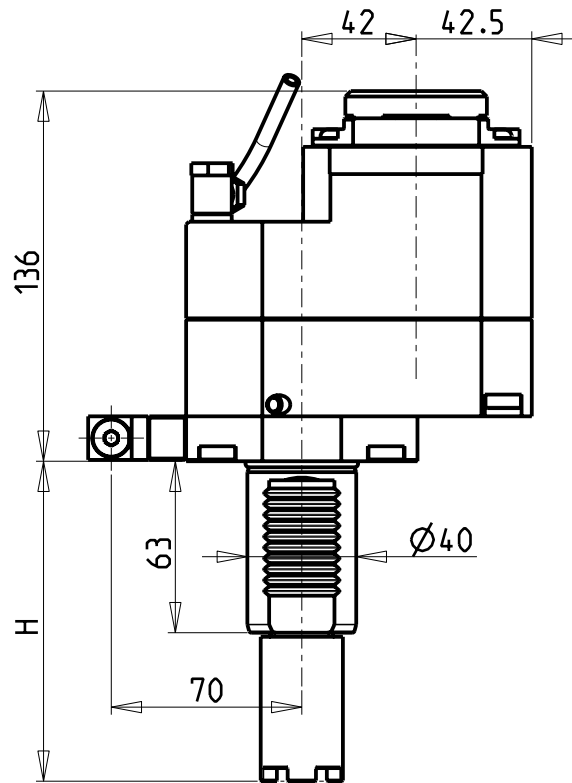
Via Casino Albini 480
Tel. 0541/956034-957884
Fax 0541/956341

47842 S. GIOVANNI IN M. (RN)
e-mail: mtma@mtmarchetti.com
http://www.mtmarchetti.com

PRODUZIONE MODULI ROTANTI



PAGINA HAS160-2-00

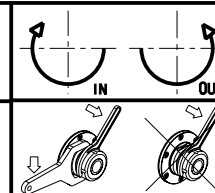


- Chiave inclusa
- Key included
- Schluessel inbegriffen

Cod. MT	Mandrino Spindle Spindel	I	RPM	Coppia Max Max Torque Max Drehmoment	Lubrificazione int. Coolant through Innenkühlung	Lubrificazione est. Ext. coolant Aussenkühlung	H	Tipo Torretta Turret Type Revolver Typ	CHIAVI NON INCLUSE Keys not included Schluessel nicht einbegriffen			
HAS0297132	ERA32	1:2	8000	45Nm	-	X	130.25	HYBRID TURRET	CHUB30	CHTAER32Z	OKU0650004	NEW
HAS0297232	ERA32	1:2	8000	45Nm	P=30bar	X	130.25	HYBRID TURRET	CHUB30	CHTAER32Z	OKU0650004	NEW
HAS0317132	ERA32	1:2	8000	45Nm	-	X	117.55	VDI STANDARD	CHUB30	CHTAER32Z	OKU0650004	NEW
HAS0317232	ERA32	1:2	8000	45Nm	P=30bar	X	117.55	VDI STANDARD	CHUB30	CHTAER32Z	OKU0650004	NEW

HAAS
MOD: SL40

MODULO MOTORIZZATO ASSIALE MOLTIPLICATO I=1:2 DISASSATO 42mm VDI40
Axial geared-up I=1:2 driven tool re-directed by 42mm VDI40
Axial angetriebenes Werkzeug uebersetzt I=1:2 achsversetzt um 42mm VDI40



M.T. srl

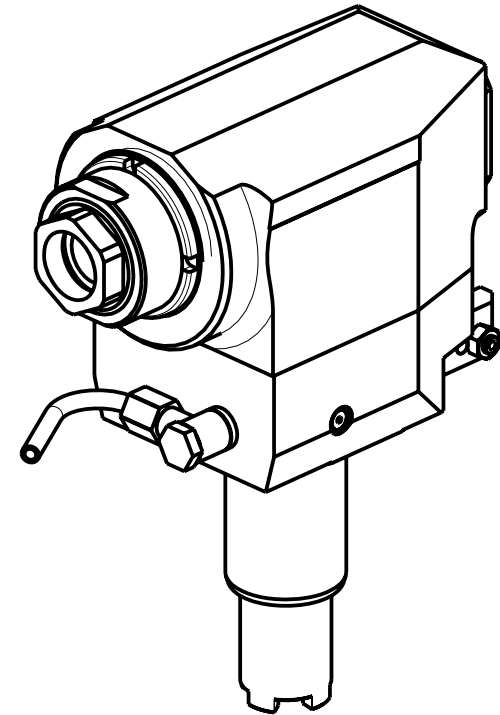
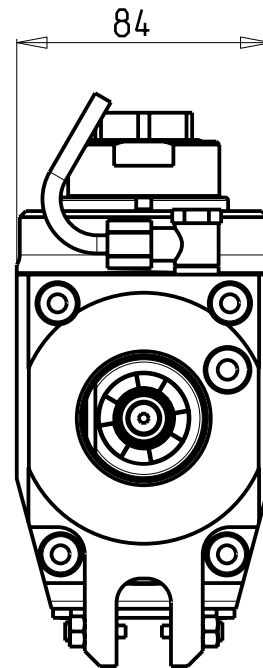
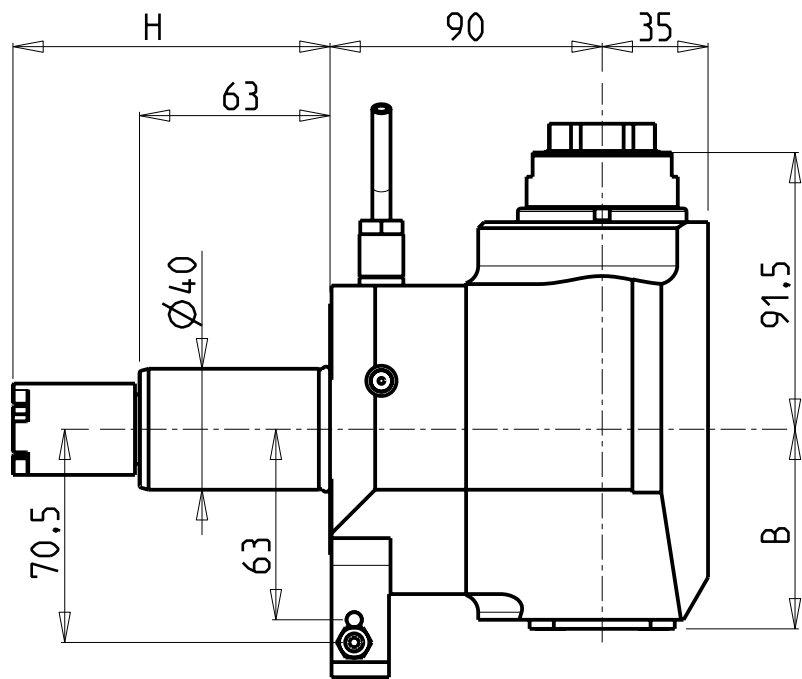
Via Casino Albini 480
Tel. 0541/956034-957884
Fax 0541/956341

47842 S. GIOVANNI IN M. (RN)
e-mail: mtma@mtmarchetti.com
http://www.mtmarchetti.com

PRODUZIONE MODULI ROTANTI



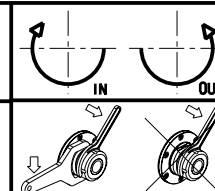
PAGINA HAS160-2-20



Cod. MT	Mandrino Spindle Spindel	I	RPM	Coppia Max Max Torque Max Drehmoment	Lubrificazione int. Coolant through Innenkühlung	Lubrificazione est. Ext. coolant Aussenkühlung	B	H	Tipo Torretta Turret type Revolver typ	CHIAVI NON INCLUSE Keys not included Schlüssel nicht einbegriffen	
										CHUB41	CHUB32
HAS0160132	ERA32	1:2	8000	30Nm		X	66	117.55	VDI STANDARD	CHUB41	CHUB32
HAS0160232	ERA32	1:2	8000	30Nm	P=70bar	X	76	117.55	VDI STANDARD	CHUB41	CHUB32
HAS0210132	ERA32	1:2	8000	30Nm		X	66	130.25	HYBRID TURRET	CHUB41	CHUB32
HAS0210232	ERA32	1:2	8000	30Nm	P=70bar	X	76	130.25	HYBRID TURRET	CHUB41	CHUB32

HAAS
MOD: SL40

MODULO MOTORIZZATO RADIALE MOLTIPLICATO I=1:2 VDI40
Radial geared-up I=1:2 driven tool VDI40
Radial angetriebenes Werkzeug uebersezt I=1:2 VDI40



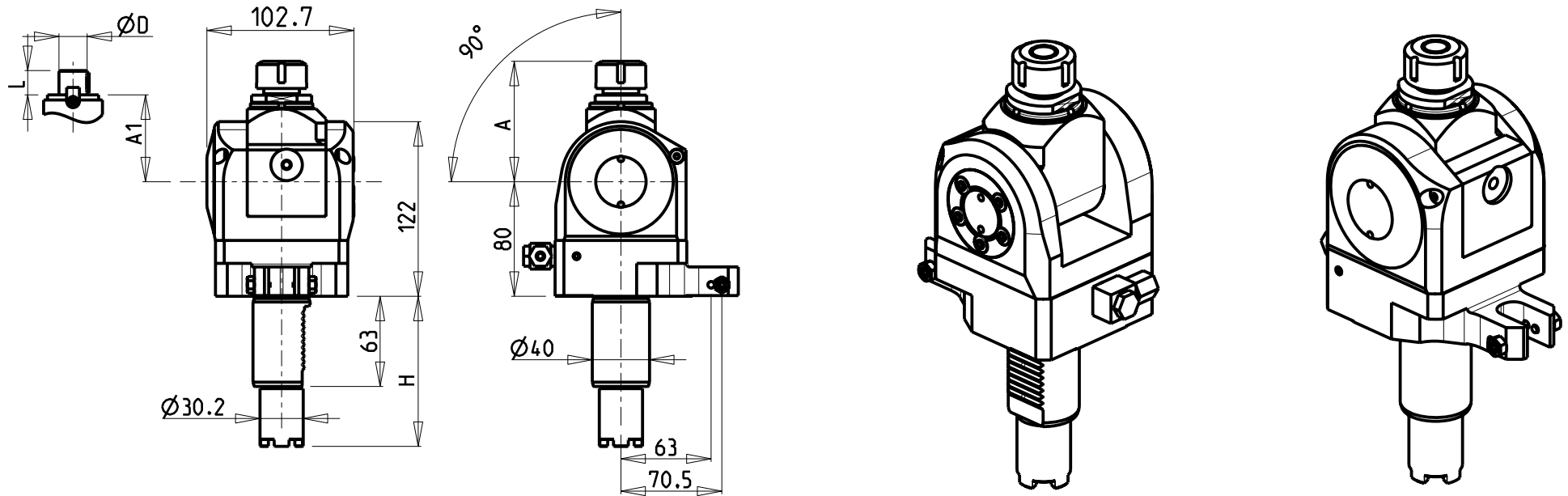
M.T. srl

Via Casino Albini 480
Tel. 0541/956034-957884
Fax 0541/956341
47842 S. GIOVANNI IN M. (RN)
e-mail: mtma@mtmarchetti.com
http://www.mtmarchetti.com

PRODUZIONE MODULI ROTANTI



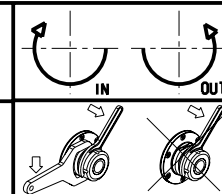
PAGINA HAS203-2-10



Cod. MT	Mandrino Spindle Spindel	I	RPM	Coppia Max Max Torque Max Drehmoment	Lubrificazione est. Ext. coolant Ausseukuehlung	A	A1	D	L	H	Tipo Torretta Turret Type Revolver Typ	CHIAVI INCLUSE Keys included Schluessel inbegriffen	
HAS0060020	ER20	1:1	4000	40Nm	X	84.16	-	-	-	117.55	VDI STANDARD	CHUB36	CHSTER20
HAS0220020	ER20	1:1	4000	40Nm	X	84.16	-	-	-	130.25	HYBRID TURRET	CHUB36	CHSTER20
HAS0060025	ER25	1:1	4000	40Nm	X	85.66	-	-	-	117.55	VDI STANDARD	CHUB36	CHSTER25
HAS0220025	ER25	1:1	4000	40Nm	X	85.66	-	-	-	130.25	HYBRID TURRET	CHUB36	CHSTER25
HAS0061617	Ø16x17	1:1	4000	40Nm	X	-	65	16	17	117.55	VDI STANDARD	CHUB36	CH_VTCROCE_M08
HAS0221617	Ø16x17	1:1	4000	40Nm	X	-	65	16	17	130.25	HYBRID TURRET	CHUB36	CH_VTCROCE_M08
HAS0062219	Ø22x19	1:1	4000	40Nm	X	-	66	22	19	117.55	VDI STANDARD	CHUB36	CH_VTCROCE_M10
HAS0222219	Ø22x19	1:1	4000	40Nm	X	-	66	22	22	130.25	HYBRID TURRET	CHUB36	CH_VTCROCE_M10
HAS0061905	Ø3/4"x3/4"	1:1	4000	40Nm	X	-	65	3/4"	3/4"	117.55	VDI STANDARD	CHUB36	CH_VTCROCE_M08
HAS0221905	Ø3/4"x3/4"	1:1	4000	40Nm	X	-	65	3/4"	3/4"	130.25	HYBRID TURRET	CHUB36	CH_VTCROCE_M08

HAAS
MOD: SL40

MODULO MOTORIZZATO ORIENTABILE 0-90° VDI40
0-90° adjustable angle driven tool VDI40
Angetriebenes Werkzeug schwenkbar 0-90° VDI40



M.T. srl

Via Casino Albini 480
Tel. 0541/956034-957884

Fax 0541/956341

47842 S. GIOVANNI IN M. (RN)
e-mail: mtma@mtmarchetti.com
http://www.mtmarchetti.com

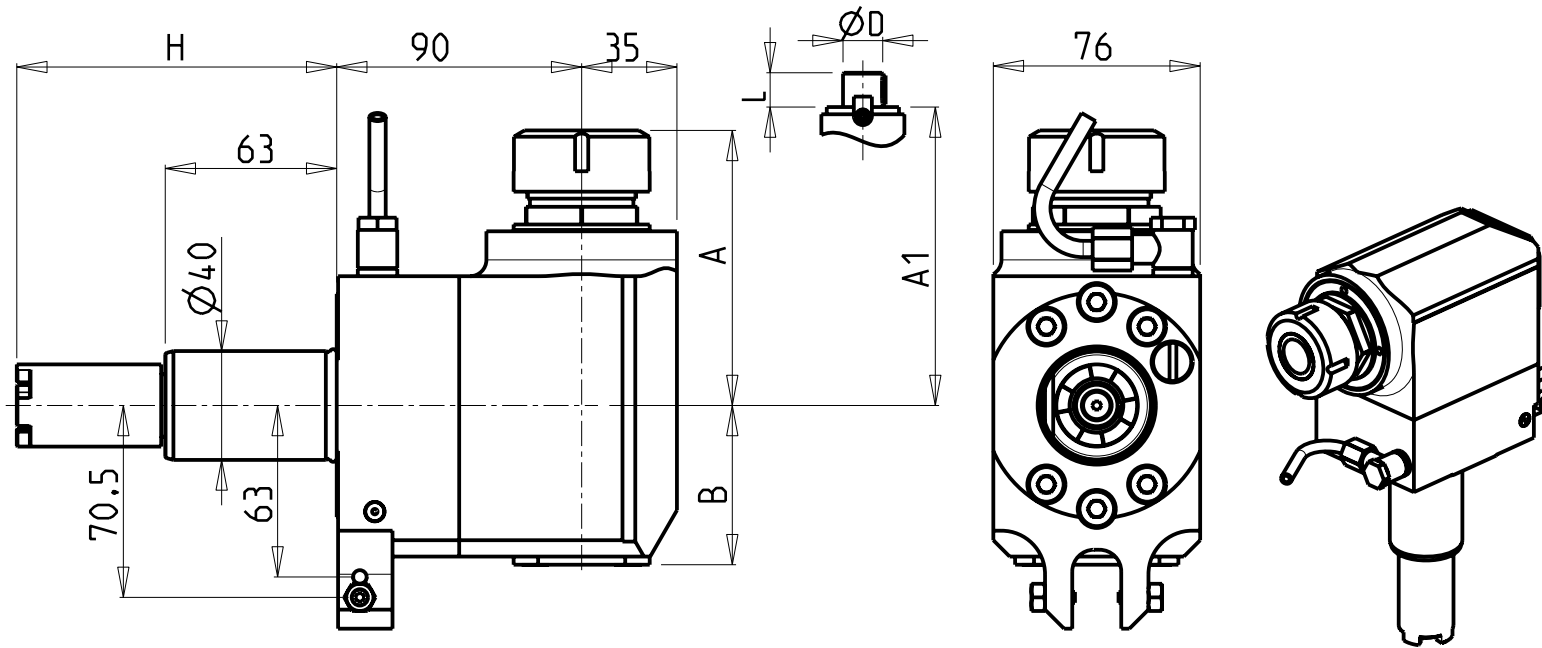
PRODUZIONE MODULI ROTANTI



PAGINA HAS330-2-00

ATTENZIONE - ATTENTION - ACHTUNG

- Per lo smontaggio degli utensili utilizzare sempre la chiave di contrasto come indicato nel manuale d'uso.
- For disassembly of the tools use always the contrast key as mentioned in the user instructions.
- Fuer das Abmontieren der Werkzeuge immer den Gegenschlüssel benutzen wie in der Bedienungsanleitung erwäehnt.

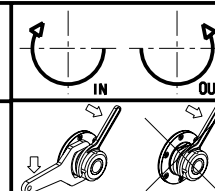


- Chiave inclusa
- Key included
- Schlüssel inbegriffen

Cod. MT	Mandrino Spindle Spindel	I	RPM	Coppia Max Max Torque Max Drehmoment	Lubrificazione int. Coolant through Innenkühlung	Lubrificazione est. Ext. coolant Ausenkühlung	A	A1	B	H	Tipo Torretta Turret type Revolver typ	CHIAVI NON INCLUSE Keys not included Schlüssel nicht einbegriffen	
HAS0140132	ER32	1:1	4000	70Nm		X	101.1	-	58.5	117.55	VDI STANDARD / HYBRID TURRET	CHUB41	CHSTER32
HAS0140232	ER32	1:1	4000	70Nm	P=70bar	X	101.1	-	82	117.55	VDI STANDARD / HYBRID TURRET	CHUB41	CHSTER32
HAS0142219	Ø22x19	1:1	4000	70Nm		X	-	78.5	58.5	117.55	VDI STANDARD / HYBRID TURRET	CHUB41	CH_VTCROCE_M10 •
HAS0142721	Ø27x21	1:1	4000	70Nm		X	-	78.5	58.5	117.55	VDI STANDARD / HYBRID TURRET	CHUB41	CH_VTCROCE_M12 •

HAAS
MOD: ST10/20/30 - DS30 - ST40 - TL15/25

MODULO MOTORIZZATO RADIALE VD140
Radial driven tool VD140
Radial angetriebenes Werkzeug VD140



M.T. srl
Via Casino Albini 480
Tel. 0541/956034-957884
Fax 0541/956341
47842 S. GIOVANNI IN M. (RN)
e-mail: mtma@mtmarchetti.com
http://www.mtmarchetti.com

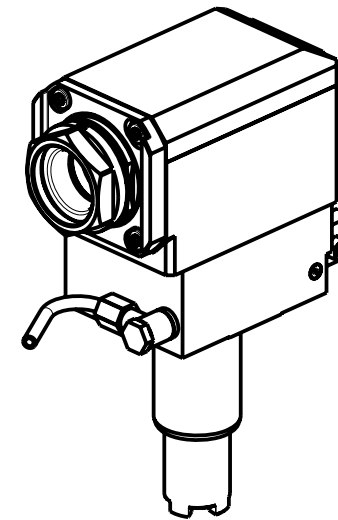
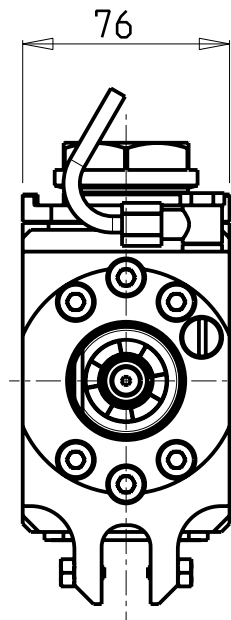
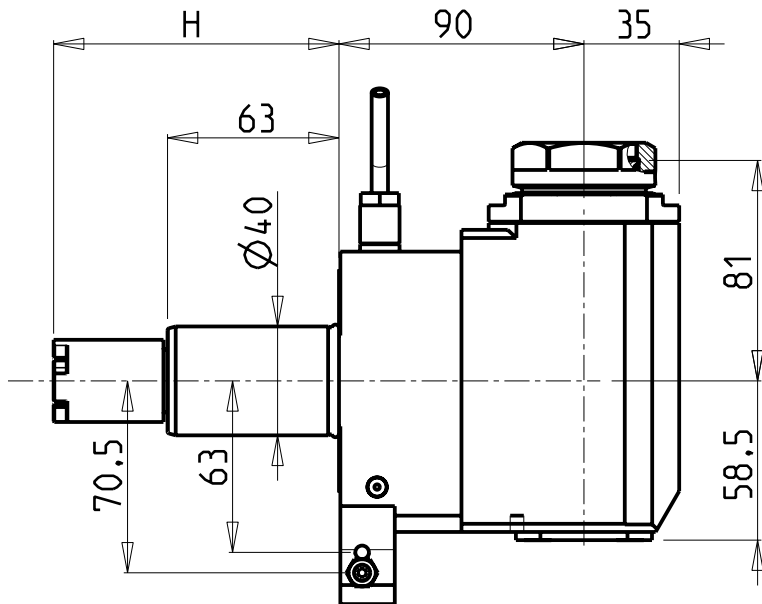
PRODUZIONE MODULI ROTANTI



PAGINA HAS013-3-20

ATTENZIONE - ATTENTION - ACHTUNG

- Per lo smontaggio degli utensili utilizzare sempre la chiave di contrasto come indicato nel manuale d'uso.
- For disassembly of the tools use always the contrast key as mentioned in the user instructions.
- Fuer das Abmontieren der Werkzeuge immer den Gegenschlüssel benutzen wie in der Bedienungsanleitung erwäehnt.



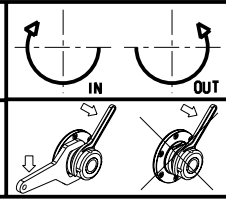
PER PORTAUTENSILI MODULARI MTSK-40 VEDI PAG. TBL300-1-40
 FOR MTSK-40 QUIK CHANGE TOOLHOLDERS CLAMPINGS SEE PAGE TBL300-1-40
 FUER MTSK-40 MODULARE WERKZEUGAUFNAHMEN SIEHE SEITE TBL300-1-40

- Chiave inclusa
- Key included
- Schluessel inbegriffen

Cod. MT	Mandrino Spindle Spindel	I	RPM	Coppia Max Max Torque Max Drehmoment	Lubrificazione est. Ext. coolant Aussenkuhlung	H	Tipo Torretta Turret type Revolver typ	CHIAVI NON INCLUSE Keys not included Schluessel nicht einbegriffen		
HAS0280140	MTSK-40	1:1	4000	70Nm	X	117.55	VDI STANDARD / HYBRID TURRET	CHUB46	OKU0650004	NEW

HAAS
 MOD: ST10/20/30 - DS30 - ST40 - TL15/25

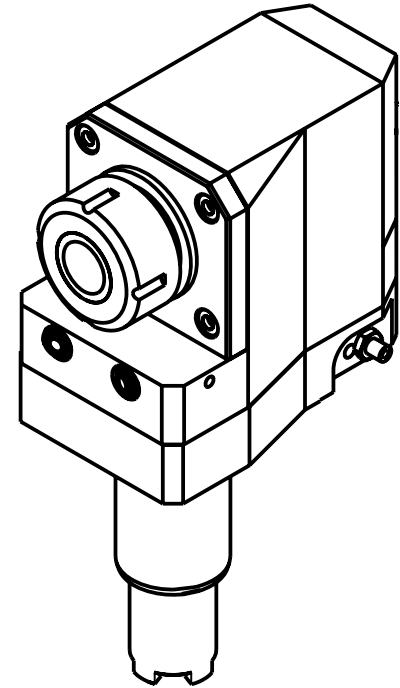
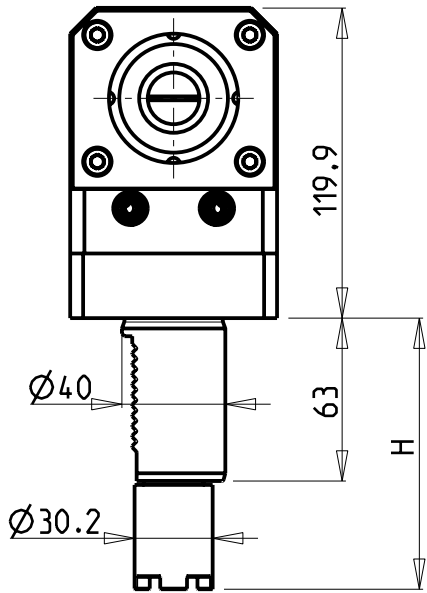
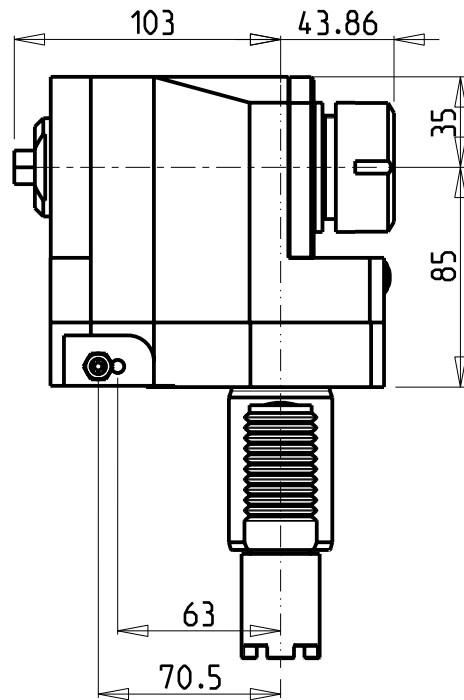
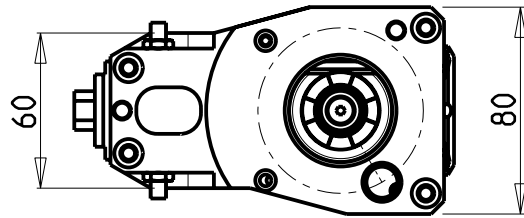
MODULO MOTORIZZATO RADIALE MTSK VDI40
 Radial MTSK driven tool VDI40
 Radial MTSK angetriebenes Werkzeug VDI40



M.T. srl
 Via Casino Albini 480
 Tel. 0541/956034-957884
 Fax 0541/956341
 47842 S. GIOVANNI IN M. (RN)
 e-mail: mtma@mtmarchetti.com
 http://www.mtmarchetti.com

PRODUZIONE MODULI ROTANTI

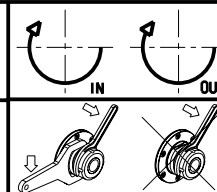
PAGINA HAS013-3-20-K



Cod. MT	Mandrino Spindle Spindel	I	RPM	Coppia Max Max Torque Max Drehmoment	Lubrificazione est. Ext. coolant Aussenkuehlung	H	Tipo Torretta Turret Type Revolver Typ	CHIAVI NON INCLUSE Keys not included Schluessel nicht einbegriffen	
HAS0040232	ER32	1:1	4000	70Nm	X	117.55	VDI STANDARD / HYBRID TURRET	CHUB13	CHSTER32

HAAS
MOD: ST10/20/30 - DS30 - ST40 - TL15/25

MODULO MOTORIZZATO RADIALE ARRETRATO VDI40
Radial rear-set driven tool VDI40
Radial angetriebenes Werkzeug zurueckversetzt VDI40

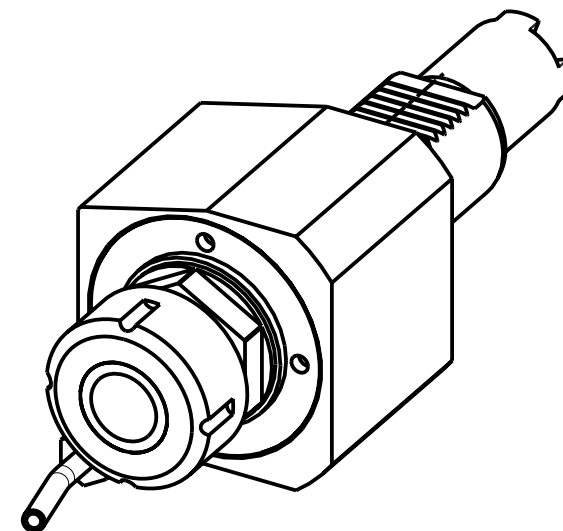
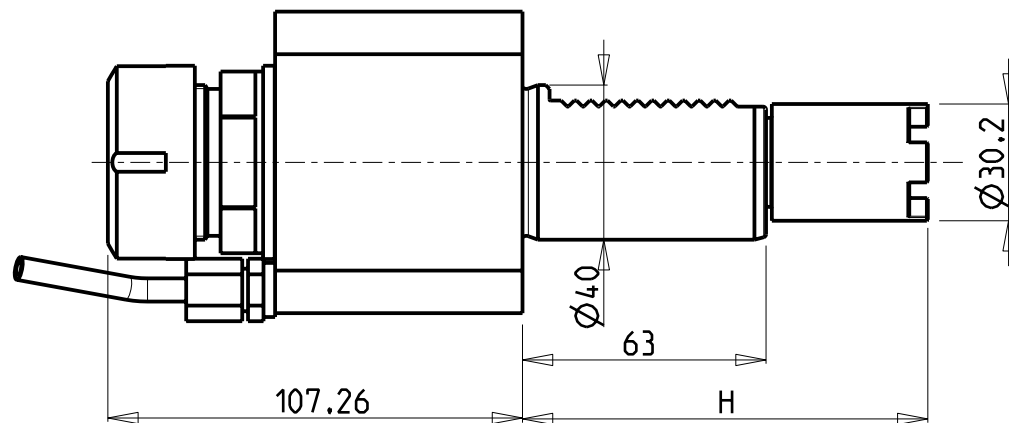
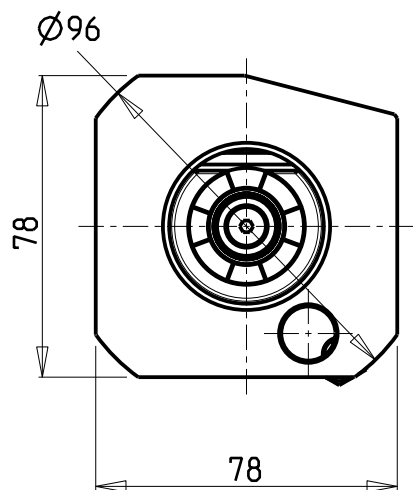


M.T. srl
Via Casino Albini 480
Tel. 0541/956034-957884
Fax 0541/956341
47842 S. GIOVANNI IN M. (RN)
e-mail: mtma@mtmarchetti.com
http://www.mtmarchetti.com

PRODUZIONE MODULI ROTANTI



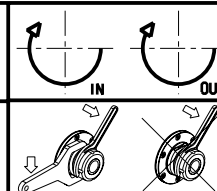
PAGINA HAS015-3-00



Cod. MT	Mandrino Spindle Spindel	I	RPM	Coppia Max Max Torque Max Drehmoment	Lubrificazione est. Ext. coolant Aussenkühlung	H	Tipo Torretta Turret Type Revolver Typ	CHIAVI NON INCLUSE Keys not included Schlüssel nicht einbegriffen	
HAS0020232	ER32	1:1	4000	70Nm	X	117.55	VDI STANDARD / HYBRID TURRET	CHUB41	CHSTER32

HAAS
MOD: ST10/20/30 - DS30 - ST40 - TL15/25

MODULO MOTORIZZATO ASSIALE VDI40
Axial driven tool VDI40
Axial angetriebenes Werkzeug VDI40

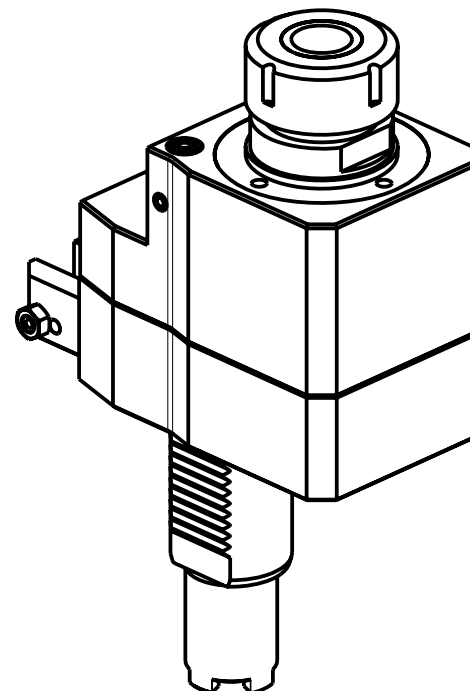
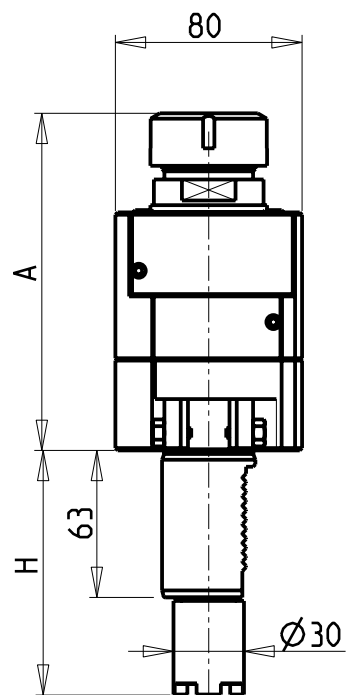
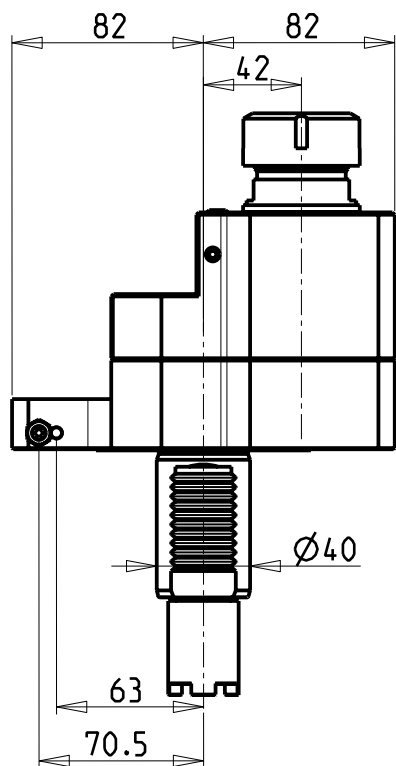


M.T. srl
Via Casino Albini 480
Tel. 0541/956034-957884
Fax 0541/956341
47842 S. GIOVANNI IN M. (RN)
e-mail: mtma@mtmarchetti.com
http://www.mtmarchetti.com

PRODUZIONE MODULI ROTANTI



PAGINA HAS150-3-10



Cod. MT	Mandrino Spindle Spindel	I	RPM	Coppia Max Max Torque Max Drehmoment	Lubrificazione int. Coolant through Innenkuhlung	Lubrificazione est. Ext. coolant Ausseinkuhlung	A	H	Tipo Torretta Turret Type Revolver Typ	CHIAVI NON INCLUSE Keys not included Schlüssel nicht einbegriffen	
HAS0080032	ER32	1:1	4000	70Nm		X	144.66	117.55	VDI STANDARD / HYBRID TURRET	CHUB41	CHSTER32
HAS0081132	ER32	1:1	4000	70Nm	P=30bar		164.96	117.55	VDI STANDARD / HYBRID TURRET	CHUB38	CHSTER32
HAS0082132	ER32	2:1	2000	100Nm		X	144.66	117.55	VDI STANDARD / HYBRID TURRET	CHUB41	CHSTER32
HAS0084232	ER32	2:1	2000	100Nm	P=30bar		164.96	117.55	VDI STANDARD / HYBRID TURRET	CHUB38	CHSTER32

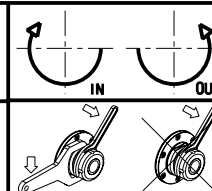
HAAS

MOD: ST10/20/30 - DS30 - ST40 - TL15/25

MODULO MOTORIZZATO ASSIALE DISASSATO 42mm VDI40

Axial driven tool re-directed by 42mm VDI40

Axial angetriebenes Werkzeug achsversetzt um 42mm VDI40



M.T. srl

Via Casino Albini 480
Tel. 0541/956034-957884

Fax 0541/956341

47842 S. GIOVANNI IN M. (RN)

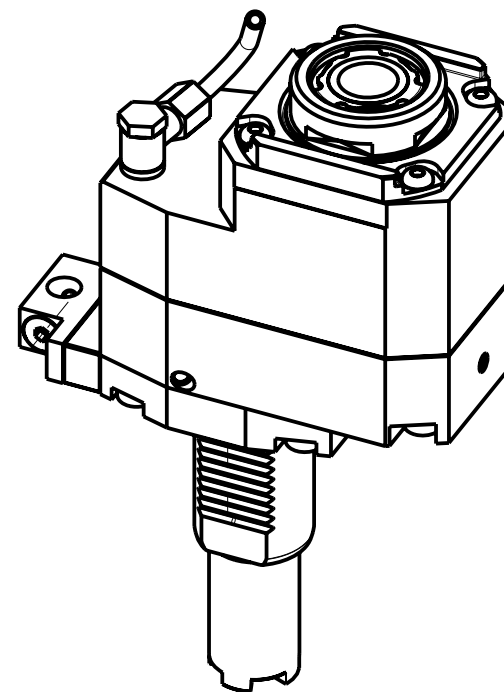
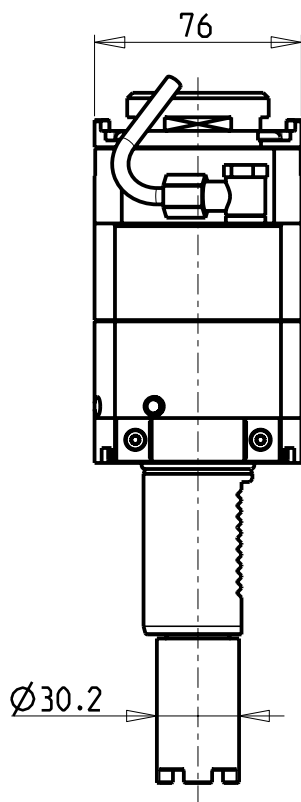
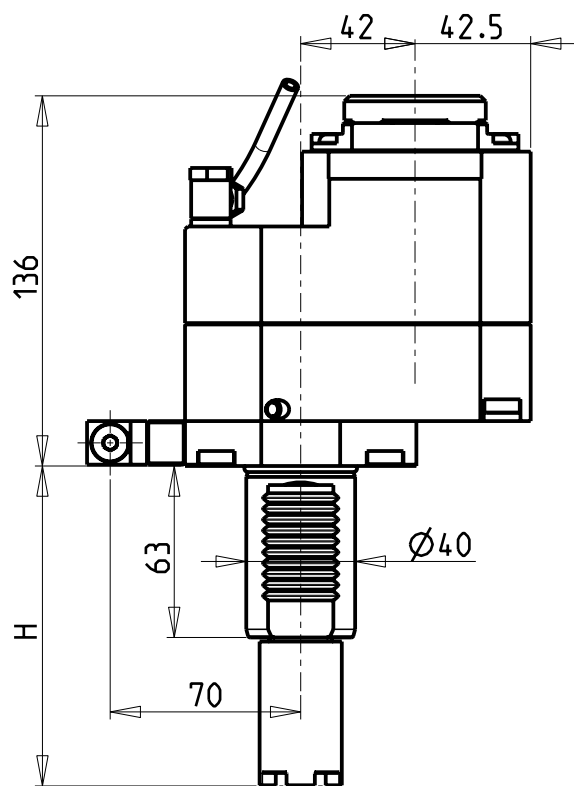
e-mail: mtma@mtmarchetti.com

http://www.mtmarchetti.com

PRODUZIONE MODULI ROTANTI



PAGINA HAS160-3-00



- Chiave inclusa
- Key included
- Schlüssel inbegriffen

Cod. MT	Mandrino Spindle Spindel	I	RPM	Coppia Max Max Torque Max Drehmoment	Lubrificazione int. Coolant through Innenkühlung	Lubrificazione est. Ext. coolant Aussenkühlung	H	Tipo Torretta Turret Type Revolver Typ	CHIAVI NON INCLUSE Keys not included Schlüssel nicht einbegriffen			
HAS0317132	ERA32	1:2	8000	45Nm	-	X	117.55	VDI STANDARD / HYBRID TURRET	CHUB30	CHTAER32Z	OKU0650004	NEW
HAS0317232	ERA32	1:2	8000	45Nm	P=30bar	X	117.55	VDI STANDARD / HYBRID TURRET	CHUB30	CHTAER32Z	OKU0650004	NEW

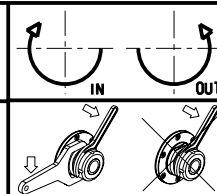
HAAS

MOD: ST10/20/30 - DS30 - ST40 - TL15/25

MODULO MOTORIZZATO ASSIALE MOLTIPLICATO I=1:2 DISASSATO 42mm VDI40

Axial geared-up I=1:2 driven tool re-directed by 42mm VDI40

Axial angetriebenes Werkzeug uebersetzt I=1:2 achsversetzt um 42mm VDI40



M.T. srl

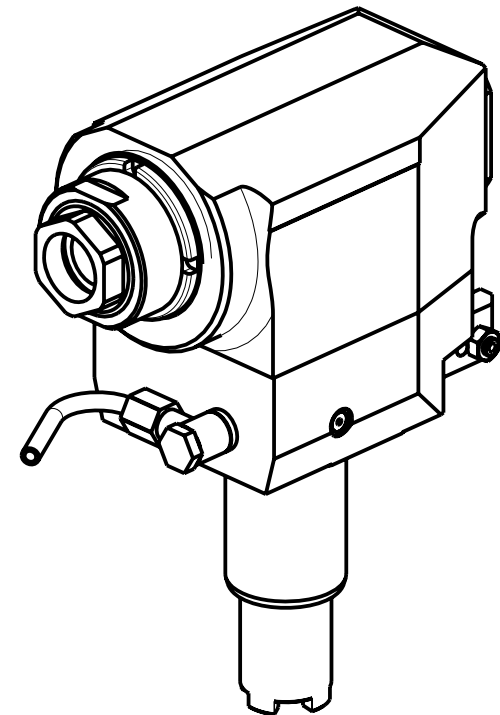
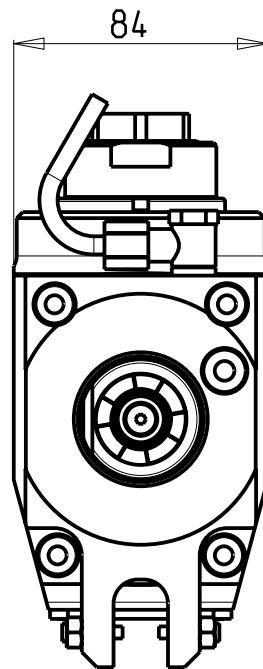
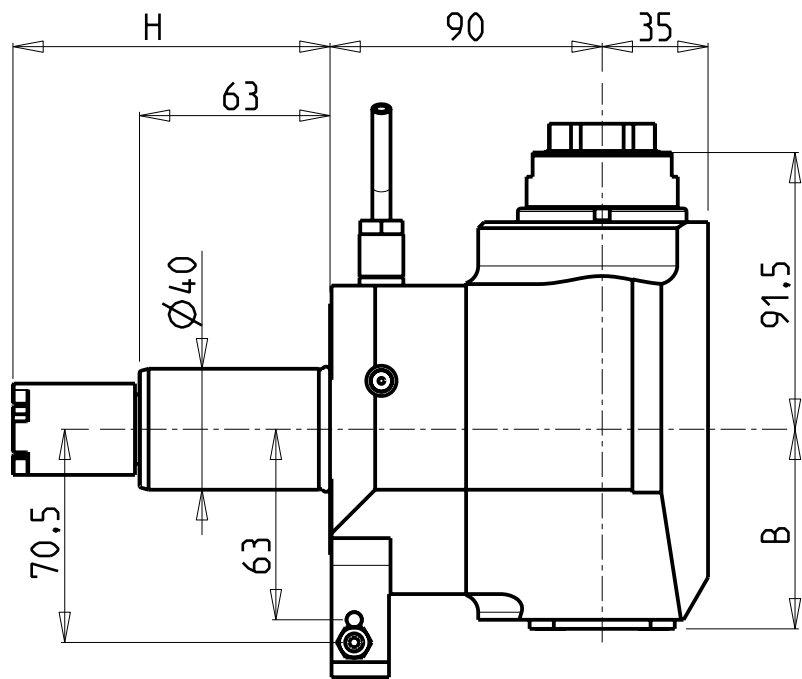
Via Casino Albini 480
Tel. 0541/956034-957884
Fax 0541/956341

47842 S. GIOVANNI IN M. (RN)
e-mail: mtma@mtmarchetti.com
http://www.mtmarchetti.com

PRODUZIONE MODULI ROTANTI

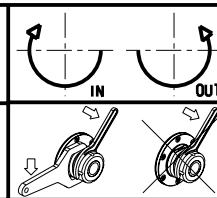


PAGINA HAS160-3-20



Cod. MT	Mandrino Spindle Spindel	I	RPM	Coppia Max Max Torque Max Drehmoment	Lubrificazione int. Coolant through Innenkühlung	Lubrificazione est. Ext. coolant Aussenkühlung	B	H	Tipo Torretta Turret type Revolver typ	CHIAVI NON INCLUSE Keys not included Schlüssel nicht einbegriffen	
HAS0160132	ERA32	1:2	8000	30Nm		X	66	117.55	VDI STANDARD / HYBRID TURRET	CHUB41	CHUB32
HAS0160232	ERA32	1:2	8000	30Nm	P=70bar	X	76	117.55	VDI STANDARD / HYBRID TURRET	CHUB41	CHUB32

HAAS
 MOD: ST10/20/30 - DS30 - ST40 - TL15/25
 MODULO MOTORIZZATO RADIALE MOLTIPLICATO I=1:2 VDI40
 Radial geared-up I=1:2 driven tool VDI40
 Radial angetriebenes Werkzeug uebersezt I=1:2 VDI40



M.T. srl
 Via Casino Albini 480
 Tel. 0541/956034-957884
 Fax 0541/956341
 47842 S. GIOVANNI IN M. (RN)
 e-mail: mtma@mtmarchetti.com
 http://www.mtmarchetti.com

PRODUZIONE MODULI ROTANTI

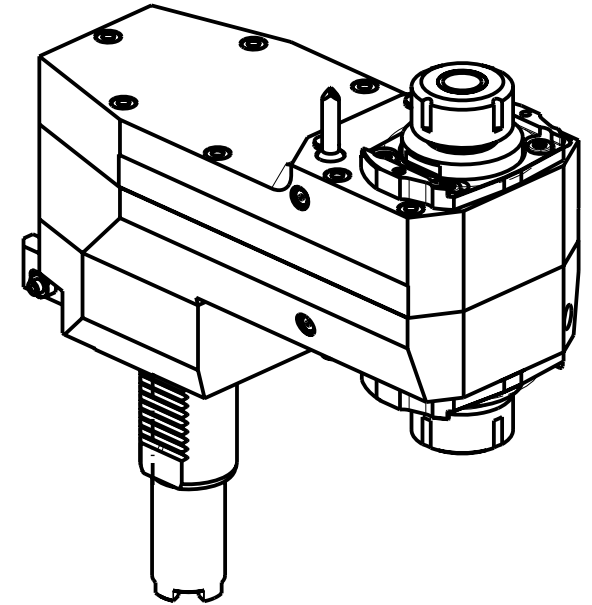
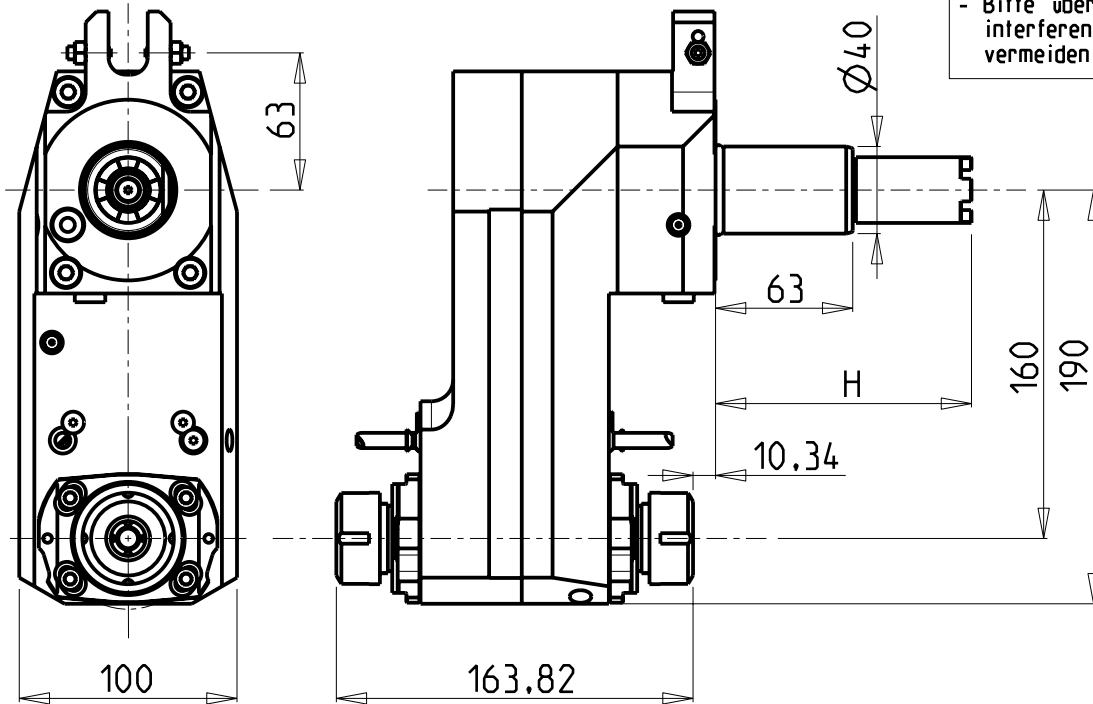
PAGINA HAS203-3-10

ATTENZIONE - ATTENTION - ACHTUNG

- VERIFICARE LE MISURE DI INGOMBRO PER POSSIBILE INTERFERENZA SU ALCUNI MODELLI DI MACCHINE
- Please check the overall sizes for possible interferences on some machine models
- Bitte überprüfen sie das ausmass um mögliche interferenzen auf einigen maschinen modellen zu vermeiden

ATTENZIONE - ATTENTION - ACHTUNG

- Per lo smontaggio degli utensili utilizzare sempre la chiave di contrasto come indicato nel manuale d'uso.
- For disassembly of the tools use always the contrast key as mentioned in the user instructions.
- Fuer das Abmontieren der Werkzeuge immer den Gegenschlüssel benutzen wie in der Bedienungsanleitung erwaeht.




Cod. MT	Mandrino Spindle Spindel	I	RPM	Coppia Max Max Torque Max Drehmoment	Lubrificazione est. Ext. coolant Aussenkuehlung	H	Tipo Torretta Turret type Revolver typ	CHIAVI NON INCLUSE Keys not included Schluessel nicht einbegriffen
HAS0230225	ER25+ER25	1:1	4000	70Nm	X	177.55	VDI STANDARD / HYBRID TURRET	OKU0650004 • CHSTER25 NEW

• Chiave inclusa
• Key included
• Schluessel inbegriffen

HAAS
 MOD: ST10/20/30 - DS30 - ST40
 MODULO MOTORIZZATO ASSIALE BISPORGENTE DISASSATO 160mm VDI40
 Axial rear-set opposite face twin driven tool re-directed by 160mm VDI40
 Axial angetriebenes Werkzeug halb vospringend achsversetzt um 160mm VDI40

M.T. srl
 Via Casino Albini 480
 Tel. 0541/956034-957884
 Fax 0541/956341
 47842 S. GIOVANNI IN M. (RN)
 e-mail: mtma@mtmarchetti.com
 http://www.mtmarchetti.com

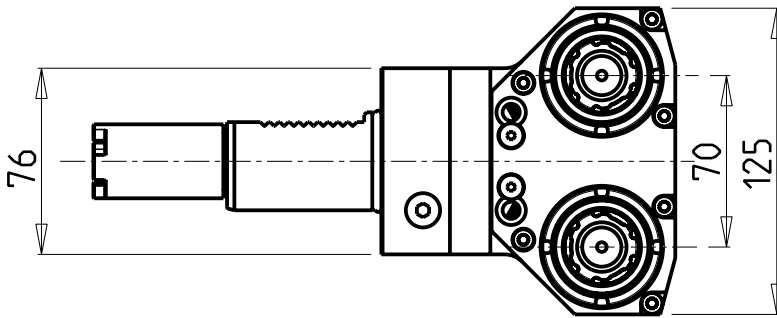
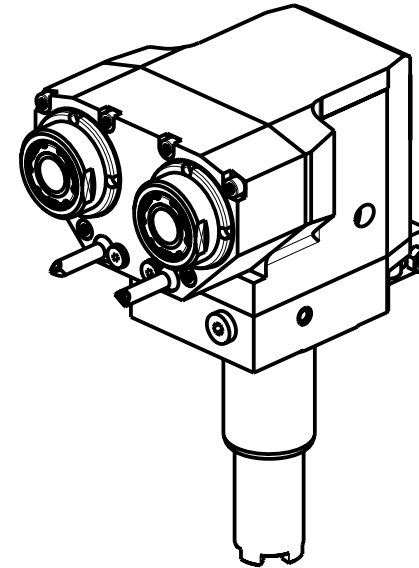
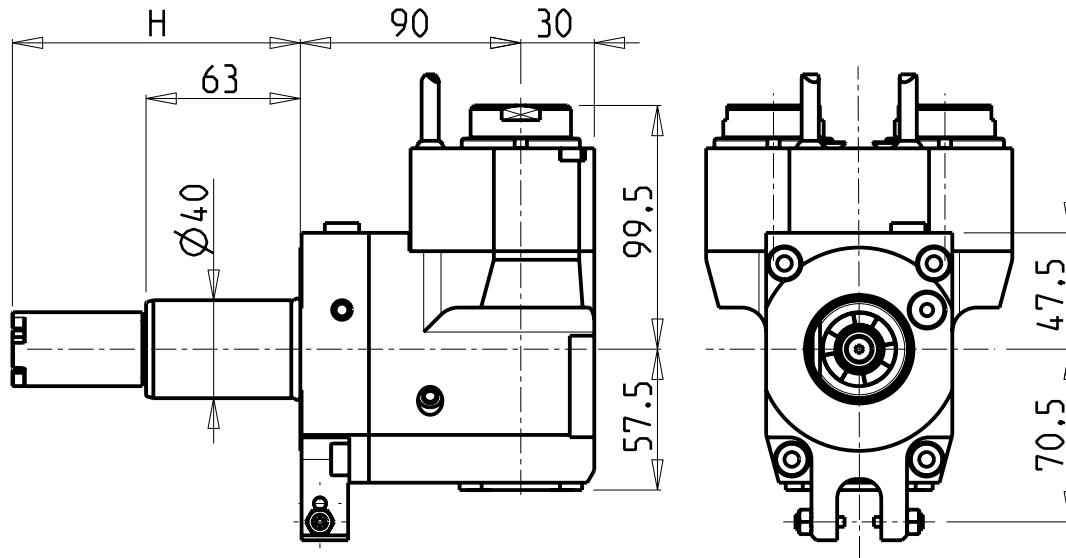
PRODUZIONE MODULI ROTANTI



PAGINA HAS243-3-10

ATTENZIONE - ATTENTION - ACHTUNG

- Per lo smontaggio degli utensili utilizzare sempre la chiave di contrasto come indicato nel manuale d'uso.
- For disassembly of the tools use always the contrast key as mentioned in the user instructions.
- Fuer das Abmontieren der Werkzeuge immer den Gegenschlüssel benutzen wie in der Bedienungsanleitung erwäehnt.



- Chiave inclusa
- Key included
- Schlüssel inbegriffen

Cod. MT	Mandrino Spindle Spindel	I	RPM	Coppia Max Max Torque Max Drehmoment	N°Utensili N° Tools N° Werkzeuge	Lubrificazione int. Coolant through Innenkuehlung	Lubr.esterna Ext. coolant Aussenkuehlung	H	Tipo Torretta Turret type Revolver typ	CHIAVI NON INCLUSE Keys not included Schluessel nicht einbegriffen			
HAS0240125	ERA25	1:1	4000	50Nm	2		X	117.55	VDI STANDARD / HYBRID TURRET	CHUB38	CHUB27	CHTAER25ZC	NEW
HAS0240225	ERA25	1:1	4000	50Nm	2	P=70bar	X	117.55	VDI STANDARD / HYBRID TURRET	CHUB38	CHUB27	CHTAER25ZC	NEW

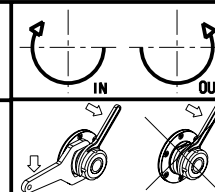
HAAS

MOD: ST10/20/30 - DS30 - ST40

MODULO MOTORIZZATO RADIALE 2 USCITE IN Y VDI40

Radial single side twin head driven tool in Y VDI40

Radial angetriebenes Werkzeug 2 Ausgaenge in Y VDI40



M.T. srl

Via Casino Albini 480
Tel. 0541/956034-957884

Fax 0541/956341

47842 S. GIOVANNI IN M. (RN)

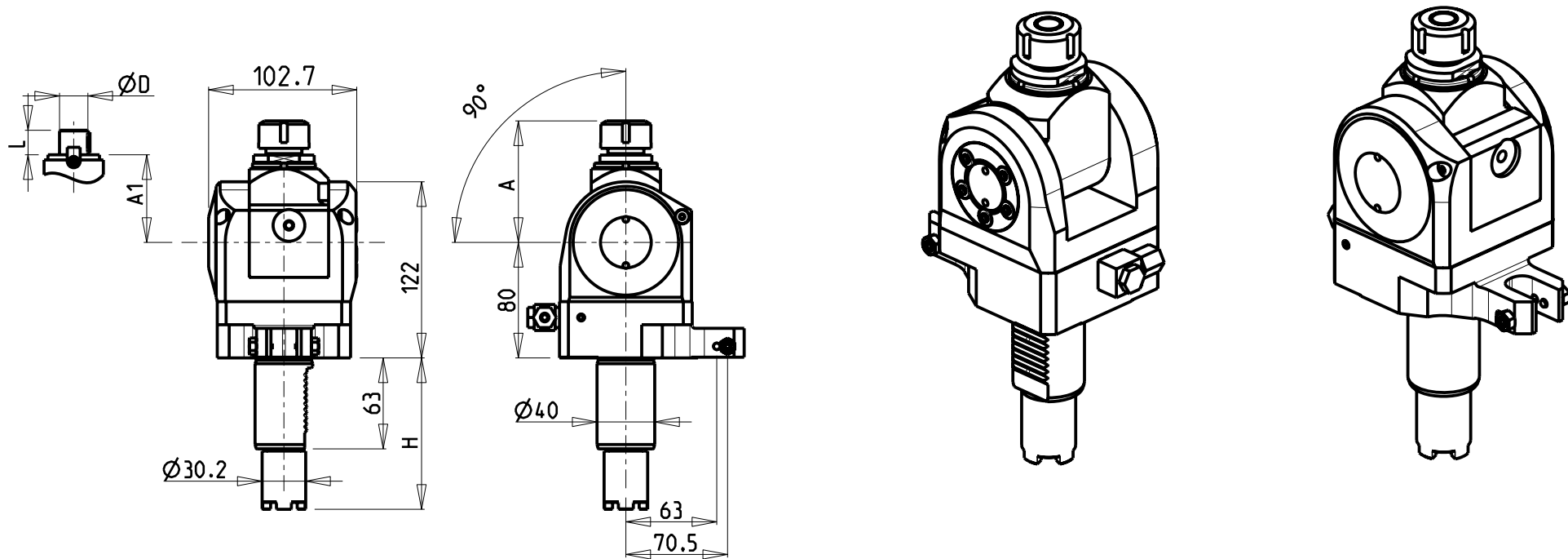
e-mail: mtma@mtmarchetti.com

http://www.mtmarchetti.com

PRODUZIONE MODULI ROTANTI



PAGINA HAS263-3-10



Cod. MT	Mandrino Spindle Spindel	I	RPM	Coppia Max Max Torque Max Drehmoment	Lubrificazione est. Ext. coolant Aussenkuehlung	A	A1	D	L	H	Tipo Torretta Turret Type Revolver Typ	CHIAVI INCLUSE Keys included Schluessel inbegriffen	
HAS0060020	ER20	1:1	4000	40Nm	X	84.16	-	-	-	117.55	VDI STANDARD / HYBRID TURRET	CHUB36	CHSTER20
HAS0060025	ER25	1:1	4000	40Nm	X	85.66	-	-	-	117.55	VDI STANDARD / HYBRID TURRET	CHUB36	CHSTER25
HAS0061617	Ø16x17	1:1	4000	40Nm	X	-	65	16	17	117.55	VDI STANDARD / HYBRID TURRET	CHUB36	CH_VTCROCE_M08
HAS0062219	Ø22x19	1:1	4000	40Nm	X	-	66	22	22	117.55	VDI STANDARD / HYBRID TURRET	CHUB36	CH_VTCROCE_M10
HAS0061905	Ø3/4"x3/4"	1:1	4000	40Nm	X	-	65	3/4"	3/4"	117.55	VDI STANDARD / HYBRID TURRET	CHUB36	CH_VTCROCE_M08

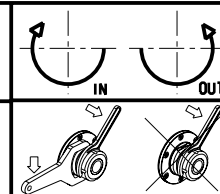
HAAS

MOD: ST10/20/30 - DS30 - ST40 - TL15/25

MODULO MOTORIZZATO ORIENTABILE 0-90° VDI40

0-90° adjustable angle driven tool VDI40

Angetriebenes Werkzeug schwenkbar 0-90° VDI40



M.T. srl

Via Casino Albini 480
Tel. 0541/956034-957884

Fax 0541/956341

47842 S. GIOVANNI IN M. (RN)

e-mail: mtma@mtmarchetti.com

http://www.mtmarchetti.com

PRODUZIONE MODULI ROTANTI



PAGINA HAS330-3-00