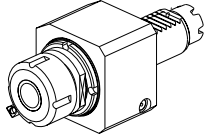
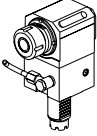
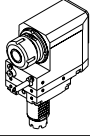
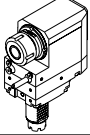
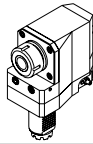
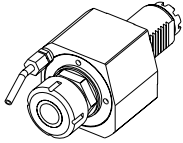
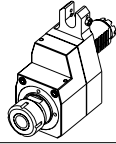
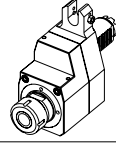


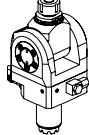
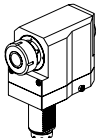
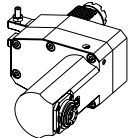
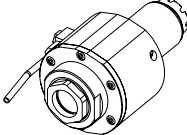
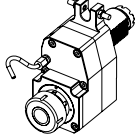
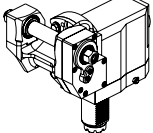
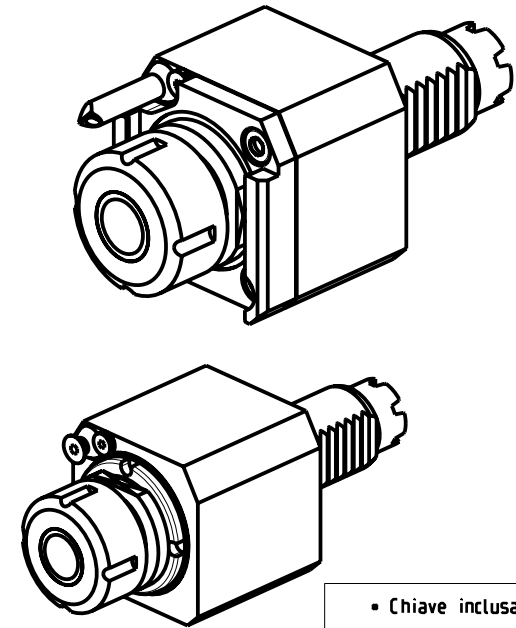
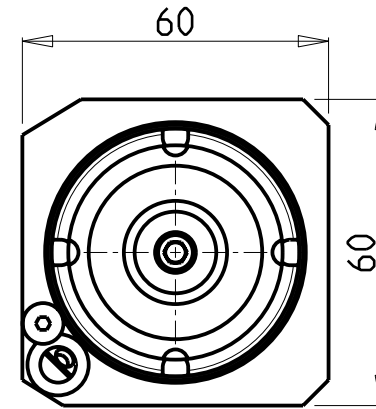
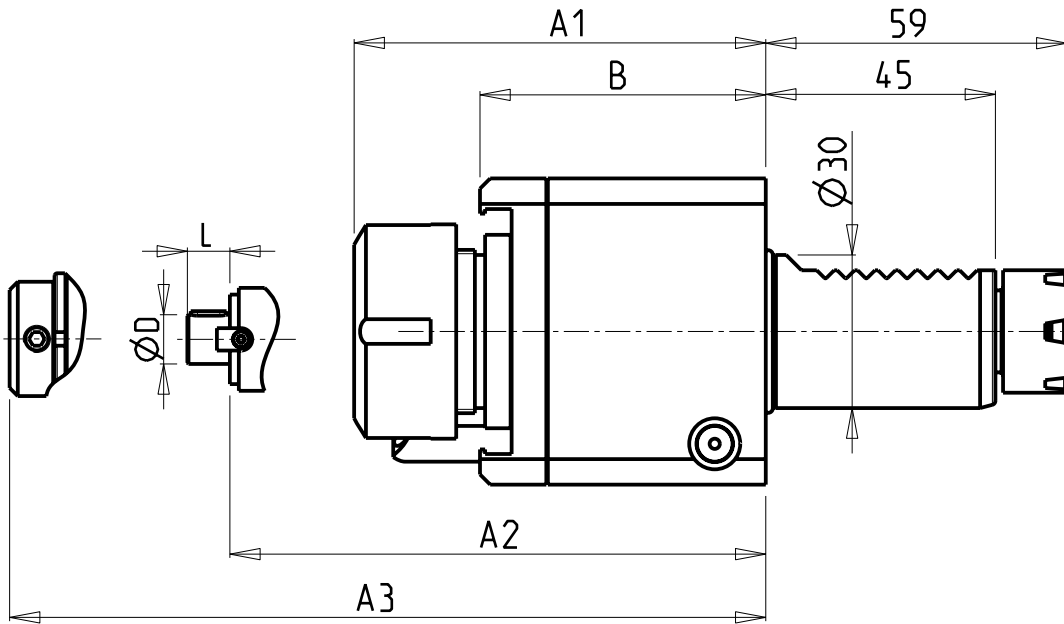


		PAGINA Page Seite
<p><b>MODULO MOTORIZZATO ASSIALE VDI30</b> Axial driven tool VDI30 Axial angetriebenes Werkzeug VDI30</p>		BAR014.1.00
<p><b>MODULO MOTORIZZATO RADIALE VDI30</b> Radial driven tool VDI30 Radial angetriebenes Werkzeug VDI30</p>		BAR015.1.00
<p><b>MODULO MOTORIZZATO RADIALE ARRETRATO VDI30 H=75mm</b> Radial rear-set driven tool VDI30 H=75mm Radial angetriebenes Werkzeug zurueckversetzt VDI30 H=75mm</p>		BAR015.1.60
<p><b>MODULO MOTORIZZATO RADIALE ARRETRATO VDI30 H=85mm</b> Radial rear-set driven tool VDI30 H=85mm Radial angetriebenes Werkzeug zurueckversetzt VDI30 H=85mm</p>		BAR015.1.70

		PAGINA Page Seite
<p><b>MODULO MOTORIZZATO RADIALE ARRETRATO VDI40</b> Radial rear-set driven tool VDI40 Radial angetriebenes Werkzeug zurueckversetzt VDI40</p>		BAR013.2.00
<p><b>MODULO MOTORIZZATO ASSIALE VDI40</b> Axial driven tool VDI40 Axial angetriebenes Werkzeug VDI40</p>		BAR150.2.10
<p><b>MODULO MOTORIZZATO ASSIALE DISASSATO 42mm VDI40</b> Axial driven tool re-directed by 42mm VDI40 Axial angetriebenes Werkzeug achsversetzt um 42mm VDI40</p>		BAR160.2.00
<p><b>MODULO MOTORIZZATO ASSIALE RIDOTTO I=2:1 DISASSATO 42mm VDI40</b> Axial geared-down I=2:1 driven tool re-directed by 42mm VDI40 Axial angetriebenes Werkzeug untersetzt I=2:1 achsversetzt um 42mm VDI40</p>		BAR160.2.10
<p><b>MODULO MOTORIZZ. ASSIALE MOLTIPLICATO I=1:2 DISASSATO 42mm VDI40</b> Axial geared-up I=1:2 driven tool re-directed by 42mm VDI40 Axial angetriebenes Werkzeug uebersetzt I=1:2 achsversetzt um 42mm VDI40</p>		BAR160.2.20 
<p><b>MODULO MOTORIZZATO ORIENTABILE 0-90° VDI40</b> 0-90° adjustable angle driven tool VDI40 Angetriebenes Werkzeug schwenkbar 0-90° VDI40</p>		BAR330.2.00

		PAGINA Page Seite
<p><b>MODULO MOTORIZZATO RADIALE VDI50</b> Radial driven tool VDI50 Radial angetriebenes Werkzeug VDI50</p>		BAR012.3.10
<p><b>MODULO MOTORIZZATO RADIALE PER LAVORAZIONI INTERNE VDI50</b> Radial driven tool for internal tooling VDI50 Radial angetriebenes Werkzeug fuer interne verarbeitungen VDI50</p>		BAR125.3.00
<p><b>MODULO MOTORIZZATO ASSIALE VDI50</b> Axial driven tool VDI50 Axial angetriebenes Werkzeug VDI50</p>		BAR150.3.10
<p><b>MODULO MOTORIZZATO ASSIALE DISASSATO 60mm VDI50</b> Axial driven tool re-directed by 60mm VDI50 Axial angetriebenes Werkzeug achsversetzt um 60mm VDI50</p>		BAR160.3.00
<p><b>MODULO MOTORIZZATO PORTACREATORE VDI50</b> Driven gear hobber VDI50 Angetriebenes Zahnradwaeltzfraes-Werkzeug VDI50</p>		BAR340.3.00

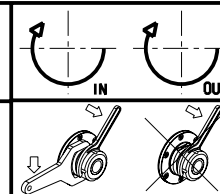




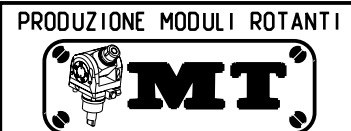
- Chiave inclusa
- Key included
- Schluessel inbegriffen

Cod. MT	Mandrino Spindle Spindel	I	RPM	Coppia Max Max Torque Max Drehmoment	Lubrificazione int. Coolant through Innenkuehlung	Lubrificazione est. Ext. coolant Aussenkuehlung	ØD	L	A1	A2	A3	B	CHIAVI NON INCLUDE Keys not included Schluessel nicht einbegriffen			
BAR0040125	ER25	1:1	6000	32Nm		X			80.66			56	-	CHSTER25	OKU0290009	•
BAR0041125	ER25	1:1	6000	32Nm	P=30bar	X			94.66			59	CHUB36	CHSTER25		-
BAR0040225	ERA25	1:1	6000	32Nm		X			61			56	CHUB27	CHTAER25ZC	•	OKU0290009
BAR0041225	ERA25	1:1	6000	32Nm	P=30bar	X			84.03			59	CHUB27	CHUB40		-
BAR0040316	WELDON16	1:1	6000	32Nm		X					66.5	56	-	-		-
BAR0041316	WELDON16	1:1	6000	32Nm	P=30bar	X					80	70	-	-		-
BAR0040416	Ø16x17	1:1	6000	32Nm		X	16	17		59.5		56	-	CH_VTCROCE_M08	•	OKU0290009
BAR0040422	Ø22x19	1:1	6000	32Nm		X	22	19		61.5		56	-	CH_VTCROCE_M10	•	OKU0290009

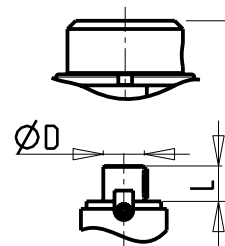
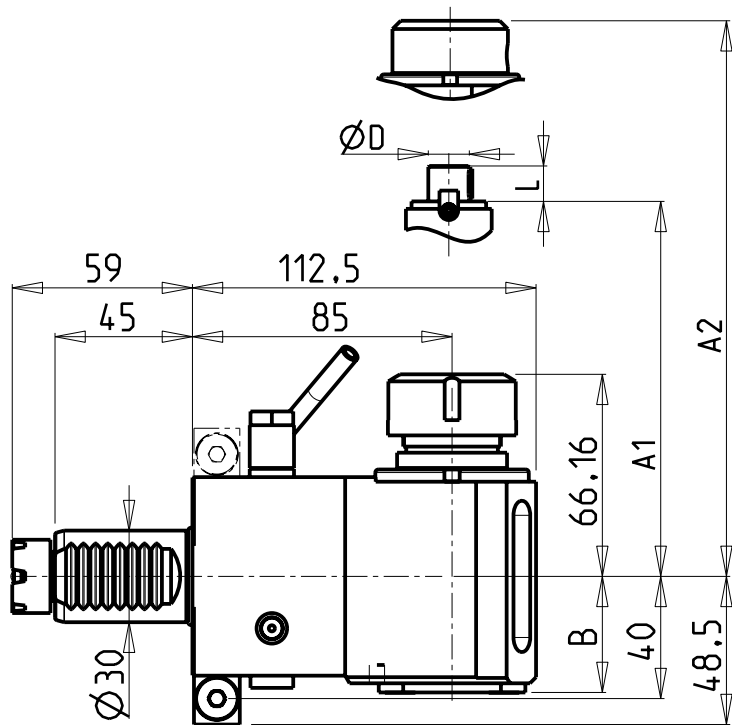
BARUFFALDI  
VDI 30  
MODULO MOTORIZZATO ASSIALE VDI30  
Axial driven tool VDI30  
Axial angetriebenes Werkzeug VDI30



**M.T. srl**  
Via Casino Albini 480  
Tel. 0541/956034-957884  
Fax 0541/956341  
47842 S. GIOVANNI IN M. (RN)  
e-mail: mtma@mtmarchetti.com  
http://www.mtmarchetti.com

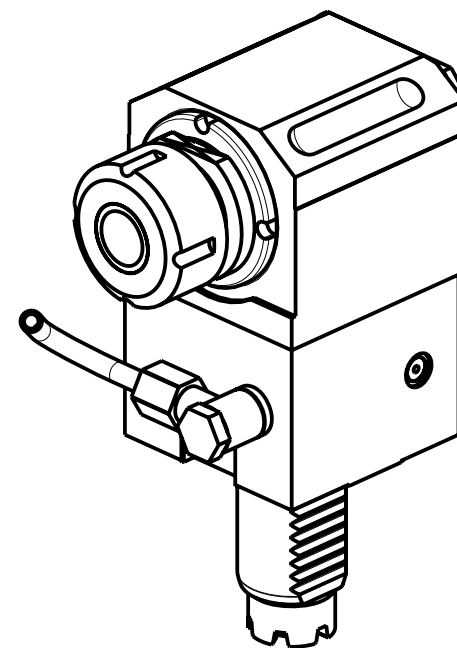
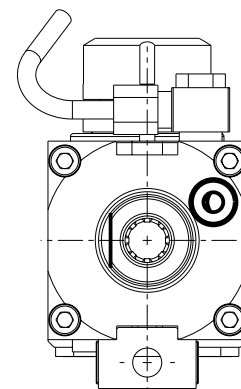
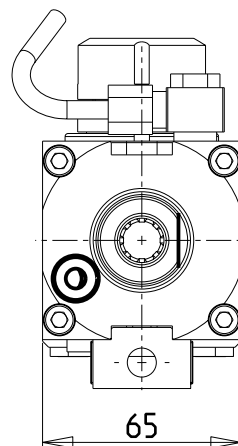


PRODUZIONE MODULI ROTANTI  
PAGINA BAR014-1-00



versione dx  
right version  
version rechts

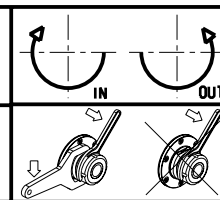
versione sx  
left version  
version links



Cod. MT		Mandrino Spindle Spindel	I	RPM	Coppia Max Max Torque Max Drehmoment	Lubrificazione int. Coolant through Innenkuehlung	Lubrificazione est. Ext. coolant Aussenkuehlung	ØD	L	A1	A2	B	CHIAVI NON INCLUDE Keys not included Schluessel nicht einbegriffen	
versione dx right version version rechts	versione sx left version version links												CHUB36	CHSTER25
BAR0060125	BAR0061125	ER25	1:1	6000	32Nm		X					38	CHUB36	CHSTER25
BAR0060225	BAR0061225	ER25	1:1	6000	32Nm	P=70bar	X					48	CHUB36	CHSTER25
BAR0060316	BAR0061316	WELDON16	1:1	6000	32Nm		X			54.5		38	-	-
BAR0060416	BAR0061416	Ø16x17	1:1	6000	32Nm		X	16	17	45		38	CHUB36	CH_VTCROCE_M08
BAR0060422	BAR0061422	Ø22x19	1:1	6000	32Nm		X	22	19	47		38	CHUB36	CH_VTCROCE_M10

- Chiave inclusa
- Key included
- Schluessel inbegriffen

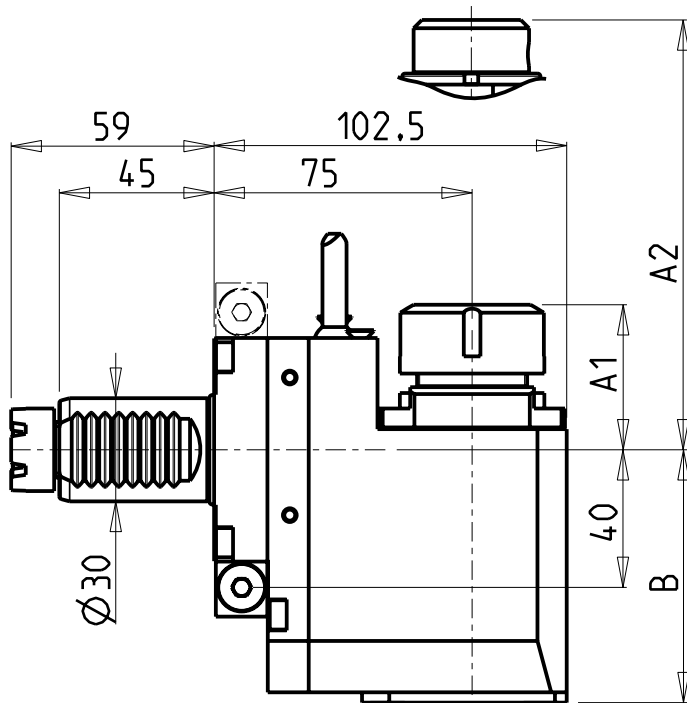
BARUFFALDI  
VDI 30  
MODULO MOTORIZZATO RADIALE VDI30  
Radial driven tool VDI30  
Radial angetriebenes Werkzeug VDI30



**M.T. srl**  
Via Casino Albini 480  
Tel. 0541/956034-957884  
Fax 0541/956341  
47842 S. GIOVANNI IN M. (RN)  
e-mail: mtma@mtmarchetti.com  
http://www.mtmarchetti.com

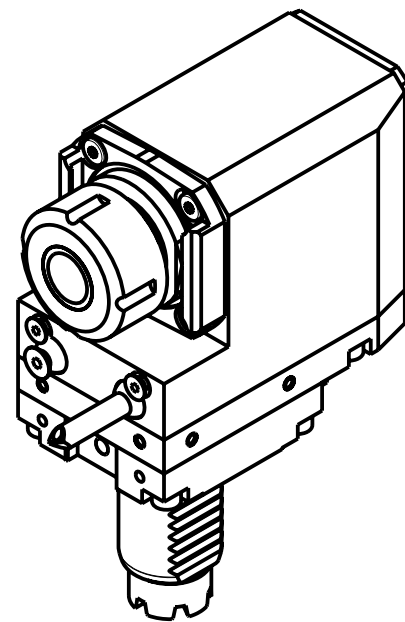
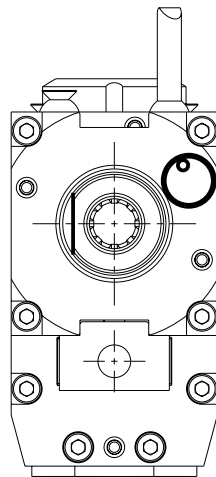
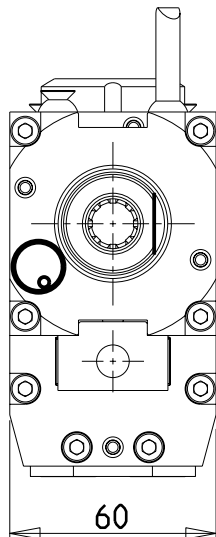
PRODUZIONE MODULI ROTANTI

PAGINA BAR015-1-00



versione dx  
right version  
version rechts

versione sx  
left version  
version links



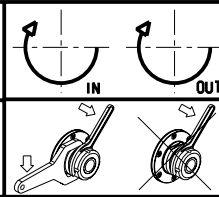
Cod. MT		Mandrino Spindle Spindel	I	RPM	Coppia Max Max Torque Max Drehmoment	Lubrificazione int. Coolant through Innenkuehlung	Lubrificazione est. Ext. coolant Aussenkuehlung	A1	A2	B	CHIAVI NON INCLUDE Keys not included Schluesssel nicht einbegriffen		
versione dx right version version rechts	versione sx left version version links												
BAR0080120	BAR0081120	ER20	1:1	6000	32Nm		X	41.16		73.5	-	CHSTER20	OKU0290009
BAR0080125	BAR0081125	ER25	1:1	6000	32Nm		X	42.16		73.5	-	CHSTER25	OKU0290009
BAR0080225	BAR0081225	ER25	1:1	6000	32Nm	P=70bar	X	42.16		83.5	-	CHSTER25	OKU0290009
BAR0080325	BAR0081325	ERA25	1:1	6000	32Nm		X	28.5		73.5	CHUB27	CHTAER25ZC	OKU0290009
BAR0080425	BAR0081425	ERA25	1:1	6000	32Nm	P=70bar	X	28.5		83.5	CHUB27	CHTAER25ZC	OKU0290009
BAR0080516	BAR0081516	WELDON16	1:1	6000	32Nm		X		27.5	73.5	-	-	-

- Chiave inclusa
- Key included
- Schluesssel inbegriffen

NEW

BARUFFALDI  
VDI 30

MODULO MOTORIZZATO RADIALE ARRETRATO VDI30 H=75mm  
Radial rear-set driven tool VDI30 H=75mm  
Radial angetriebenes Werkzeug zurueckversetzt VDI30 H=75mm



**M.T. srl**

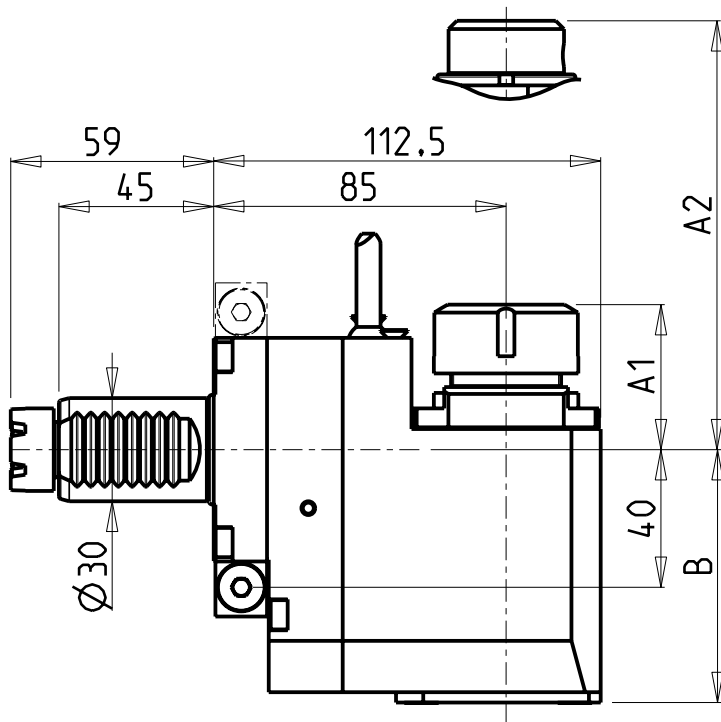
Via Casino Albini 480  
Tel. 0541/956034-957884  
Fax 0541/956341

47842 S. GIOVANNI IN M. (RN)  
e-mail: mtma@mtmarchetti.com  
http://www.mtmarchetti.com

PRODUZIONE MODULI ROTANTI

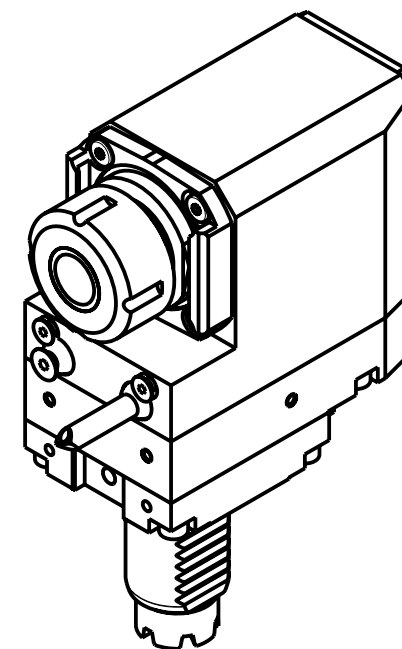
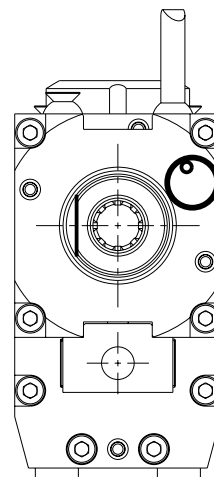
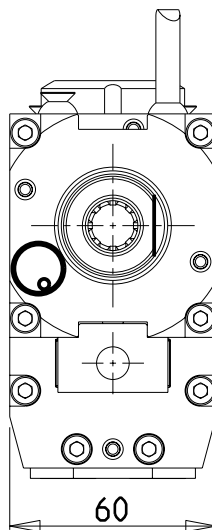


PAGINA BAR015-1-60



versione dx  
right version  
version rechts

versione sx  
left version  
version links



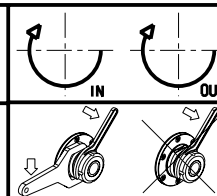
- Chiave inclusa
- Key included
- Schlüssel beigegeben

NEW

Cod. MT		Mandrino Spindle Spindel	I	RPM	Coppia Max Max Torque Max Drehmoment	Lubrificazione int. Coolant through Innenkuehlung	Lubrificazione est. Ext. coolant Aussenkuehlung	A1	A2	B	CHIAVI NON INCLUDE Keys not included Schluessel nicht beigegeben		
versione dx right version version rechts	versione sx left version version links												
BAR0070120	BAR0071120	ER20	1:1	6000	32Nm		X	41.16		73.5	-	CHSTER20	OKU0290009
BAR0070125	BAR0071125	ER25	1:1	6000	32Nm		X	42.16		73.5	-	CHSTER25	OKU0290009
BAR0070225	BAR0071225	ER25	1:1	6000	32Nm	P=70bar	X	42.16		83.5	-	CHSTER25	OKU0290009
BAR0070325	BAR0071325	ERA25	1:1	6000	32Nm		X	28.5		73.5	CHUB27	CHTAER25ZC	OKU0290009
BAR0070425	BAR0071425	ERA25	1:1	6000	32Nm	P=70bar	X	28.5		83.5	CHUB27	CHTAER25ZC	OKU0290009
BAR0070516	BAR0071516	WELDON16	1:1	6000	32Nm		X		27.5	73.5	-	-	-

BARUFFALDI  
VDI 30

MODULO MOTORIZZATO RADIALE ARRETRATO VDI30 H=85mm  
Radial rear-set driven tool VDI30 H=85mm  
Radial angetriebenes Werkzeug zurueckversetzt VDI30 H=85mm



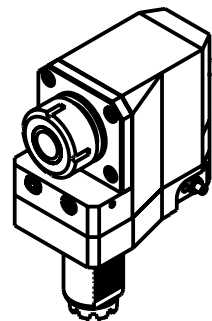
**M.T. srl**  
Via Casino Albini 480  
Tel. 0541/956034-957884  
Fax 0541/956341  
47842 S. GIOVANNI IN M. (RN)  
e-mail: mtma@mtmarchetti.com  
http://www.mtmarchetti.com

PRODUZIONE MODULI ROTANTI

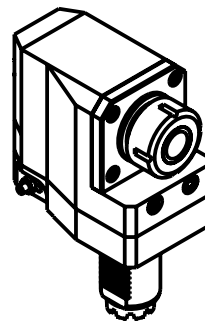
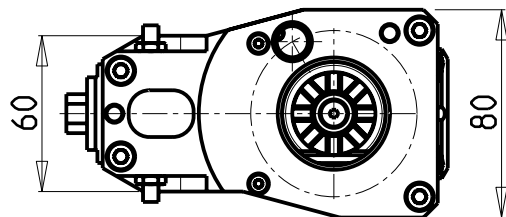


PAGINA BAR015-1-70

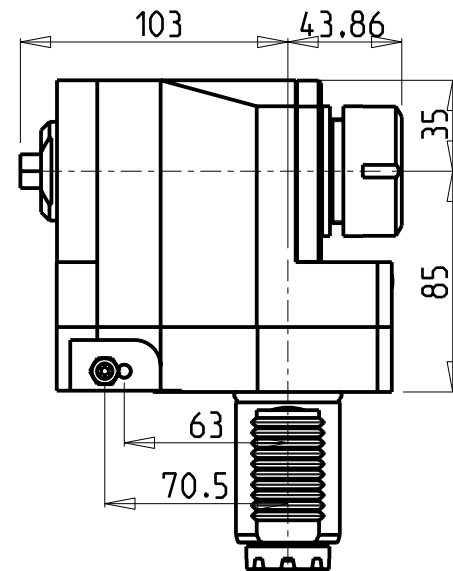
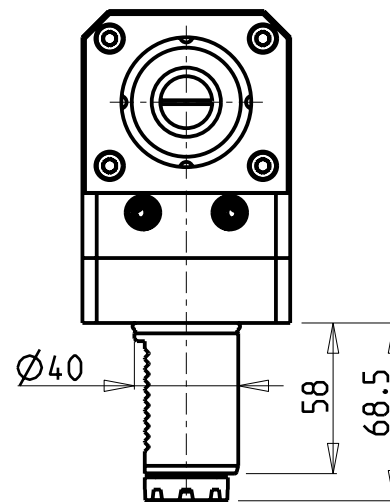
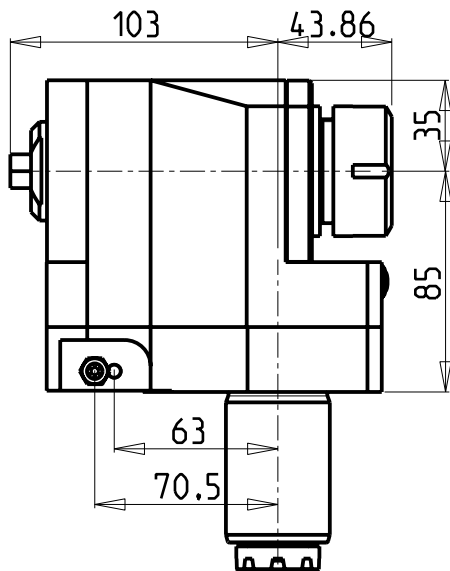
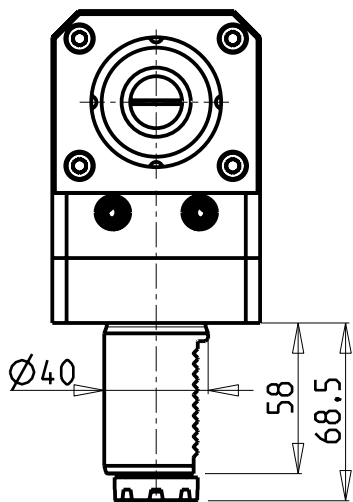
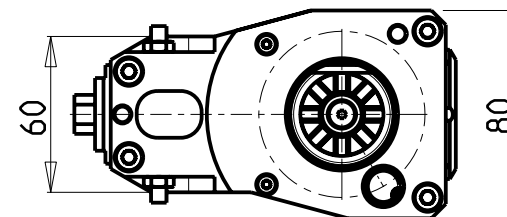




VDI DESTRO  
VDI Right hand  
VDI Recht



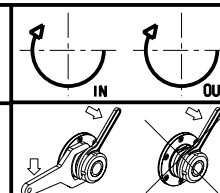
VDI SINISTRO  
VDI Left hand  
VDI Link



Cod. MT	Mandrino Spindle Spindel	I	RPM	Coppia Max Max Torque Max Drehmoment	Lubrificazione est. Ext. coolant Aussenkuehlung	CHIAVI NON INCLUSE Keys not included Schluessel nicht einbegriffen		VDI
161BAR_R32_40C00	ER32	1:1	4000	70Nm	X	CHSTER32	CHUB13	DESTRO - Right - Recht
161BAR_R32_40C20	ER32	1:1	4000	70Nm	X	CHSTER32	CHUB13	SINISTRO - Left - Link

BARUFFALDI  
VDI 40

MODULO MOTORIZZATO RADIALE ARRETRATO VDI40  
Radial rear-set driven tool VDI40  
Radial angetriebenes Werkzeug zurueckversetzt VDI40



**M.T. srl**

Via Casino Albini 480  
Tel. 0541/956034-957884

Fax 0541/956341

47842 S. GIOVANNI IN M. (RN)

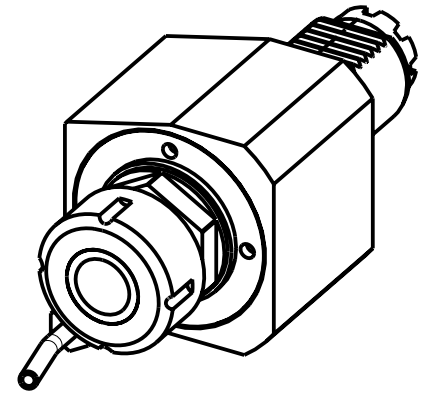
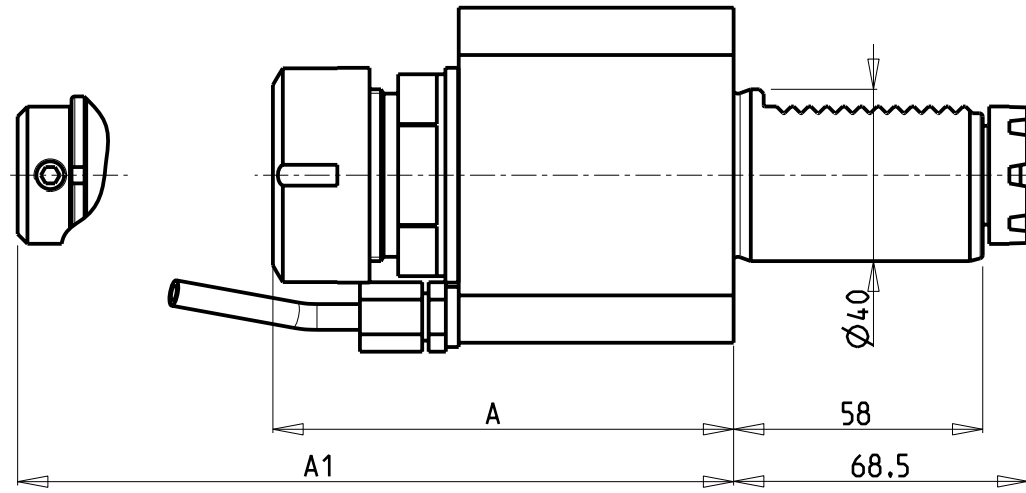
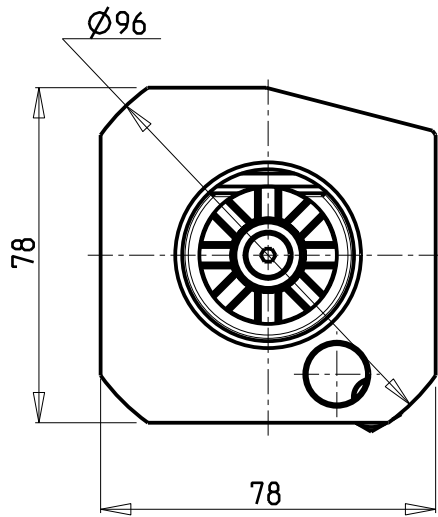
e-mail: mtma@mtmarchetti.com

http://www.mtmarchetti.com

PRODUZIONE MODULI ROTANTI



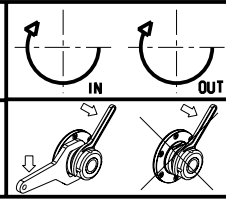
PAGINA BAR013-2-00



Cod. MT	Mandrino Spindle Spindel	I	RPM	Coppia Max Max Torque Max Drehmoment	Lubrificazione est. Ext. coolant Aussenkuehlung	A	A1	CHIAVI NON INCLUSE Keys not included Schluessel nicht einbegriffen	
162BAR_A32_40C00	ER32	1:1	4000	70Nm	X	107.26	-	CHSTER32	CHUB41
BAR0130420	WELDON 20	1:1	4000	70Nm	X	-	97.3	-	-

NEW

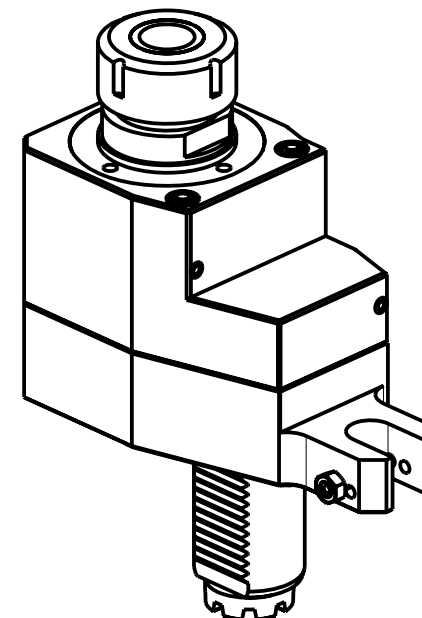
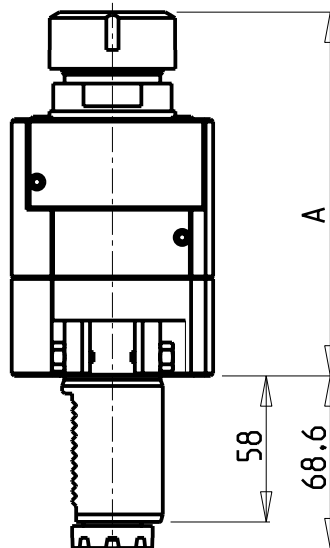
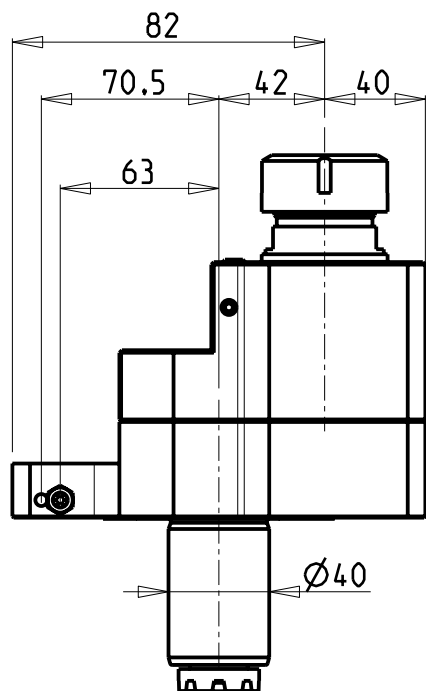
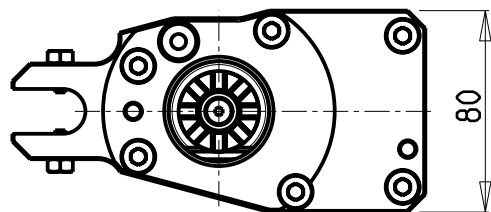
BARUFFALDI  
VDI 40  
MODULO MOTORIZZATO ASSIALE VDI40  
Axial driven tool VDI40  
Axial angetriebenes Werkzeug VDI40



**M.T. srl**  
Via Casino Albini 480  
Tel. 0541/956034-957884  
Fax 0541/956341  
47842 S. GIOVANNI IN M. (RN)  
e-mail: mtma@mtmarchetti.com  
http://www.mtmarchetti.com

PRODUZIONE MODULI ROTANTI

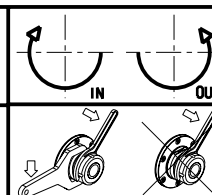
PAGINA BAR150-2-10



Cod. MT	Mandrino Spindle Spindel	i	RPM	Coppia Max Max Torque Max Drehmoment	Lubrificazione int. Coolant through Innenkuehlung	Lubrificazione est. Ext. coolant Aussenkuehlung	A	CHIAVI NON INCLUSE Keys not included Schluessel nicht einbegriffen		VDI
								CHSTER32	CHUB41	
165BAR_A32_40C00	ER32	1:1	4000	70Nm		X	144.46	CHSTER32	CHUB41	DESTRO - Right - Recht
165BAR_A32_40C10	ER32	1:1	4000	70Nm	P=30bar		164.96	CHSTER32	CHUB38	DESTRO - Right - Recht

BARUFFALDI  
VDI 40

MODULO MOTORIZZATO ASSIALE DISASSATO 42mm VDI40  
Axial driven tool re-directed by 42mm VDI40  
Axial angetriebenes Werkzeug achsversetzt um 42mm VDI40

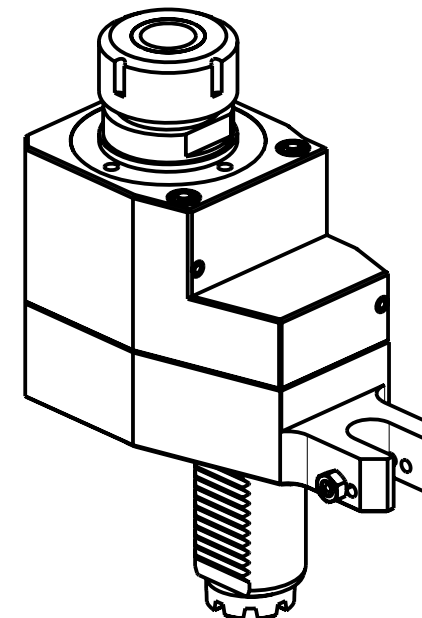
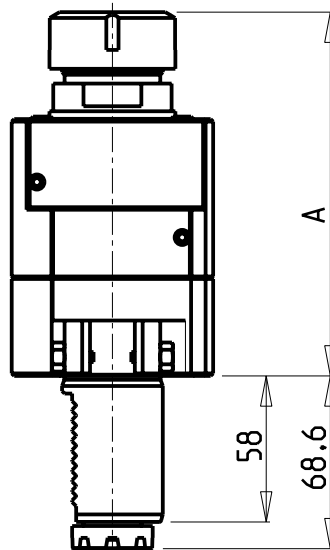
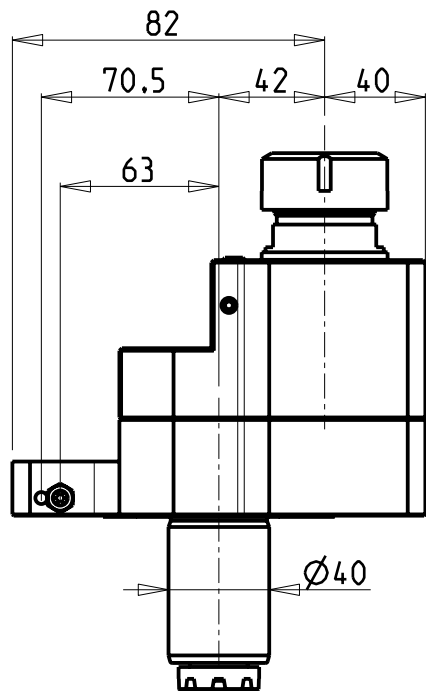
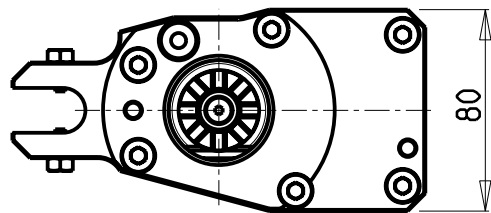


**M.T. srl**  
Via Casino Albini 480  
Tel. 0541/956034-957884  
Fax 0541/956341  
47842 S. GIOVANNI IN M. (RN)  
e-mail: mtma@mtmarchetti.com  
http://www.mtmarchetti.com

PRODUZIONE MODULI ROTANTI



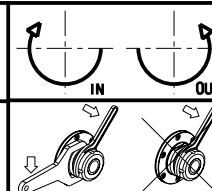
PAGINA BAR160-2-00



Cod. MT	Mandrino Spindle Spindel	i	RPM	Coppia Max Max Torque Max Drehmoment	Lubrificazione int. Coolant through Innenkuehlung	Lubrificazione est. Ext. coolant Aussenkuehlung	A	CHIAVI NON INCLUSE Keys not included Schluessel nicht einbegriffen		VDI
								CHSTER32	CHUB41	
165BAR_A32_40C 20	ER32	2:1	2000	100Nm		X	144.46	CHSTER32	CHUB41	DESTRO - Right - Recht
165BAR_A32_40C 30	ER32	2:1	2000	100Nm	P=30bar		164.96	CHSTER32	CHUB38	DESTRO - Right - Recht

BARUFFALDI  
VDI 40

MODULO MOTORIZZATO ASSIALE RIDOTTO I=2:1 DISASSATO 42mm VDI40  
Axial geared-down I=2:1 driven tool re-directed by 42mm VDI40  
Axial angetriebenes Werkzeug untersetzt I=2:1 achsversetzt um 42mm VDI40



**M.T. srl**

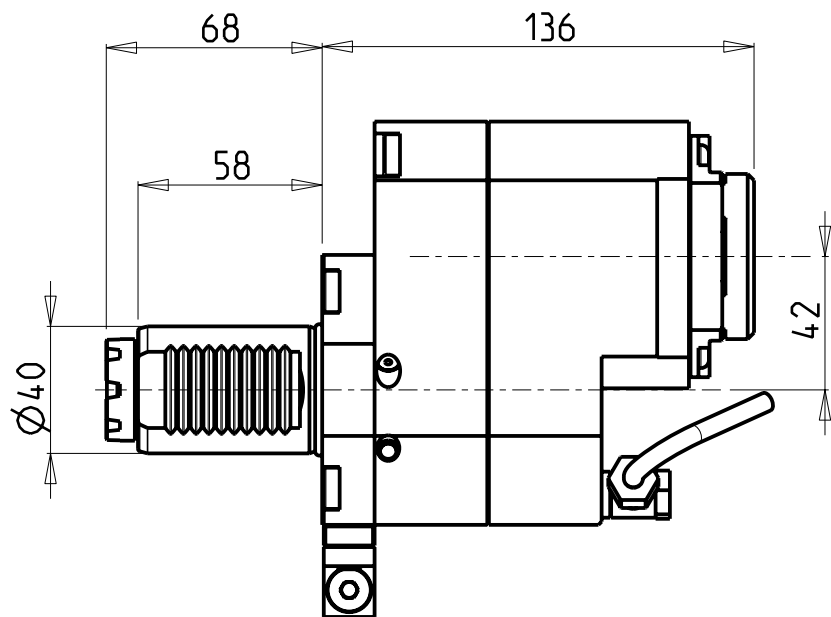
Via Casino Albini 480  
Tel. 0541/956034-957884  
Fax 0541/956341

47842 S. GIOVANNI IN M. (RN)  
e-mail: mtma@mtmarchetti.com  
http://www.mtmarchetti.com

PRODUZIONE MODULI ROTANTI

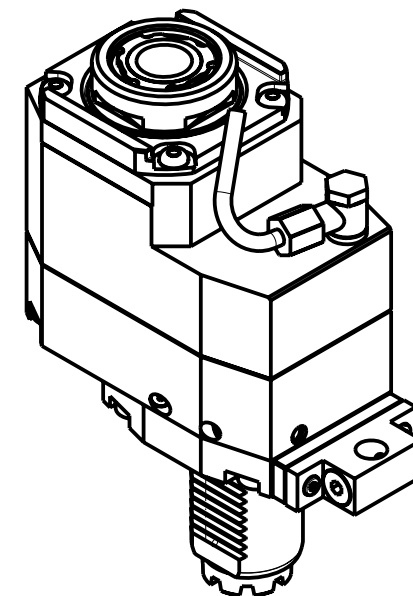
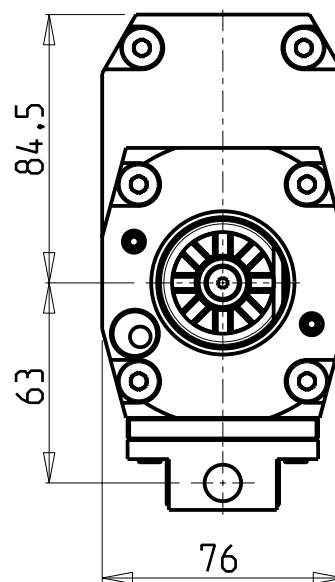


PAGINA BAR160-2-10



versione dx  
right version  
version rechts

versione sx  
left version  
version links



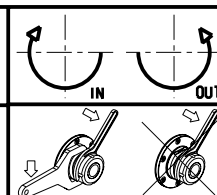
Cod. MT

versione dx right version version rechts	versione sx left version version links	Mandrino Spindle Spindel	I	RPM	Coppia Max Max Torque Max Drehmoment	Lubrificazione int. Coolant through Innenkuehlung	Lubrificazione est. Ext. coolant Aussenkuehlung	CHIAVI NON INCLUSE Keys not included Schlüssel nicht einbegriffen			
BAR0126132	BAR0127132	ERA32	1:2	8000	45Nm	-	X	CHUB30	CHTAER32ZC	OKU0650004	NEW
BAR0126232	BAR0127232	ERA32	1:2	8000	45Nm	P=30bar	X	CHUB30	CHTAER32ZC	OKU0650004	NEW

- Chiave inclusa
- Key included
- Schlüssel inbegriffen

BARUFFALDI  
VDI 40

MODULO MOTORIZZATO ASSIALE MOLTIPLICATO I=1:2 DISASSATO 42mm VDI40  
Axial geared-up I=1:2 driven tool re-directed by 42mm VDI40  
Axial angetriebenes Werkzeug uebersetzt I=1:2 achsversetzt um 42mm VDI40



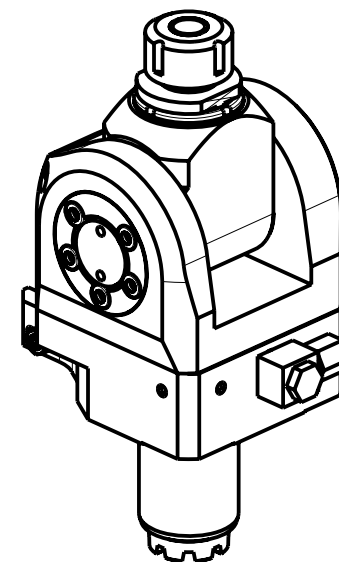
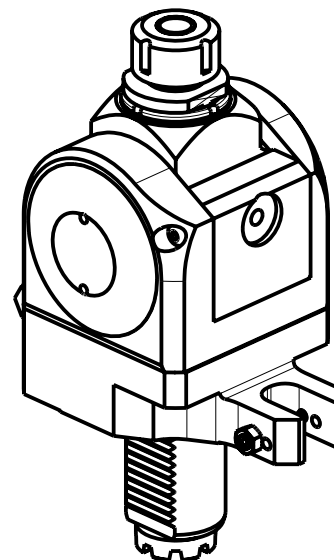
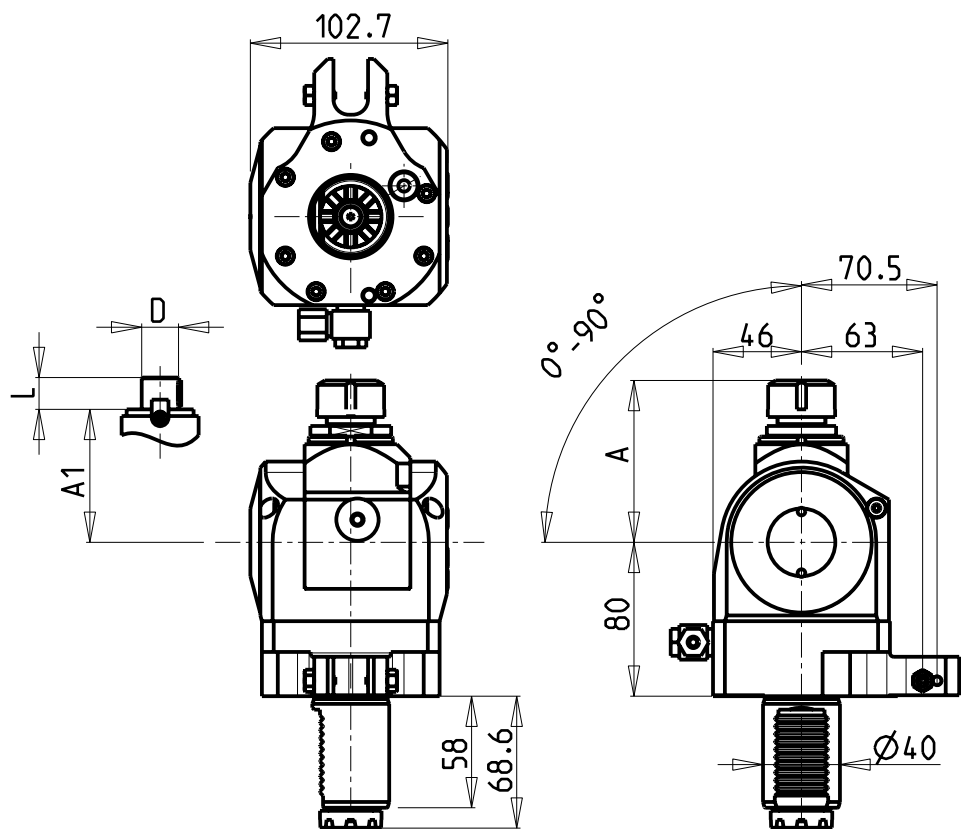
**M.T. srl**

Via Casino Albini 480  
Tel. 0541/956034-957884  
Fax 0541/956341  
47842 S. GIOVANNI IN M. (RN)  
e-mail: mtma@mtmarchetti.com  
http://www.mtmarchetti.com

PRODUZIONE MODULI ROTANTI



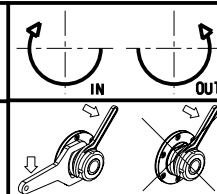
PAGINA BAR160-2-20



Cod. MT	Mandrino Spindle Spindel	I	RPM	Coppia Max Max Torque Max Drehmoment	Lubrificazione est. Ext. coolant Aussenkuehlung	A	A1	D	L	CHIAVI INCLUSE Schluessel inbegriffen Keys included	VDI
0210020_BAR	ER20	1:1	4000	40Nm	X	84.16	-	-	-	CHSTER20 CHUB36	DESTRO - Right - Recht
0210025_BAR	ER25	1:1	4000	40Nm	X	85.66	-	-	-	CHSTER25 CHUB36	DESTRO - Right - Recht
0211617_BAR	Ø16x17	1:1	4000	40Nm	X	-	65	16	17	CH_VTCROCE_M08 CHUB36	DESTRO - Right - Recht
0212219_BAR	Ø22x19	1:1	4000	40Nm	X	-	66	22	19	CH_VTCROCE_M10 CHUB36	DESTRO - Right - Recht
0211905_BAR	Ø3/4"x3/4"	1:1	4000	40Nm	X	-	65	3/4"	3/4"	CH_VTCROCE_M12 CHUB36	DESTRO - Right - Recht

BARUFFALDI  
VDI 40

MODULO MOTORIZZATO ORIENTABILE 0-90° VDI40  
0-90° adjustable angle driven tool VDI40  
Angetriebenes Werkzeug schwenkbar 0-90° VDI40



**M.T. srl**

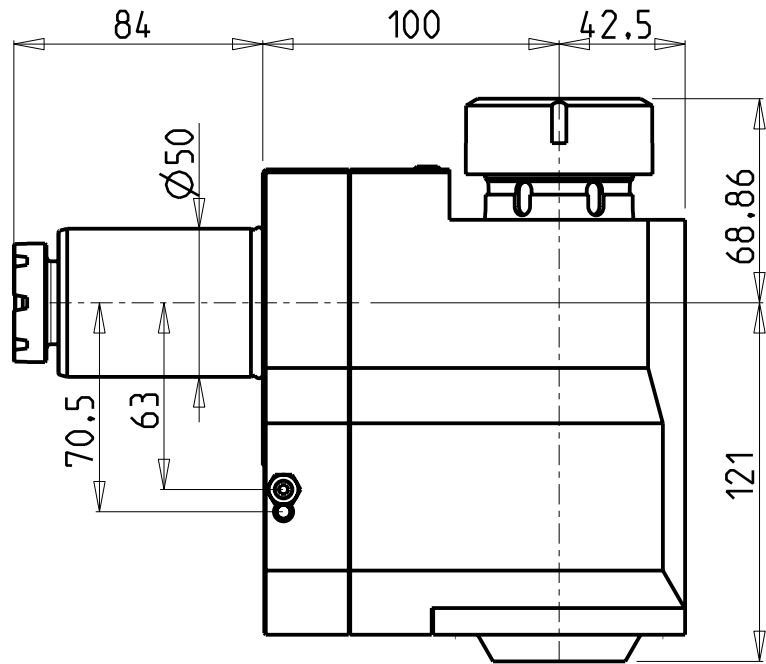
Via Casino Albini 480  
Tel. 0541/956034-957884  
Fax 0541/956341

47842 S. GIOVANNI IN M. (RN)  
e-mail: mtma@mtmarchetti.com  
http://www.mtmarchetti.com

PRODUZIONE MODULI ROTANTI

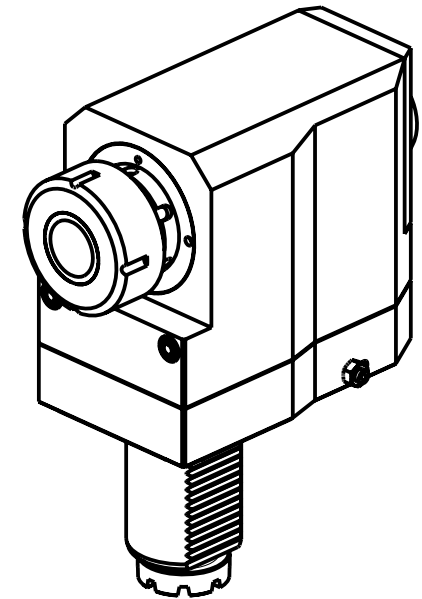
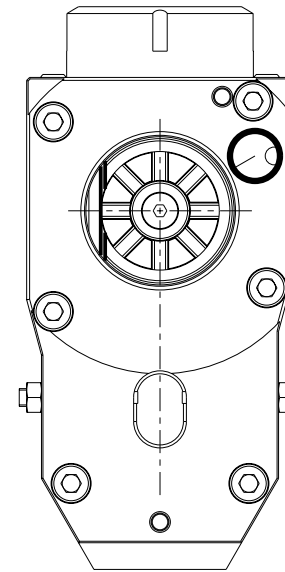
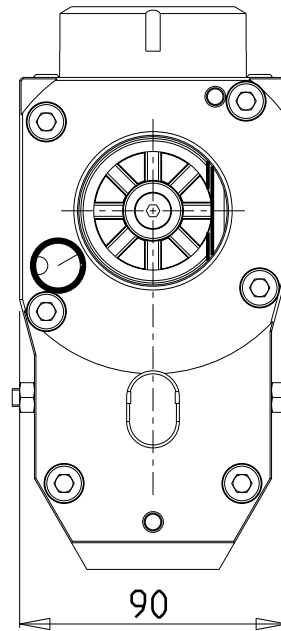


PAGINA BAR330-2-00



versione dx  
right version  
version rechts

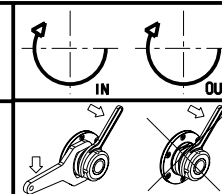
versione sx  
left version  
version links



Cod. MT	Mandrino Spindle Spindel	I	RPM	Coppia Max Max Torque Max Drehmoment	Lubrificazione est. Ext. coolant Aussenkuehlung	CHIAVI NON INCLUSE Keys not included Schluessel nicht einbegriffen		VDI
181BAR_R40_50C00	ER40	1:1	4000	100Nm	X	CHSTER40	CHSE5255	DESTRO - Right - Recht
181BAR_R40_50C20	ER40	1:1	4000	100Nm	X	CHSTER40	CHSE5255	SINISTRO - Left - Links

BARUFFALDI  
VDI 50

MODULO MOTORIZZATO RADIALE VDI50  
Radial driven tool VDI50  
Radial angetriebenes Werkzeug VDI50



**M.T. srl**

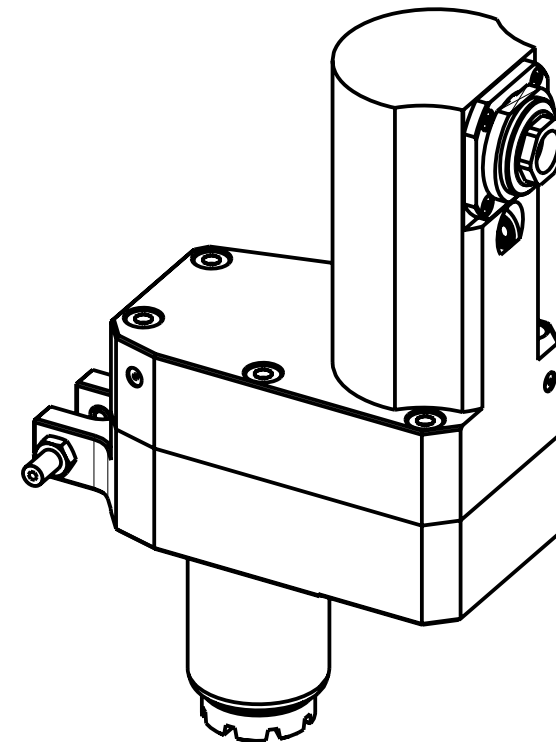
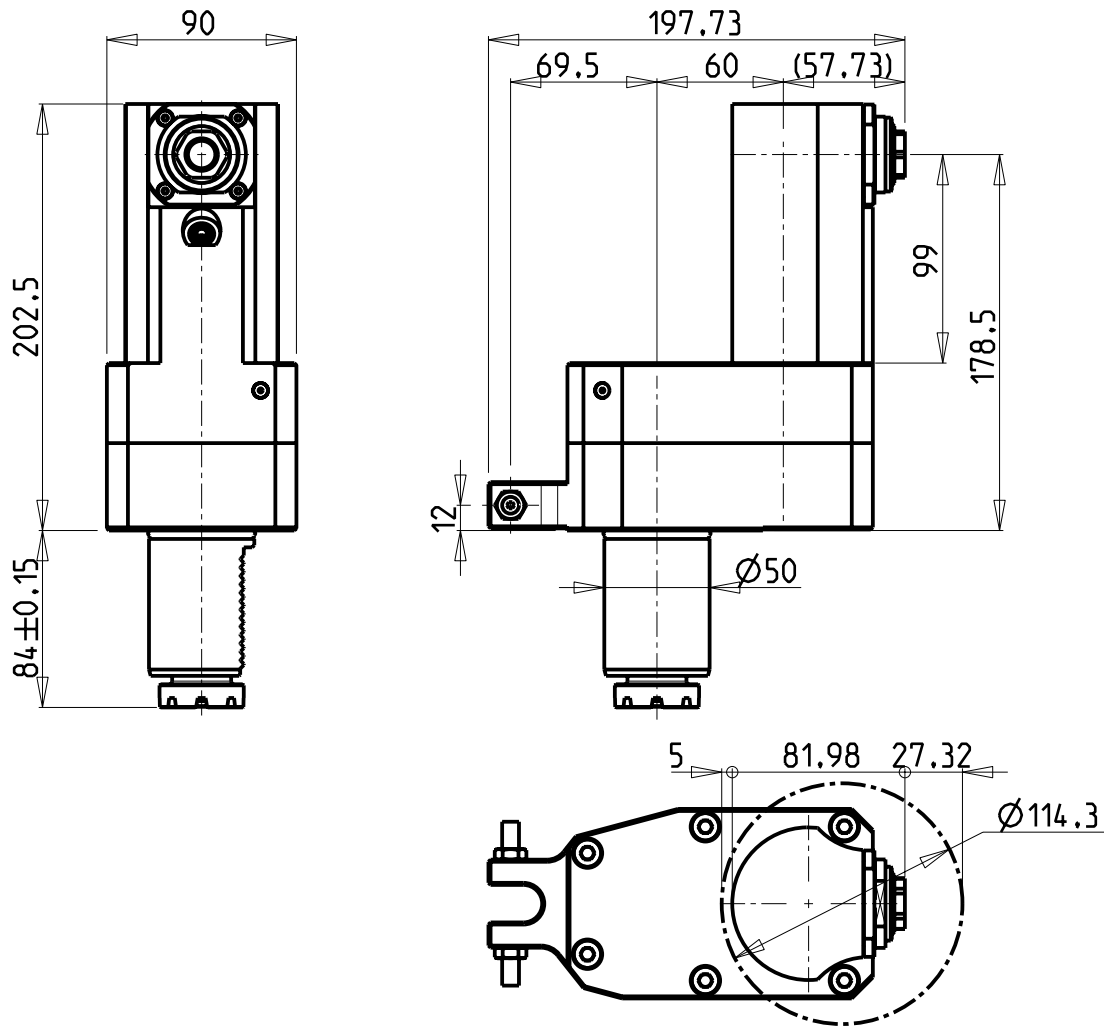
Via Casino Albini 480  
Tel. 0541/956034-957884  
Fax 0541/956341

47842 S. GIOVANNI IN M. (RN)  
e-mail: mtma@mtmarchetti.com  
http://www.mtmarchetti.com

PRODUZIONE MODULI ROTANTI



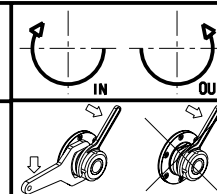
PAGINA BAR012-3-10



Cod. MT	Mandrino Spindle Spindel	I	RPM MAX	Coppia Max Max Torque Max Drehmoment	Lubrificazione est. Ext. coolant Aussenkuehlung	CHIAVI INCLUSE Keys included Schlüssel inbegriffen		VDI
BAR0010120	ER A 20	1:1	4000	25Nm	X	CHUB22	CHUB36	DESTRO - Right - Recht

BARUFFALDI  
VDI 50

MODULO MOTORIZZATO RADIALE PER LAVORAZIONI INTERNE VDI50  
Radial driven tool for internal tooling VDI50  
Radial angetriebenes Werkzeug fuer interne verarbeitungen VDI50



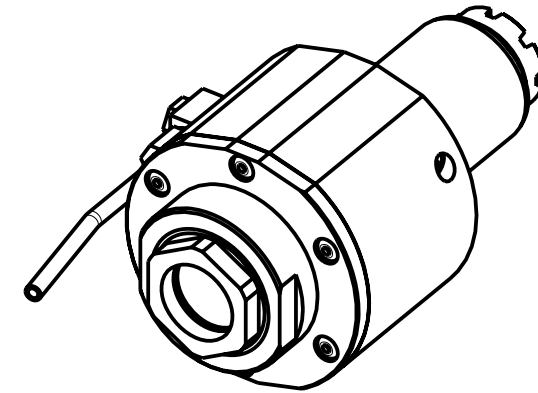
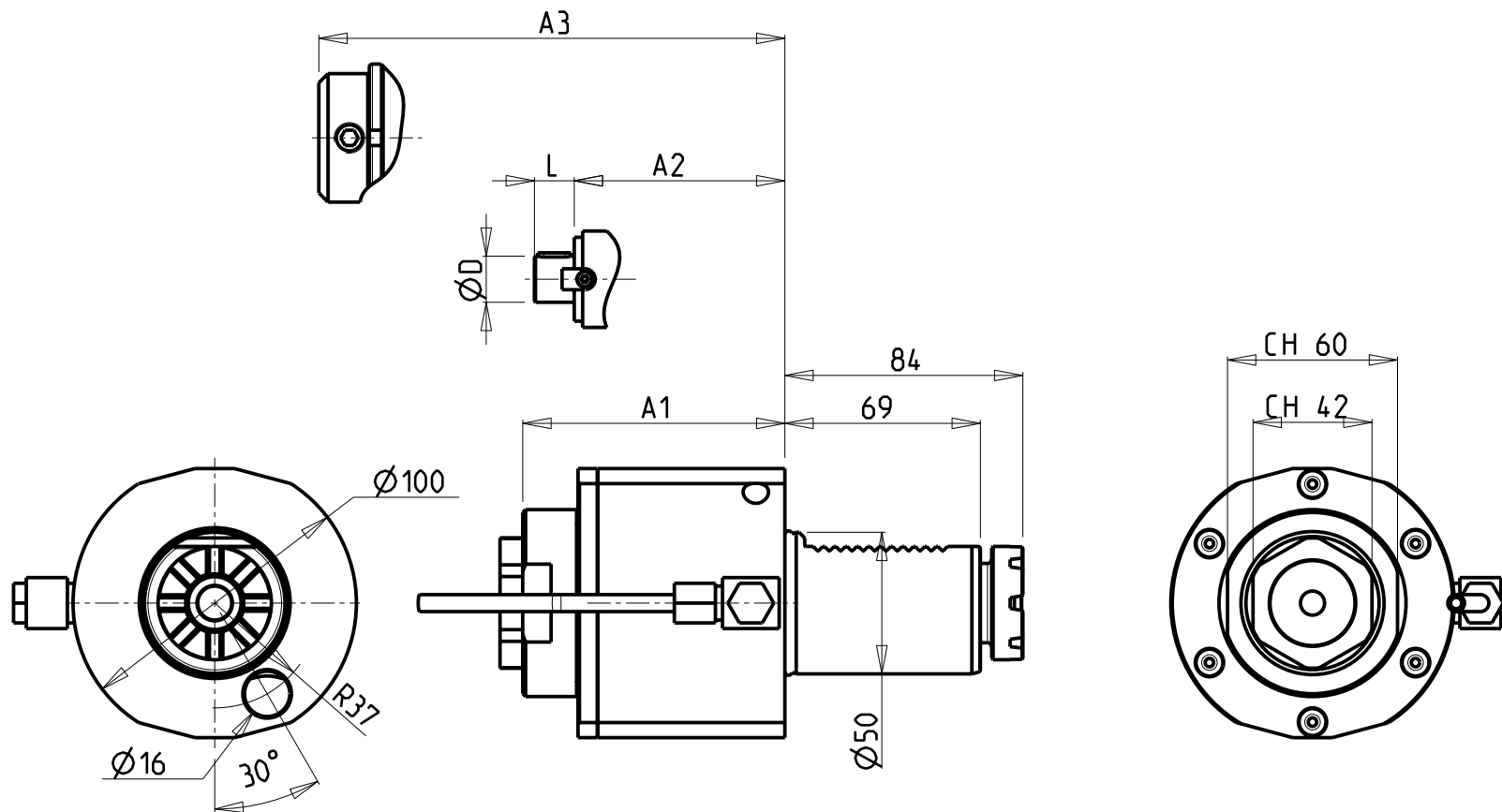
**M.T. srl**  
Via Casino Albini 480  
Tel. 0541/956034-957884  
Fax 0541/956341  
47842 S. GIOVANNI IN M. (RN)  
e-mail: mtma@mtmarchetti.com  
http://www.mtmarchetti.com

PRODUZIONE MODULI ROTANTI



PAGINA BAR125-3-00



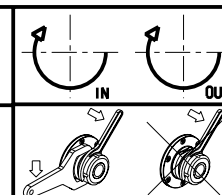


- Chiave inclusa
- Key included
- Schlüssel inbegriffen

Cod. MT	Mandrino Spindle Spindel	i	RPM	Coppia Max Max Torque Max Drehmoment	Lubrificazione int. Coolant through Innenkuehlung	Lubrificazione est. Ext. coolant Aussenkuehlung	A1	A2	A3	ØD	L	CHIAVI NON INCLUSE Keys not included Schlüssel nicht einbegriffen	
BAR0020140	ERA40	1:1	4000	100Nm		X	92.5					CHUB42	CHUB60
BAR0020240	ERA40	1:1	4000	100Nm	P=30bar	X	92.5					CHUB42	CHUB60
BAR0020522	Ø22x19	1:1	4000	100Nm		X		88.5		22	19	CHUB60	CH_VTCROCE_M08 •
BAR0020725	WELDON25	1:1	4000	100Nm	P=30bar	X			116.5			-	-

BARUFFALDI  
VDI 50

MODULO MOTORIZZATO ASSIALE VDI50  
Axial driven tool VDI50  
Axial angetriebenes Werkzeug VDI50

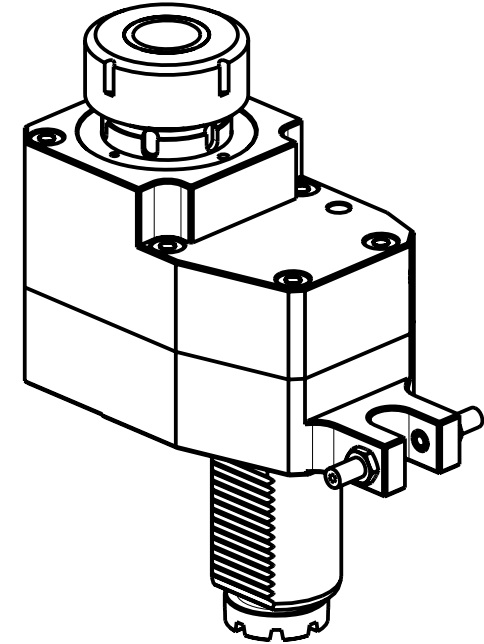
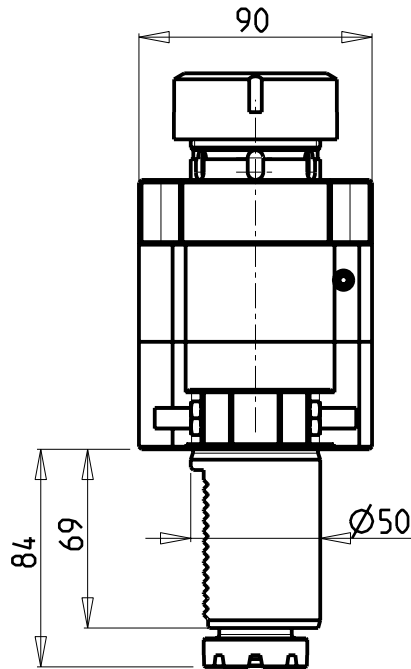
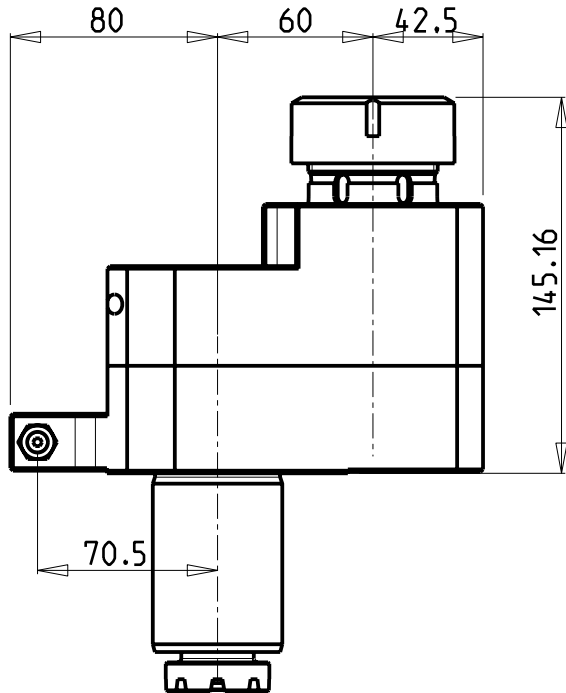
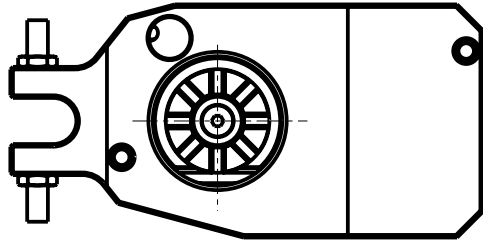


**M.T. srl**  
Via Casino Albini 480  
Tel. 0541/956034-957884  
Fax 0541/956341  
47842 S. GIOVANNI IN M. (RN)  
e-mail: mtma@mtmarchetti.com  
http://www.mtmarchetti.com

PRODUZIONE MODULI ROTANTI



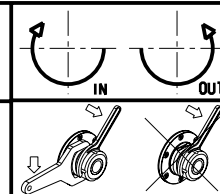
PAGINA BAR150-3-10



Cod. MT	Mandrino Spindle Spindel	I	RPM	Coppia Max Max Torque Max Drehmoment	Lubrificazione est. Ext. coolant Aussenkuehlung	CHIAVI NON INCLUSE Keys not included Schlüssel nicht einbegriffen		VDI
185BAR_A40_50C00	ER40	1:1	4000	100Nm	X	CHSTER40	CHSE5255	DESTRO - Right - Recht

BARUFFALDI  
VDI 50

MODULO MOTORIZZATO ASSIALE DISASSATO 60mm VDI50  
Axial driven tool re-directed by 60mm VDI50  
Axial angetriebenes Werkzeug achsversetzt um 60mm VDI50

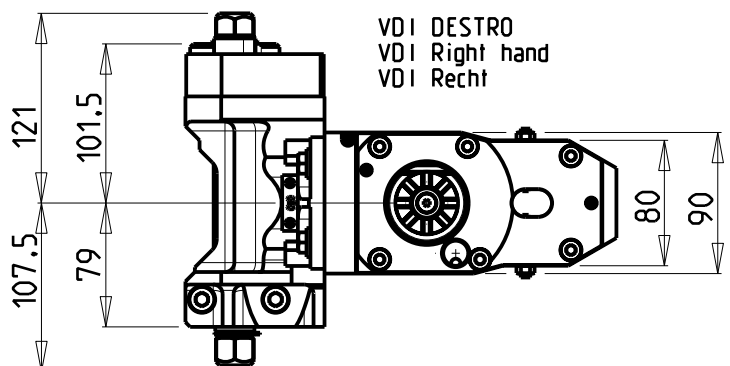


**M.T. srl**  
Via Casino Albini 480  
Tel. 0541/956034-957884  
Fax 0541/956341  
47842 S. GIOVANNI IN M. (RN)  
e-mail: mtma@mtmarchetti.com  
http://www.mtmarchetti.com

PRODUZIONE MODULI ROTANTI



PAGINA BAR160-3-00

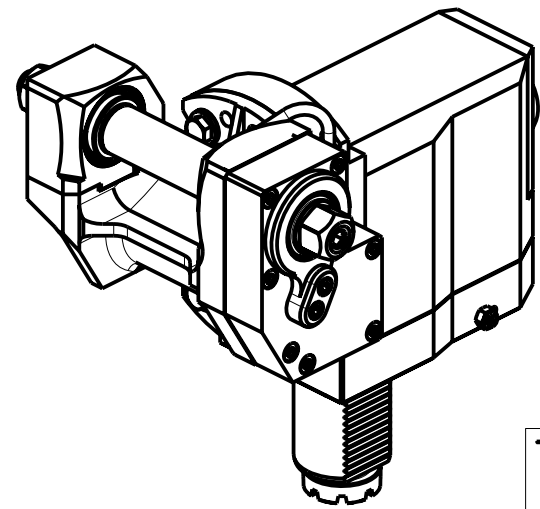
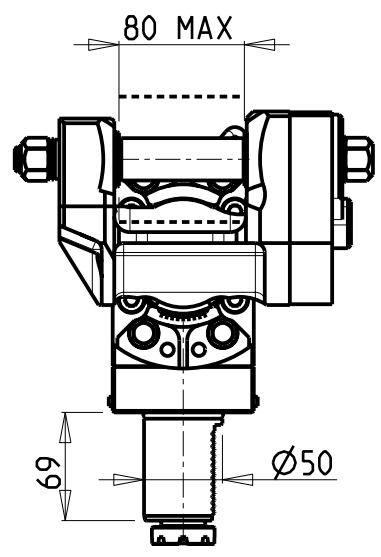
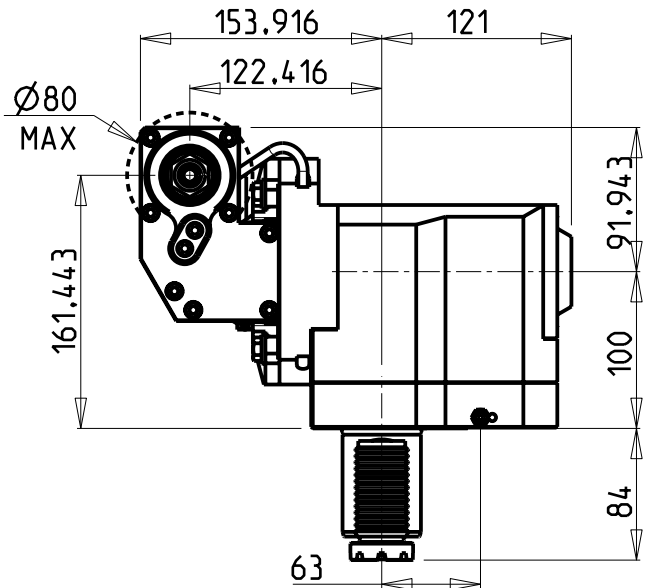


VDI DESTRO  
VDI Right hand  
VDI Recht

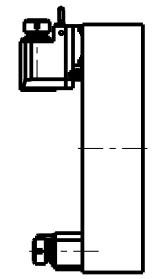
PER ALBERI E DISTANZIALI VEDI PAG. TBL250-1-00  
FOR SHAFT END SPACER SEE PAGE TBL250-1-00  
FUER DORN UND ABSTANDSSTUECK SEITE TBL250-1-00

**DOTAZIONI - SUPPLIED WITH - AUSSTATTUNG**

mm / inch	- N°1 ALBERO + DISTANZIALI - N°1 SHAFT + SPACER - N°1 DORN + ABSTANDSSTUECK
-----------	---



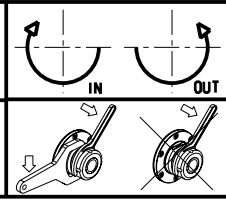
**TORRETTE ASSIALI  
AXIAL TURRETS  
AXIAL REVOLVER**




Cod. MT	I	RPM max	Coppia Max Max Torque Max Drehmoment	Lubrificazione est. Ext. coolant Aussenkuehlung	D (mm)	D (Inch)	CHIAVI INCLUDE Keys included Schluessel inbegriffen			VDI
BAR0051100	1:1	4000	60Nm	X	16-22-27-32	3/4"-1"-1 1/4"	CHUB24	CHUB13	CHESL08	DESTRO - Right - Recht
BAR0052100	2:1	2000	80Nm	X	16-22-27-32	3/4"-1"-1 1/4"	CHUB24	CHUB13	CHESL08	DESTRO - Right - Recht

BARUFFALDI  
VDI 50

MODULO MOTORIZZATO PORTACREATORE VDI50  
Driven gear hobber VDI50  
Angetriebenes Zahnradwaelzfraes-Werkzeug VDI50



**M.T. srl**  
Via Casino Albini 480  
Tel. 0541/956034-957884  
Fax 0541/956341  
47842 S. GIOVANNI IN M. (RN)  
e-mail: mtma@mtmarchetti.com  
http://www.mtmarchetti.com

PRODUZIONE MODULI ROTANTI  


PAGINA BAR340-3-00