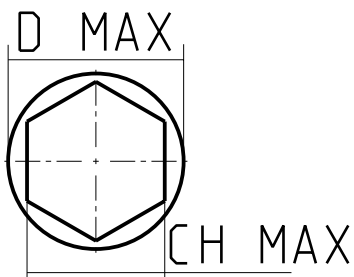


INSERTO TPGN220408
 INSERT TPGN220408
 EINLAGE TPGN220408



D MAX = 60
 CH MAX = 52

Cod. MT	N° Utensili N° Tools N° Werkzeuge
P01Z30A100	3

FRESE PER POLIGONATURA ESTERNA (3 INSERTI)
 External polygon-making mill heads (3 inserts)
 Fraese fuer externe Facettierung (3 Einlagen)

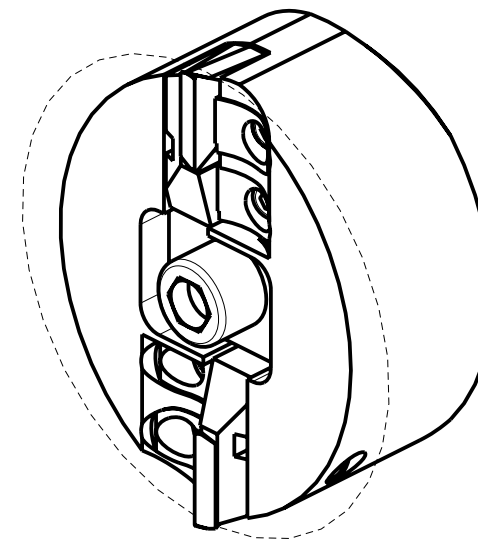
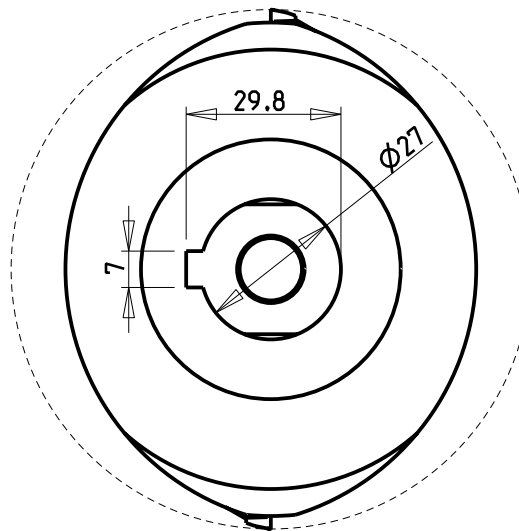
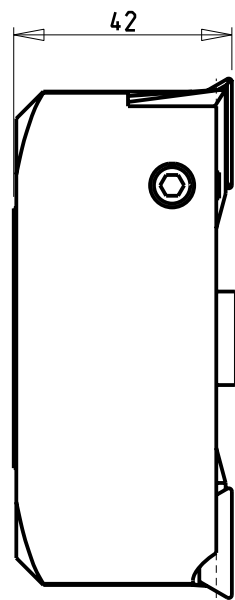
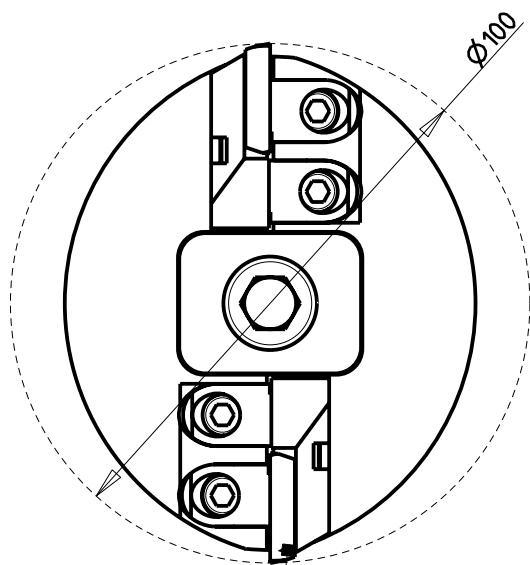
M.T. srl

Via Casino Albini 480
 Tel. 0541/956034-957884
 Fax 0541/956341
 47842 S. GIOVANNI IN M. (RN)
 e-mail: mtma@mtmarchetti.com
 http://www.mtmarchetti.com

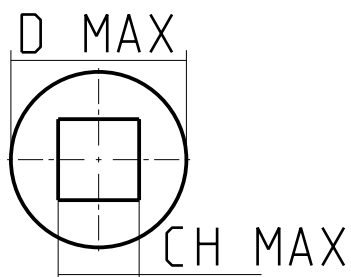
PRODUZIONE MODULI ROTANTI



PAGINA ACS050-1-00



INSERTO TPGN220408
 INSERT TPGN220408
 EINLAGE TPGN220408



D MAX = 42mm
 CH MAX = 30mm

Cod. MT	N°Utensili N°Tools N°Werkzeuge
P01Z20A100	2

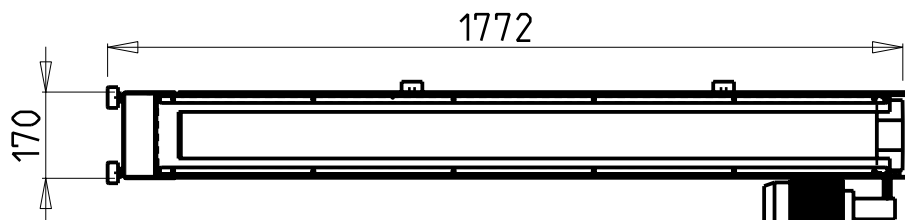
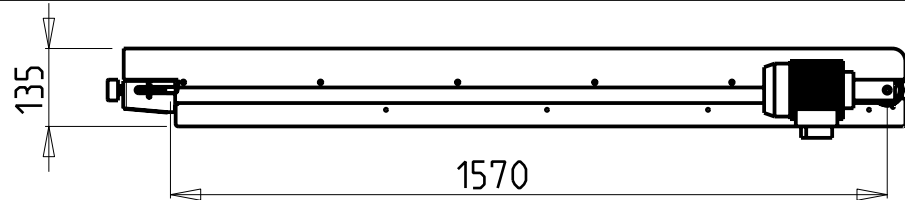
FRESE PER POLIGONATURA ESTERNA (2 INSERTI)
 External polygon-making mill heads (2 inserts)
 Fraese fuer externe Facettierung (2 Einlagen)

M.T. srl
 Via Casino Albini 480
 Tel. 0541/956034-957884
 Fax 0541/956341
 47842 S. GIOVANNI IN M. (RN)
 e-mail: mtma@mtmarchetti.com
 http://www.mtmarchetti.com

PRODUZIONE MODULI ROTANTI

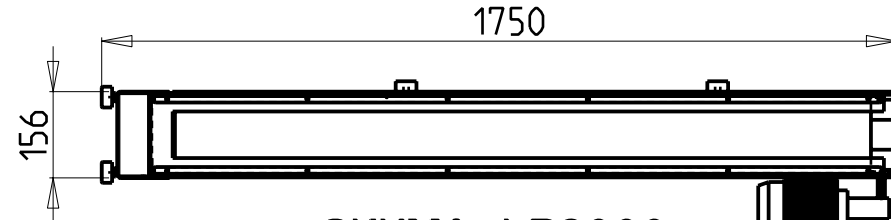
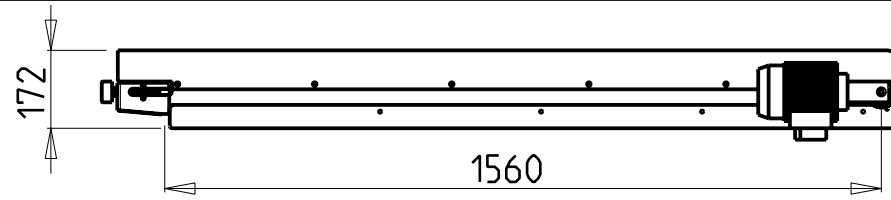


PAGINA ACS055-1-00



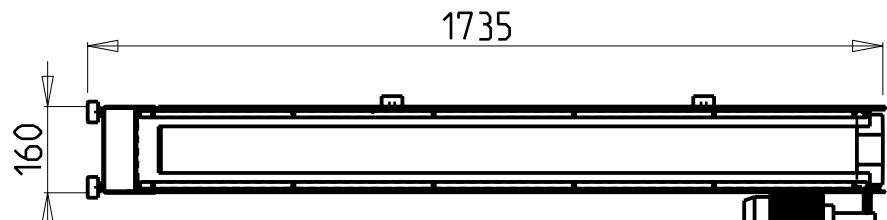
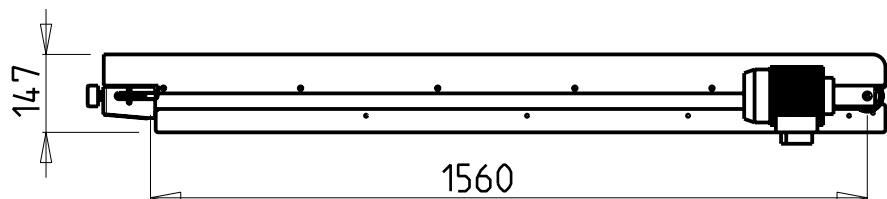
MORI SEIKI NL

Cod. MNL0321772



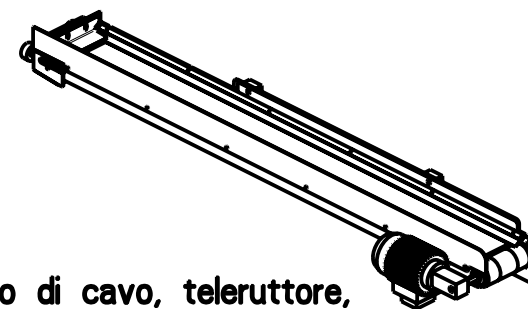
OKUMA LB3000

Cod. OKU1181750



MORI SEIKI NLX2500 SY

Cod. MNL0321773



Lamiere in acciaio inox, fornito di cavo, teleruttore, termica. Pronto per il collegamento, rapporto 1:100

In inox steel plate supplied with cable, remote control switch and thermic switch. Ready for connection, ratio 1:100

Inox Stahl Blech ausgestattet mit Kabel, Termal Feinschalter. Bereit für Anschluss, Ratio 1:100

ACCESSORI

NASTRO TRASPORTATORE SCARICO PEZZI
Part unloader conveyor belt
Transport-Förderband/Stückablader

M.T. srl

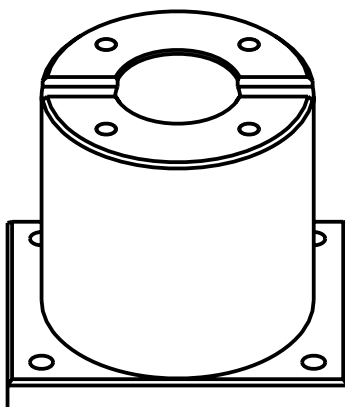
Via Casino Albini 480
Tel. 0541/956034-957884
Fax 0541/956341
47842 S. GIOVANNI IN M. (RN)
e-mail: mtma@mtmarchetti.com
<http://www.mtmarchetti.com>

PRODUZIONE MODULI ROTANTI



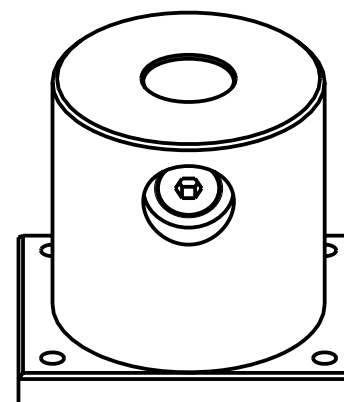
PAGINA ACS100-1-00

SM BIGLIA



TIPO type	CODICE code
BIGLIA	SM55BIGL

SM VDI



TIPO type	CODICE code
BARUFFALDI	SM40BAR
DUPLOMATIC	SM40DUP
OKUMA	SM40OKU
SAUTER	SM40SAU

ACCESSORI

ATTREZZATURA SMONTAGGIO/MONTAGGIO UTENSILI
Tool disassembling/assembling equipment
Ausruestung Demontage/Montage der Werkzeuge

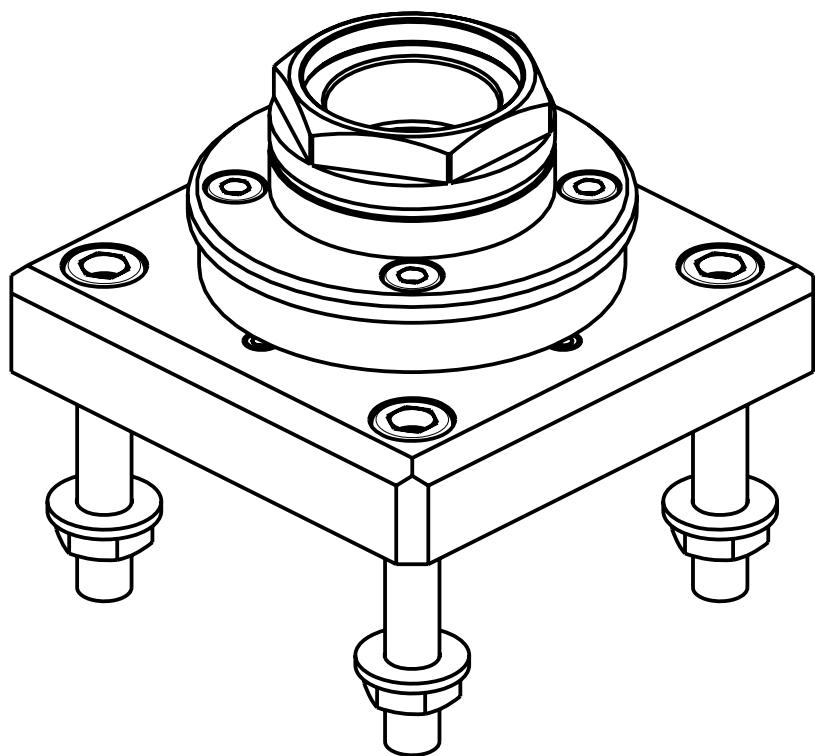
M.T. srl

Via Casino Albini 480
Tel. 0541/956034-957884
Fax 0541/956341
47842 S. GIOVANNI IN M. (RN)
e-mail: mtma@mtmarchetti.com
<http://www.mtmarchetti.com>

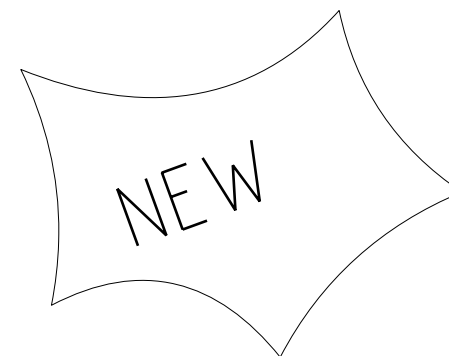
PRODUZIONE MODULI ROTANTI



PAGINA ACS150-1-00



Cod. MT	TAGLIA Size Masse
ATT_MTSK40	MTSK-40
ATT_MTSK50	MTSK-50
ATT_MTSK63	MTSK-63



ACCESSORI

ATTREZZATURA SMONTAGGIO/MONTAGGIO UTENSILI MTSK
 Tool disassembling/assembling equipment for MTSK
 Ausruestung Demontage/Montage der MTSK-Werkzeuge

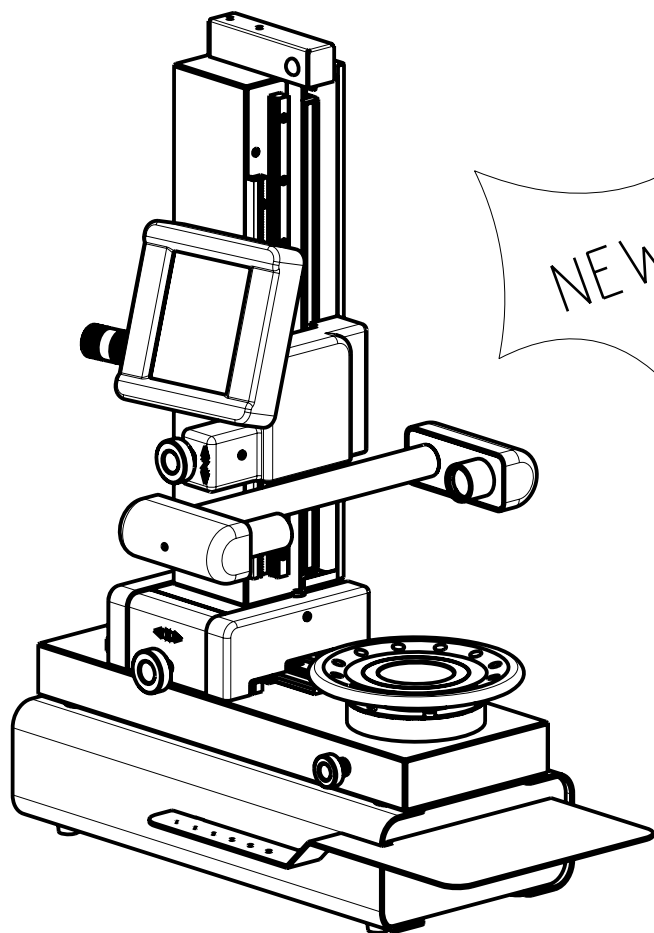
M.T. srl

Via Casino Albini 480
 Tel. 0541/956034-957884
 Fax 0541/956341
 47842 S. GIOVANNI IN M. (RN)
 e-mail: mtma@mtmarchetti.com
 http://www.mtmarchetti.com

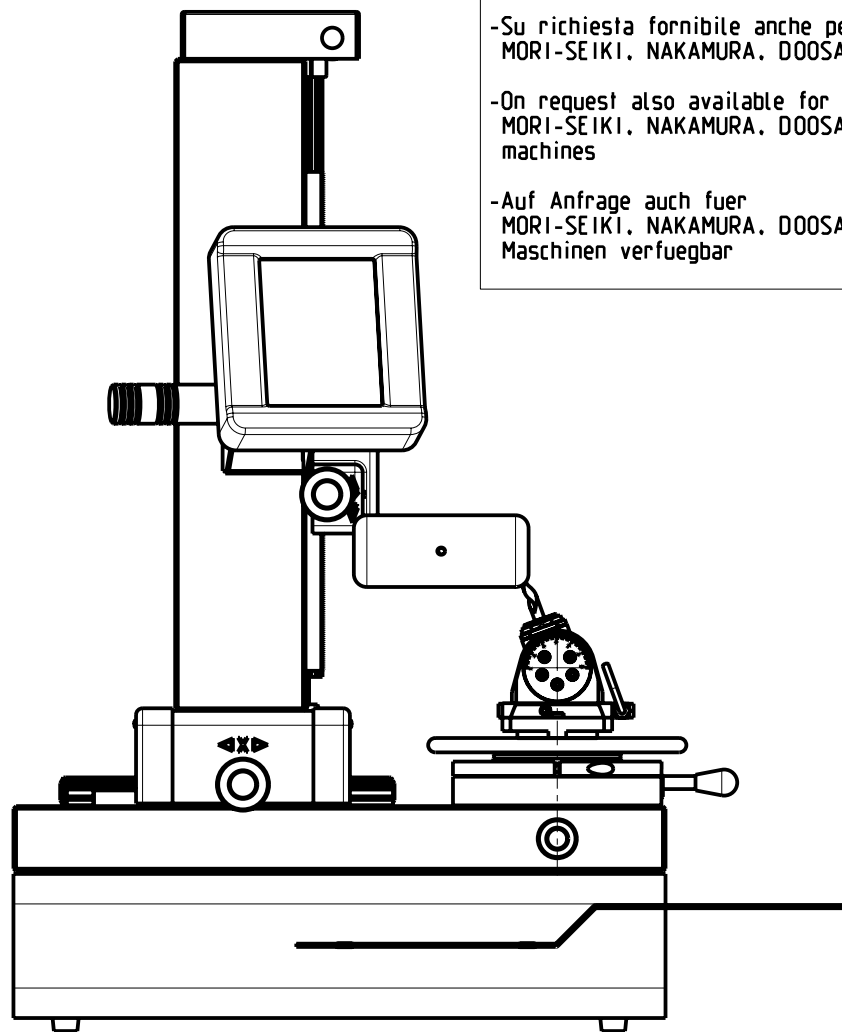
PRODUZIONE MODULI ROTANTI



PAGINA ACS155-1-00



NEW



-Su richiesta fornibile anche per macchine
MORI-SEIKI, NAKAMURA, DOOSAN, OKUMA, BIGLIA

-On request also available for
MORI-SEIKI, NAKAMURA, DOOSAN, OKUMA, BIGLIA
machines

-Auf Anfrage auch fuer
MORI-SEIKI, NAKAMURA, DOOSAN, OKUMA, BIGLIA
Maschinen verfuegbar

Cod. MT	MODELLI DI MACCHINE Machine models Maschinen Modelle
PRESET_MNZ0100	MORI-SEIKI NZ
PRESET_NKM0100	NAKAMURA SUPERMILL - CHIAH CHYUN CT2/CT3


ACCESSORI

ATTREZZATURA PER PRESETTING DI MODULI MOTORIZZATI
Driven tool presetting machine
Presetting Maschine fuer angetriebene Werkzeuge

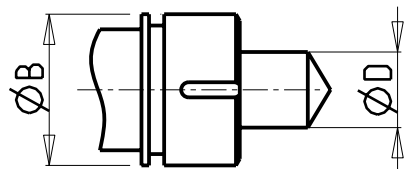


M.T. srl
Via Casino Albini 480
Tel. 0541/956034-957884
Fax 0541/956341
47842 S. GIOVANNI IN M. (RN)
e-mail: mtma@mtmarchetti.com
http://www.mtmarchetti.com

PRODUZIONE MODULI ROTANTI

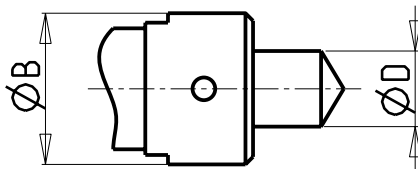


PAGINA ACS160-1-00



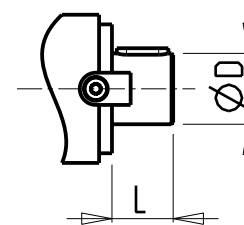
ER

Grandezza Size Grösse	Dmax.	Dmin.	B
ERM11	7	1	16
ER16	10	1	28
ERM16	10	1	22
ER20	13	1	35
ERM20	13	1	28
ER25	16	1	42
ERM25	16	1	35
ER32	20	2	50
ER40	30	3	63



WELDON

Grandezza Size Grösse	D	B
Ø8	8	28
Ø10	10	30
Ø12	12	34
Ø16	16	32
Ø20	20	42
Ø25	25	62



ALBERO PORTA FRESA

Mill. cut. holder shaft
Fräsdorn

Grandezza Size Grösse	D	L
Ø16x17	16	17
Ø22x19	22	19
Ø22x40	22	40
Ø27x21	27	21
Ø27x33	27	33
Ø27x50	27	50
Ø1" x 19	25.4	19
Ø3/4" x 3/4"	19.05	19.05

TABELLE

TABELLE DEI MANDRINI
Spindle charts
Tabelle der Spindeln

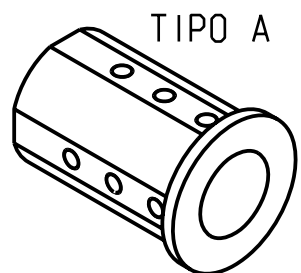
M.T. srl

Via Casino Albini 480
Tel. 0541/956034-957884
Fax 0541/956341
47842 S. GIOVANNI IN M. (RN)
e-mail: mtma@mtmarchetti.com
<http://www.mtmarchetti.com>

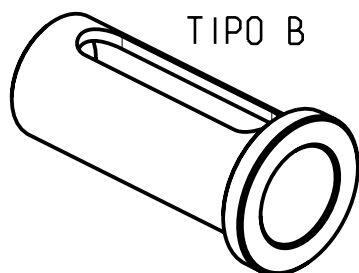
PRODUZIONE MODULI ROTANTI



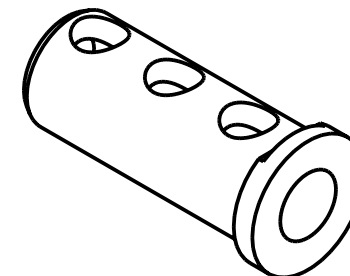
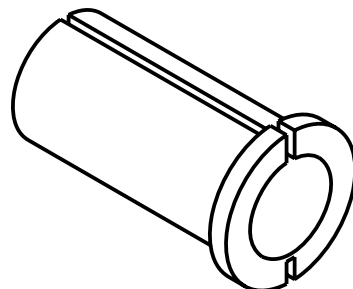
PAGINA TBL100-1-00



TIPO A



TIPO B



BOCCOLE CON GRANI
Bushings with dowel pins
Buchse mit Dubel

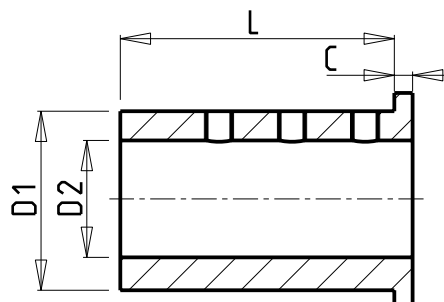
COD. MT	D1	D2	L	C	TIPO
BCL5040	50	40	85	5	B
BCL5032	50	32	85	5	A
BCL4032	40	32	75	5	B
BCL4025	40	25	75	5	A
BCL4020	40	20	75	5	A
BCL4016	40	16	75	5	A
BCL4012	40	12	75	5	A
BCL4010	40	10	75	5	A
BCL4008	40	8	75	5	A
BCL3225	32	25	65/70	5	B
BCL3220	32	20	65	5	B
BCL3216	32	16	65	5	A
BCL3212	32	12	65	5	A
BCL3210	32	10	65	5	A
BCL3208	32	8	65	5	A
BCL3206	32	6	65	5	A
BCL2520	25	20	65	5	B
BCL2516	25	16	65	5	B
BCL2512	25	12	60	5	A
BCL2510	25	10	60	5	A
BCL2508	25	8	60	5	A
BCL2506	25	6	60	5	A

BOCCOLE A DEFORMAZIONE ELASTICA
Elastic deformation bushings
Buchse mit elastischer Deformation

COD. MT	D1	D2	L	C
BCLT3225	32	25	70	4
BCLT3216	32	16	55	4
BCLT3212	32	12	55	4
BCLT3210	32	10	55	4

BOCCOLE CON FORI PASSANTI
Bushings with through-hole
Buchse mit Durchgangslocher

COD. MT	D1	D2	L	C
0440005	20	16	48	4
0440004	20	12	48	4
0440003	20	10	48	4
0440002	20	8	48	4
0440001	20	6	48	4
0440024	3/4"	1/2"	48	4
0440023	3/4"	3/8"	48	4
0440021	3/4"	1/4"	48	4



LE BOCCOLE VENGONO FORNITE SU RICHIESTA A CORREDO DEL PORTAUTENSILE
Bushings can be supplied with toolholder orders on request
Die Buchsen werden auf Anfrage, zusätzlich geliefert

TABELLE

TABELLE BOCCOLE DI RIDUZIONE
Bushing charts
Reduzierbuchsen -Tabelle

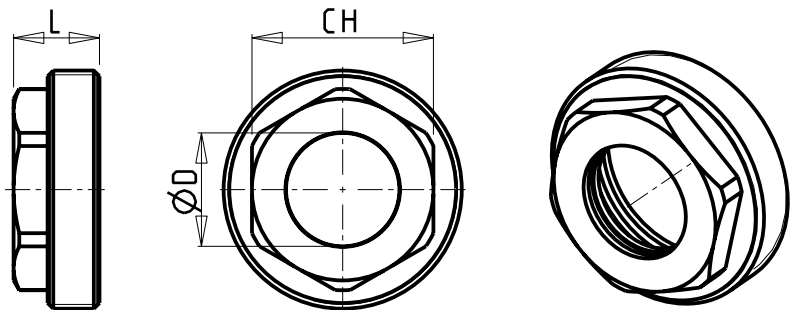
M.T. srl

Via Casino Albini 480
Tel. 0541/956034-957884
Fax 0541/956341
47842 S. GIOVANNI IN M. (RN)
e-mail: mtma@mtmarchetti.com
http://www.mtmarchetti.com

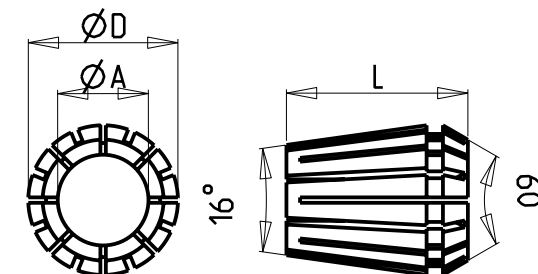
PRODUZIONE MODULI ROTANTI



PAGINA TBL150-1-00



PINZE ERG-DIN 6499/B				
DIN 6499-B ERG COLLETS				
TIPO type	A	D	L	ESPANSIONE expansion
ERG-11	1-7	11.5	18.0	mm 0.5
ERG-16	1-3 4-10	17.0	27.5	mm 0.5 mm 1.0
ERG-20	1-3 4-13	21.0	31.5	mm 0.5 mm 1.0
ERG-25	1-3 4-16	26.0	34.0	mm 0.5 mm 1.0
ERG-32	2-20	33.0	40.0	mm 1.0
ERG-40	3-30	41.0	46.0	mm 1.0
ERG-50	6-34	52.0	60.0	mm 2.0

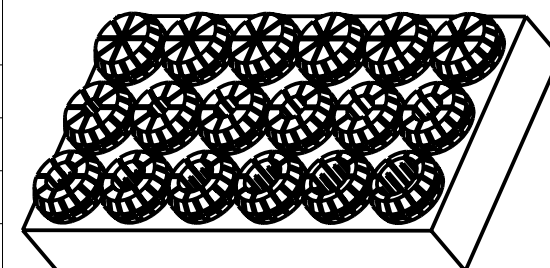


SERIE DI GHIERE ERA REFRIGERAZIONE INTERNA PER PINZE DIN 6499/B
COOLANT TROUGH ERA CLAMPING-NUTS SET FOR DIN 6499/B COLLETS

CODICE KIT	TIPO type	ØD	L	CH	n° GHIERE n° clamping-nuts
KITGHTA2000E	ERA-20	6-8-10-12	13.1	22	4
KITGHTA2500E	ERA-25	6-8-10-12-16	14.0	27	5
KITGHTA3200E	ERA-32	6-8-10-12-16-20	15.15	32	6
KITGHTA4000E	ERA-40	8-10-12-16-20	16.1	42	5
KITGHTA5000E	ERA-50	8-10-12-16-20	27.4	50	5

SERIE DI PINZE ERG-DIN 6499/B
DIN-6499/B ERG COLLETS SET

CODICE KIT	TIPO type	CAPACITA' capacity	n° PINZE n° collets
KITPINZEER11	ERG-11	da Ø1 a Ø7	13
KITPINZEER16	ERG-16	da Ø1 a Ø10	10
KITPINZEER20	ERG-20	da Ø2 a Ø13	12
KITPINZEER25	ERG-25	da Ø2 a Ø16	15
KITPINZEER32	ERG-32	da Ø3 a Ø20	18
KITPINZEER40	ERG-40	da Ø4 a Ø26	23



TABELLE

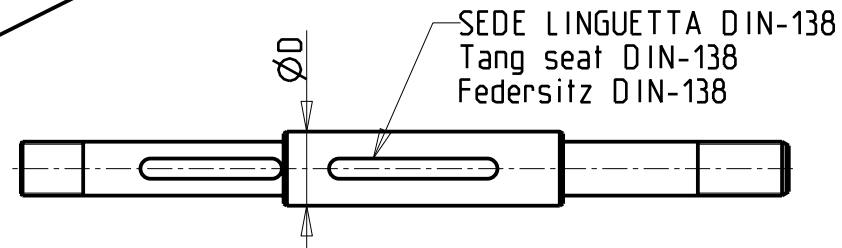
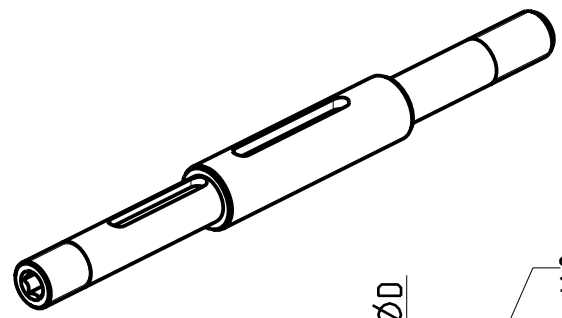
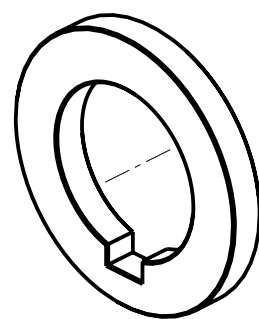
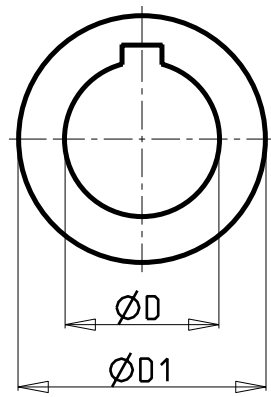
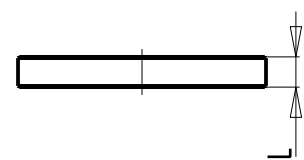
PINZE ERG-DIN 6499/B
 DIN 6499/B ERG Collets
 DIN 6499/B ERG Collets

M.T. srl
 Via Casino Albini 480
 Tel. 0541/956034-957884
 Fax 0541/956341
 47842 S. GIOVANNI IN M. (RN)
 e-mail: mtma@mtmarchetti.com
 http://www.mtmarchetti.com

PRODUZIONE MODULI ROTANTI

PAGINA TBL200-1-00

COD. MT	D	D1	L
DIST_D16_L2	16	27	2
DIST_D16_L5	16	27	5
DIST_D16_L10	16	27	10
DIST_D16_L20	16	27	20
DIST_D22_L2	22	34	2
DIST_D22_L5	22	34	5
DIST_D22_L10	22	34	10
DIST_D22_L20	22	34	20
DIST_D27_L2	27	41	2
DIST_D27_L5	27	41	5
DIST_D27_L10	27	41	10
DIST_D27_L20	27	41	20
DIST_D32_L2	32	47	2
DIST_D32_L3	32	47	3
DIST_D32_L5	32	47	5
DIST_D32_L10	32	47	10
DIST_D1905_L2	3/4"	34	2
DIST_D1905_L5	3/4"	34	5
DIST_D1905_L10	3/4"	34	10
DIST_D1905_L20	3/4"	34	20
DIST_D2540_L2	1"	41	2
DIST_D2540_L5	1"	41	5
DIST_D2540_L10	1"	41	10
DIST_D2540_L20	1"	41	20
DIST_D3175_L2	1-1/4"	47	2
DIST_D3175_L5	1-1/4"	47	5
DIST_D3175_L10	1-1/4"	47	10
DIST_D3175_L20	1-1/4"	47	20



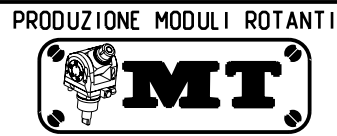
PORTACREATORE STANDARD Driven gear hobber Zahnradwaelzfraes-Werkzeug	
COD. MT	D
0100106	16
0100105	22
0100104	27
0100107	32
0100108	3/4"
0100109	1"
0100110	1 1/4"

PORTACREATORE MAGGIORATO Reinforced driven gear hobber Vergrößerter Zahnradwaelzfraes-Werkzeug	
COD. MT	D
MNL0410030	16
MNL0410004	22
MNL0410005	27
MNL0410006	32
MNL0410031	3/4"
MNL0410027	1"
MNL0410032	1 1/4"

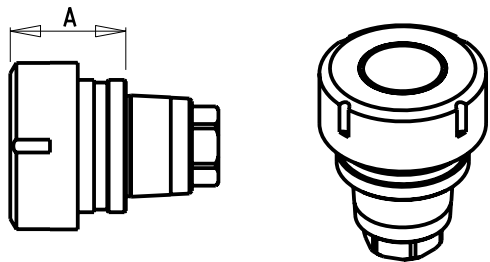
TABELLE

TABELLE DISTANZIALI E ALBERI PER PORTACREATORE
Shaft and spacer for driven gear hobber charts
Dorne und Abstandsstuecke Tabelle fuer Zahnradwaelzfraeser

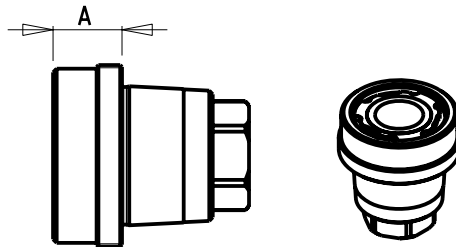
M.T. srl
Via Casino Albini 480
Tel. 0541/956034-957884
Fax 0541/956341
47842 S. GIOVANNI IN M. (RN)
e-mail: mtma@mtmarchetti.com
http://www.mtmarchetti.com



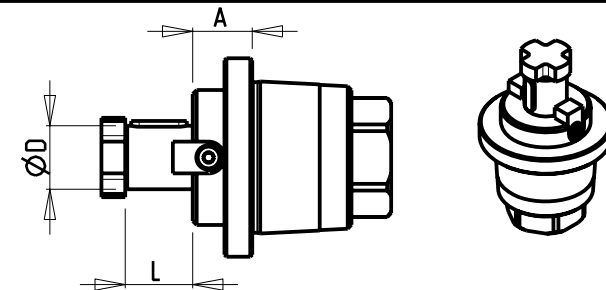
PAGINA TBL250-1-00



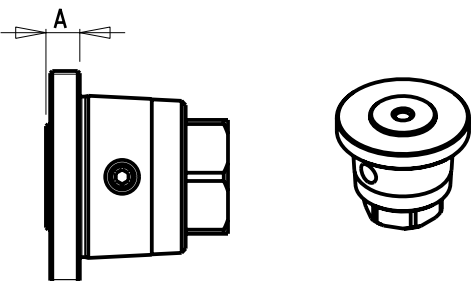
Cod. MT	Mandrino Spindle Spindel	A
MTSK40A02	ER32	35.6
MTSK40A03	ER25	32.6



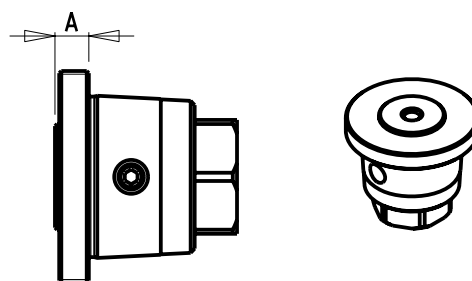
Cod. MT	Mandrino Spindle Spindel	A
MTSK40B02	ERA25	16
MTSK40B03	ERA20	14



Cod. MT	Mandrino Spindle Spindel	Misure Dimensions Masse	A	D	L
MTSK40C02	Ø16x17	mm	15	16	17
MTSK40C03	Ø3/4"x3/4"	Inch	15.5	3/4"	3/4"
MTSK40C04	Ø22x19	mm	17	22	19
MTSK40C05	Ø27x21	mm	22	27	21



Cod. MT	Mandrino Spindle Spindel	A
MTSK40D01	WELDON 6	8
MTSK40D02	WELDON 8	8
MTSK40D03	WELDON 10	9
MTSK40D04	WELDON 12	14
MTSK40D06	WELDON 16	39.5
MTSK40D07	WELDON 20	39.5



Cod. MT	Mandrino Spindle Spindel	A
MTSK40D11	WELDON 1/4"	8
MTSK40D12	WELDON 5/16"	8
MTSK40D13	WELDON 3/8"	9
MTSK40D14	WELDON 1/2"	14

TABELLE

TABELLE PORTAUTENSILI MODULARI MTSK-40
 MTSK-40 quick change toolholders clampings chart
 MTSK-40 modulare Werkzeugaufnahmen tabelle

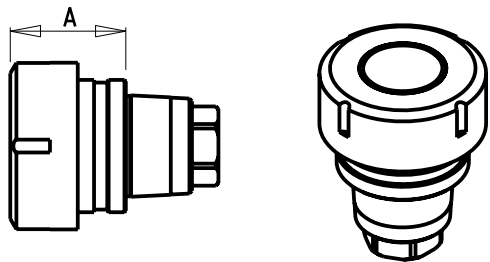
M.T. srl

Via Casino Albini 480
 Tel. 0541/956034-957884
 Fax 0541/956341
 47842 S. GIOVANNI IN M. (RN)
 e-mail: mtma@mtmarchetti.com
 http://www.mtmarchetti.com

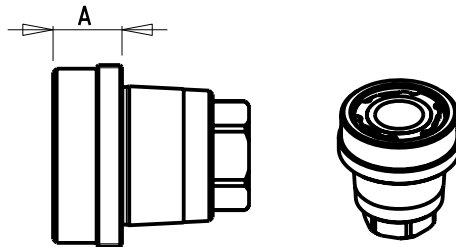
PRODUZIONE MODULI ROTANTI



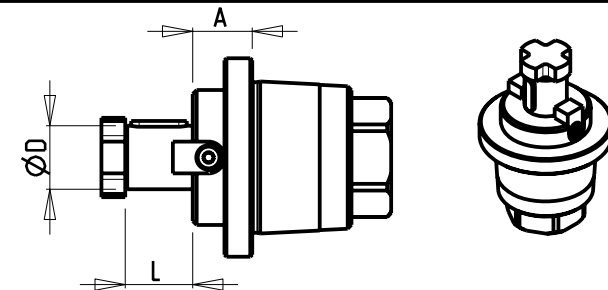
PAGINA TBL300-1-40



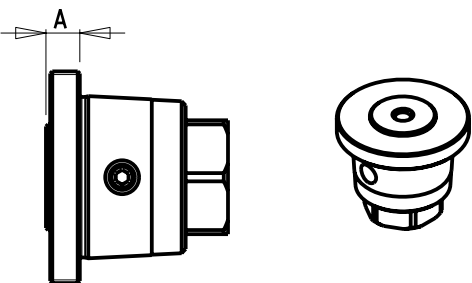
Cod. MT	Mandrino Spindle Spindel	A
MTSK50A01	ER40	46.6
MTSK50A02	ER32	35.6
MTSK50A03	ER25	32.6



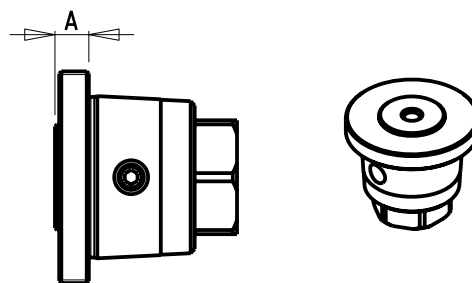
Cod. MT	Mandrino Spindle Spindel	A
MTSK50B01	ERA32	19
MTSK50B02	ERA25	14
MTSK50B03	ERA20	9



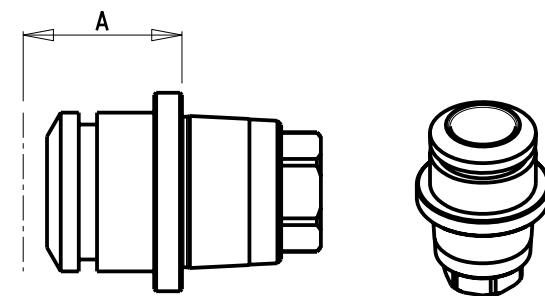
Cod. MT	Mandrino Spindle Spindel	Misure Dimensions Masse	A	D	L
MTSK50C02	Ø16x17	mm	15	16	17
MTSK50C03	Ø3/4"x3/4"	Inch	15.5	3/4"	3/4"
MTSK50C04	Ø22x19	mm	17	22	19
MTSK50C05	Ø1"x3/4"	Inch	19	1"	3/4"
MTSK50C06	Ø27x21	mm	19	27	21



Cod. MT	Mandrino Spindle Spindel	A
MTSK50D01	WELDON 6	8
MTSK50D02	WELDON 8	8
MTSK50D03	WELDON 10	8
MTSK50D04	WELDON 12	9
MTSK50D05	WELDON 16	12



Cod. MT	Mandrino Spindle Spindel	A
MTSK50D11	WELDON 1/4"	8
MTSK50D12	WELDON 5/16"	8
MTSK50D13	WELDON 3/8"	8
MTSK50D14	WELDON 1/2"	9
MTSK50D15	WELDON 5/8"	12



Cod. MT	Mandrino Spindle Spindel	A
MTSK50E01	POW RGRIP® PG25	40

TABELLE

TABELLE PORTAUTENSILI MODULARI MTSK-50
 MTSK-50 quick change toolholders clampings chart
 MTSK-50 modulare Werkzeugaufnahmen tabelle

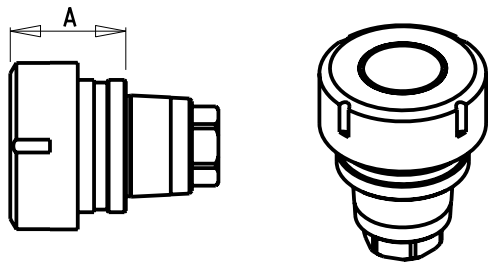
M.T. srl

Via Casino Albini 480
 Tel. 0541/956034-957884
 Fax 0541/956341
 47842 S. GIOVANNI IN M. (RN)
 e-mail: mtma@mtmarchetti.com
 http://www.mtmarchetti.com

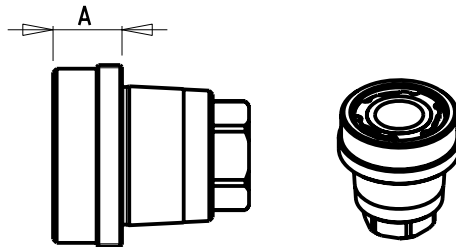
PRODUZIONE MODULI ROTANTI



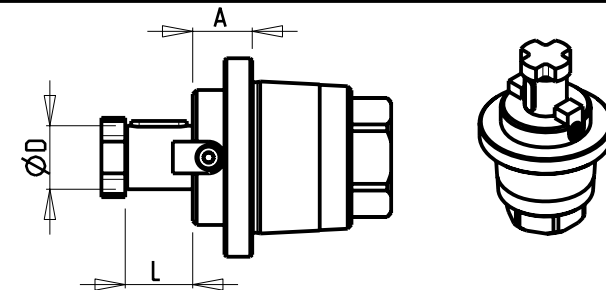
PAGINA TBL300-1-50



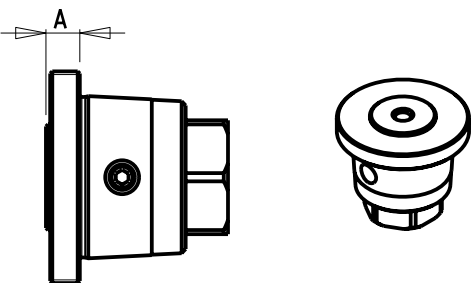
Cod. MT	Mandrino Spindle Spindel	A
MTSK63A01	ER50	53.9
MTSK63A02	ER40	39.6
MTSK63A03	ER32	36.6
MTSK63A04	ER25	33.6



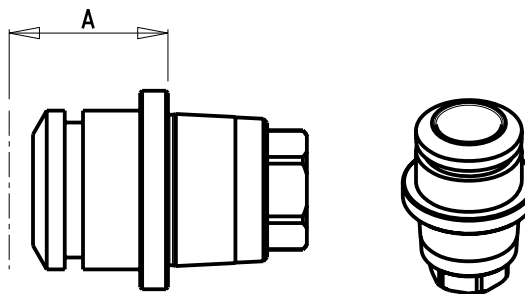
Cod. MT	Mandrino Spindle Spindel	A
MTSK63B01	ERA40	20
MTSK63B02	ERA32	18
MTSK63B03	ERA25	10



Cod. MT	Mandrino Spindle Spindel	Misure Dimensions Masse	A	D	L
MTSK63C02	Ø16x17	mm	16	16	17
MTSK63C03	Ø3/4"x3/4"	Inch	16.5	3/4"	3/4"
MTSK63C04	Ø22x19	mm	18	22	19
MTSK63C05	Ø1"x3/4"	Inch	20	1"	3/4"
MTSK63C06	Ø27x21	mm	20	27	21



Cod. MT	Mandrino Spindle Spindel	A
MTSK63D01	WELDON 6	9
MTSK63D02	WELDON 8	9
MTSK63D03	WELDON 10	9
MTSK63D04	WELDON 12	10
MTSK63D05	WELDON 16	12
MTSK63D06	WELDON 20	14



Cod. MT	Mandrino Spindle Spindel	A
MTSK63E01	POW RGRIP® PG32	53

TABELLE

TABELLE PORTAUTENSILI MODULARI MTSK-63
 MTSK-63 quick change toolholders clampings chart
 MTSK-63 modulare Werkzeugaufnahmen tabelle

M.T. srl

Via Casino Albini 480
 Tel. 0541/956034-957884
 Fax 0541/956341
 47842 S. GIOVANNI IN M. (RN)
 e-mail: mtma@mtmarchetti.com
 http://www.mtmarchetti.com

PRODUZIONE MODULI ROTANTI



PAGINA TBL300-1-63

POWRGRIP® PG25

COD. MT	D (mm)	D (inch)	D (inch)
PG2503000	3	0.1181	-
PG2503181	3.175	0.1250	1/8"
PG2504000	4	0.1575	-
PG2504761	4.763	0.1875	3/16"
PG2505000	5	0.1969	-
PG2506000	6	0.2362	-
PG2506351	6.350	0.2500	1/4"
PG2507000	7	0.2756	-
PG2507941	7.938	0.3125	5/16"
PG2508000	8	0.3150	-
PG2509000	9	0.3543	-
PG2509521	9.525	0.3750	3/8"
PG2510000	10	0.3937	-
PG2511000	11	0.4331	-
PG2511111	11.113	0.4375	7/16"
PG2512000	12	0.4724	-
PG2512701	12.7	0.5000	1/2"
PG2514000	14	0.5512	-
PG2514291	14.288	0.5625	9/16"
PG2515881	15.875	0.6250	5/8"
PG2516000	16	0.6300	-
PG2518000	18	0.7087	-
PG2519051	19.050	0.7500	3/4"
PG2520000	20	0.7874	-

POWRGRIP® PG32

COD. MT	D (mm)	D (inch)	D (inch)
PG3206000	6	0.2362	-
PG3206351	6.350	0.2500	1/4"
PG3207000	7	0.2756	-
PG3207941	7.938	0.3125	5/16"
PG3208000	8	0.3150	-
PG3209000	9	0.3543	-
PG3209521	9.525	0.3750	3/8"
PG3210000	10	0.3937	-
PG3211000	11	0.4331	-
PG3211111	11.113	0.4375	7/16"
PG3212000	12	0.4724	-
PG3212701	12.7	0.5000	1/2"
PG3214000	14	0.5512	-
PG3214291	14.288	0.5625	9/16"
PG3215881	15.875	0.6250	5/8"
PG3216000	16	0.6300	-
PG3218000	18	0.7087	-
PG3219051	19.050	0.7500	3/4"
PG3220000	20	0.7874	-
PG3222000	22	0.8661	-
PG3222231	22.225	0.8750	7/8"
PG3225000	25	0.9843	-
PG3225401	25.400	1	1"

TABELLE

TABELLE PINZE POWRGRIP®
PowRgrip® collets charts
PowRgrip® Spannzangen Tabelle

M.T. srl

Via Casino Albini 480
Tel. 0541/956034-957884
Fax 0541/956341
47842 S. GIOVANNI IN M. (RN)
e-mail: mtma@mtmarchetti.com
http://www.mtmarchetti.com

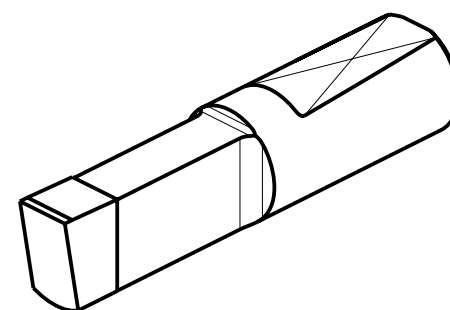
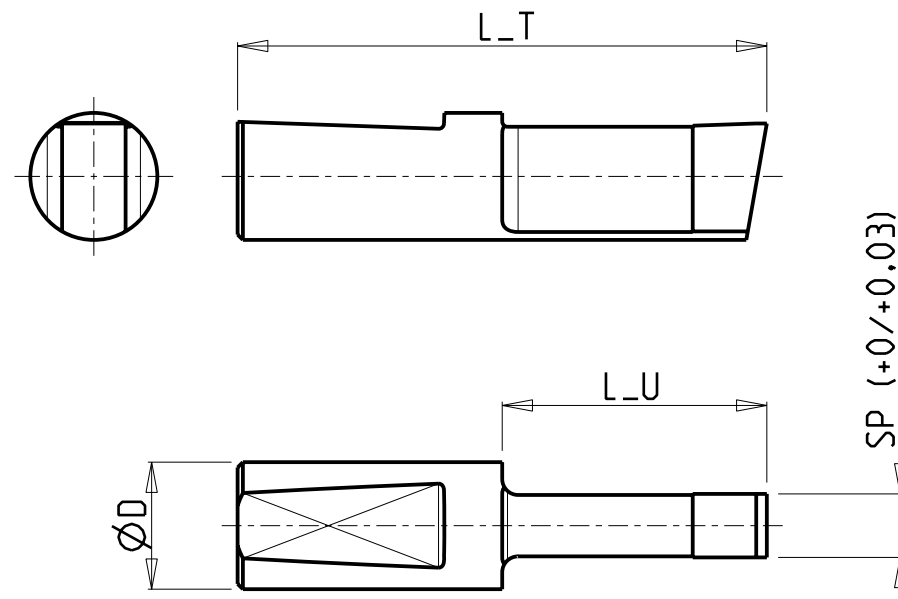
PRODUZIONE MODULI ROTANTI



PAGINA TBL350-1-00

COD. MT	D (mm)	SP (mm)	L_U (mm)	L_T (mm)
MNL0651001	12.000	4.000	20.000	45.000
MNL0651002	12.000	5.000	25.000	50.000
MNL0651003	12.000	6.000	25.000	50.000
MNL0651004	12.000	6.000	35.000	60.000
MNL0651005	12.000	6.000	50.000	75.000
MNL0651006	16.000	8.000	25.000	50.000
MNL0651007	16.000	10.000	30.000	55.000
MNL0651008	16.000	12.000	30.000	55.000
MNL0651009	12.000	3.000	25.000	50.000
MNL0651010	16.000	8.000	50.000	75.000

COD. MT	D (mm)	SP (inch)	L_U (mm)	L_T (mm)
MNL0652001	12.000	1/8"	20.000	45.000
MNL0652002	12.000	3/16"	25.000	50.000
MNL0652003	12.000	1/4"	25.000	50.000
MNL0652004	16.000	5/16"	25.000	50.000
MNL0652005	16.000	3/8"	30.000	55.000
MNL0652006	16.000	1/2"	30.000	55.000



TABELLE

TABELLE UTENSILI PER STOZZATORE
Driven slotting tool cutting-tools charts
Nutentfoss-Werkzeug schneidewerkzeuge -Tabelle

M.T. srl

Via Casino Albini 480
Tel. 0541/956034-957884
Fax 0541/956341
47842 S. GIOVANNI IN M. (RN)
e-mail: mtma@mtmarchetti.com
http://www.mtmarchetti.com

PRODUZIONE MODULI ROTANTI



PAGINA TBL400-1-00